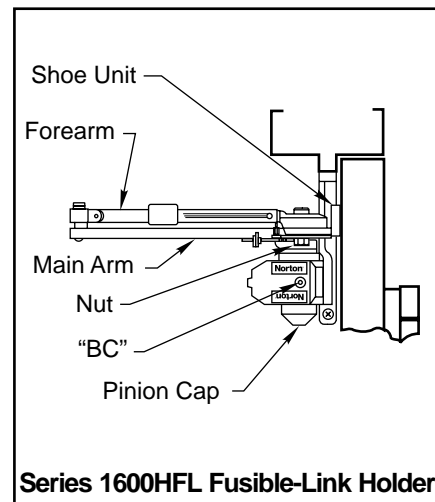
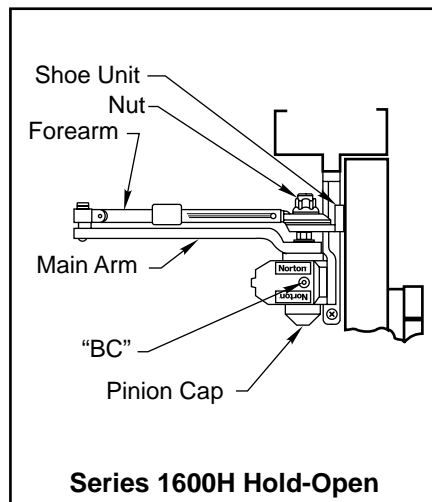
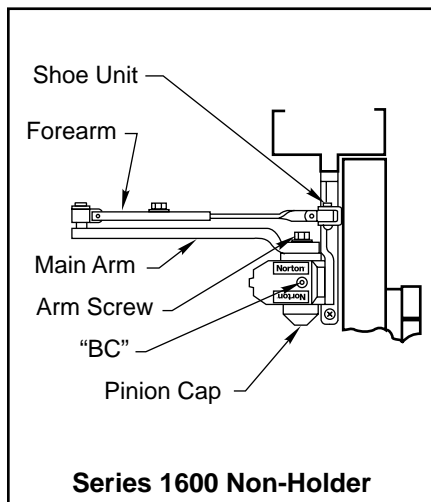


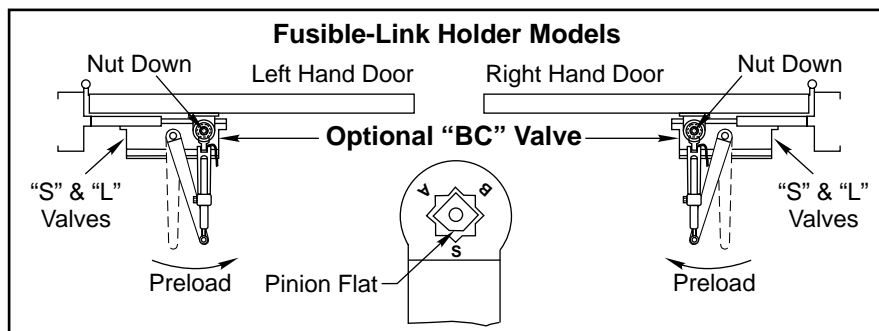
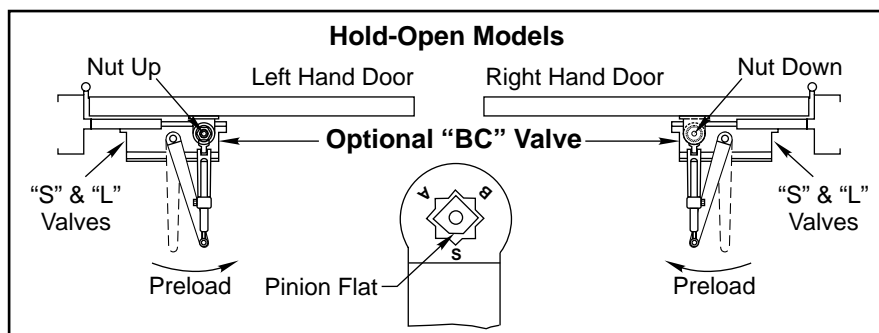
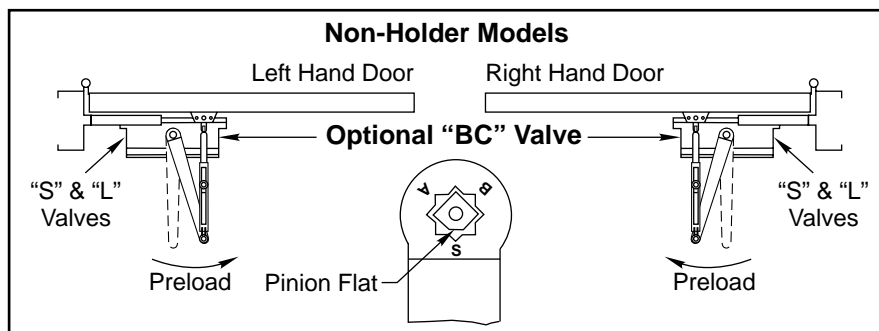
Installation Instructions

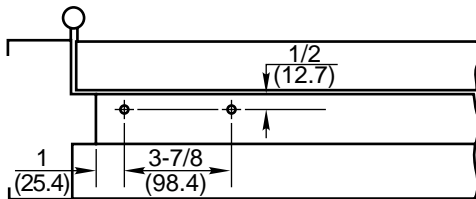
80-9316-0507-020 (7-01)

Corner Bracket Installation for Door Closers

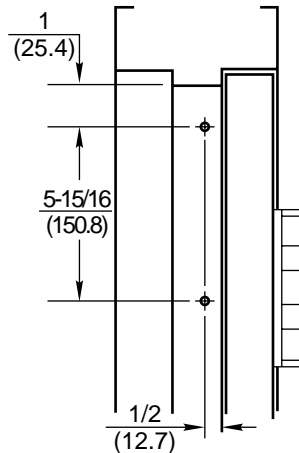
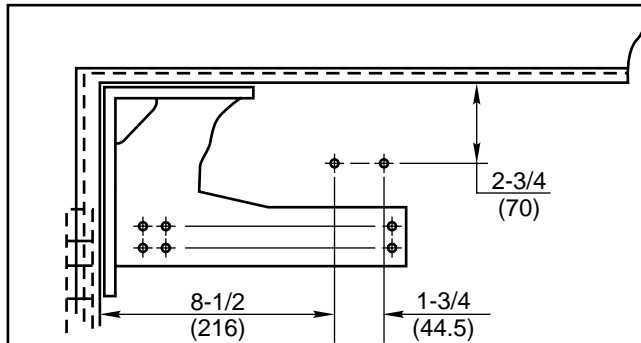


- **Prepare door and frame.** See *template on back page*. Using template dimensions mark 4 holes on frame for corner bracket (2 on jamb and 2 on header) and 2 holes on door for closer arm. Prepare holes as shown on "Fasteners Chart".
- **Mount corner bracket to frame.**
- **Mount closer to bracket.** Place end with two regulating valves toward hinge edge of door.
- **Install arm on pinion top.** Separate shoe unit at rod adjusting point in forearm. Align pinion flat with letter "S" on arm. Fasten with arm screw.
- **Mount shoe unit to door.**
Hold-Open Models
 RH Door: Nut Down
 LH Door: Nut Up
Fusible-Link-Holder Models
 Nut Down
- **Assemble Arm.** Adjust forearm perpendicular to door. Tighten set screw.
- **Snap pinion cap in place.**
- **Adjust closer.** See *back page*.





- Do not scale drawing.
- Left hand door shown.
- Dimensions are in inches (mm).



Fasteners Chart			
	Fasteners	Door or Frame	Drill-Sizes
Standard	#14 type "A" sheet metal screw	Wood	7/32" (5.56 mm.)
	1/4" - 20 machine screw	Metal	drill: #7 (0.201" dia.) Or 5.10mm tap: 1/4" - 20
Optional	Sex nuts and bolts	Hollow-Metal	9/32" (7.00 mm.) through; 3/8" (9.50 mm.) Door face opposite to closer
		Aluminum or Wood	3/8" (9.50 mm.) through
	Through-bolts and grommet-nuts	All	9/32" (7.00 mm.) through; 3/8" (9.50 mm.) dia. x 3/8" (9.50 mm.) deep on door face opposite to closer

Adjustment Instructions

- **Closing Power Adjustment** permitted in non-holder models by *Adjusta-Power*® shoe. Reposition shoe stud and screw ...
1. Toward hinge to increase power.
2. Away from hinge to decrease power.
- **Closing Speed** controlled by valve marked "S" (sweep range) and by valve marked "L" (latch range).
- **Backcheck Option** controlled by valve marked "BC".
- **Delayed Action Option** (TO SPECIAL ORDER ONLY). Separate closer adjustment instructions are supplied with Delayed Action closers.
- **Hold-Open Option** (90° to 180°). To set ... Open door to desired position and adjust holder nut tight.

