

Chicago August 2016

# FLASHship<sup>TM</sup>

Speeding to  
Success:  
**A TALK WITH  
VICKI NEWMAN**

---

Hugo Hotel  
Features  
**ROCKWOOD  
PULLS**

---

**FLASHship**  
Product Catalog

---

The ASSA ABLOY FLASHship<sup>TM</sup>  
Program includes products  
from leading brands:

MARKAR  
McKINNEY  
PEMKO  
RIXSON  
ROCKWOOD  
YALE

**ASSA ABLOY**

The global leader in  
door opening solutions





Copyright © 2011 ASSA ABLOY Inc. All rights reserved.

## Accessories Make a Difference

**ASSA ABLOY**

Selecting the right high quality accessories for your door openings really matters!

Pemko, Rockwood and McKinney products save energy, control light and sound transmission, decrease air leakage and prevent bacterial transfer. This helps save lives, save money, and improve the quality of life.

For more information contact your local ASSA ABLOY Door Security Solutions representative at [www.assaabloydss.com](http://www.assaabloydss.com), click on Sales Support or scan the code below.



**McKinney**

**PEMKO**

**ROCKWOOD®**

The global leader in  
door opening solutions

04

**FLASHship™**

General Information  
Finishes  
Terms & Conditions

---

11

**Yale®**

Product Comparison  
Charts  
Mortise Locks &  
Cylinders  
Cylindrical Locks  
Cylindrical Deadbolts  
Exit Devices  
Exit Device Trim,  
Mullions & Cylinders  
Door Closers  
Touchscreen Locks

30

**McKinney®**

Spring Hinges  
3 & 5 Knuckle Hinges  
MacPro® & ElectroLynx®  
Hinges

---

34

**Markar/Pemko**

Markar Stainless Steel Pin &  
Barrel Continuous Hinges  
Thresholds  
Door Shoes, Jamb Sets,  
Sweeps & Astragals  
Rain Drips, Automatic Door  
Bottoms & Aluminum  
Geared Continuous Hinges  
Adhesive Gaskets  
Lite Kits

43

**Rockwood®**

Push & Pull Plates  
Door Pulls, Lock  
Protectors & Door Stops  
Flush Bolts, Dust Proof  
Strikes, Surface Bolts,  
Roller Latches, Door  
Guards  
Silencers, Knockers,  
Coat Hooks, Misc. Pulls,  
Coordinators & Flush Bolts

51

**Rixson®**

Pivot Sets &  
Intermediate Pivots  
Checkmate® Stops &  
Holders  
Electromagnetic Door  
Holder/Releases

---

54

**Order Forms**



# FLASHship™

Welcome to our  
inaugural issue of  
**FLASHship magazine!**

FLASHship, offering select products from six brands with 24-hour shipping is the latest ASSA ABLOY program designed to help you 'doing business better'.

Use FLASHship to help reduce inventory, improve your lead times and control your freight costs – and simplify ordering! Products from all six of the ASSA ABLOY brands are available for order on one order form, and you receive one invoice. You can even place your order online for quickest response.

Check out pages 11-54 for a listing of all the products available through this program.

Contact us with any questions at 800-438-1951 or speak with your local ASSA ABLOY Door Security Solutions representative.



# FLASHship™ Program Information

The ASSA ABLOY FLASHship program allows the convenience of placing a single order for Yale architectural hardware plus accessory products from five ASSA ABLOY brands. This program contains selected popular products from Markar, McKinney, Pemko, Rixson, Rockwood and Yale all shipping from one of our FLASHship locations within 24-hours.

## QUALIFICATIONS

To place a qualifying order for the FLASHship program:

- A. Use the "FLASHship Order Form" on pages 54-55 and indicate product by FLASHship part number as stated in the FLASHship catalog, or
- B. Use your own purchase order with "FLASHship Program" prominently indicated. Also, products must be indicated by their FLASHship part number or by the exact model number for available product configurations in the current FLASHship program book, or
- C. Enter FLASHship order by using the on-line order entry process.

## ONLINE ORDER ENTRY

FLASHship orders can be entered by using our convenient online order entry system. Available on the ASSA ABLOY extranet, the dedicated FLASHship icon takes the user directly to the web-based form that offers easy-to-use drop-down menus to assist with product search and selection.

### Order Form

Please use the form on pages 56-57 when placing orders for FLASHship products.

### Lead Time

Lead time is 24-hours from receipt of order. We reserve the right to limit quantities.

Only items printed in this current publication will be given 24-hour lead times for shipping.

### Part Numbers

Specific part numbers are assigned to each unique configuration. These FLASHship part numbers should be included on the purchase order to ensure ease of processing.

### Mixed Orders

To ensure expedited processing, FLASHship products must be submitted on a separate purchase order from non-FLASHship products. Any orders received including items that are not currently published in the FLASHship offering will be returned to the customer for re-submittal.

The website for Online Order Entry is [www.assaabloydss.com/extranet](http://www.assaabloydss.com/extranet) and then click the FLASHship icon. Contact your customer service representative to set up online order entry access and training.



# Contacts

## Customer Service

For FLASHship customer service questions and/or issues, call: 800-438-1951

## Hours of Operation

Customer Service: 8:00 am – 4:30 pm EST

Chicago facility: 7:30 am – 4:00 pm CST

## ASSA ABLOY Service Centers

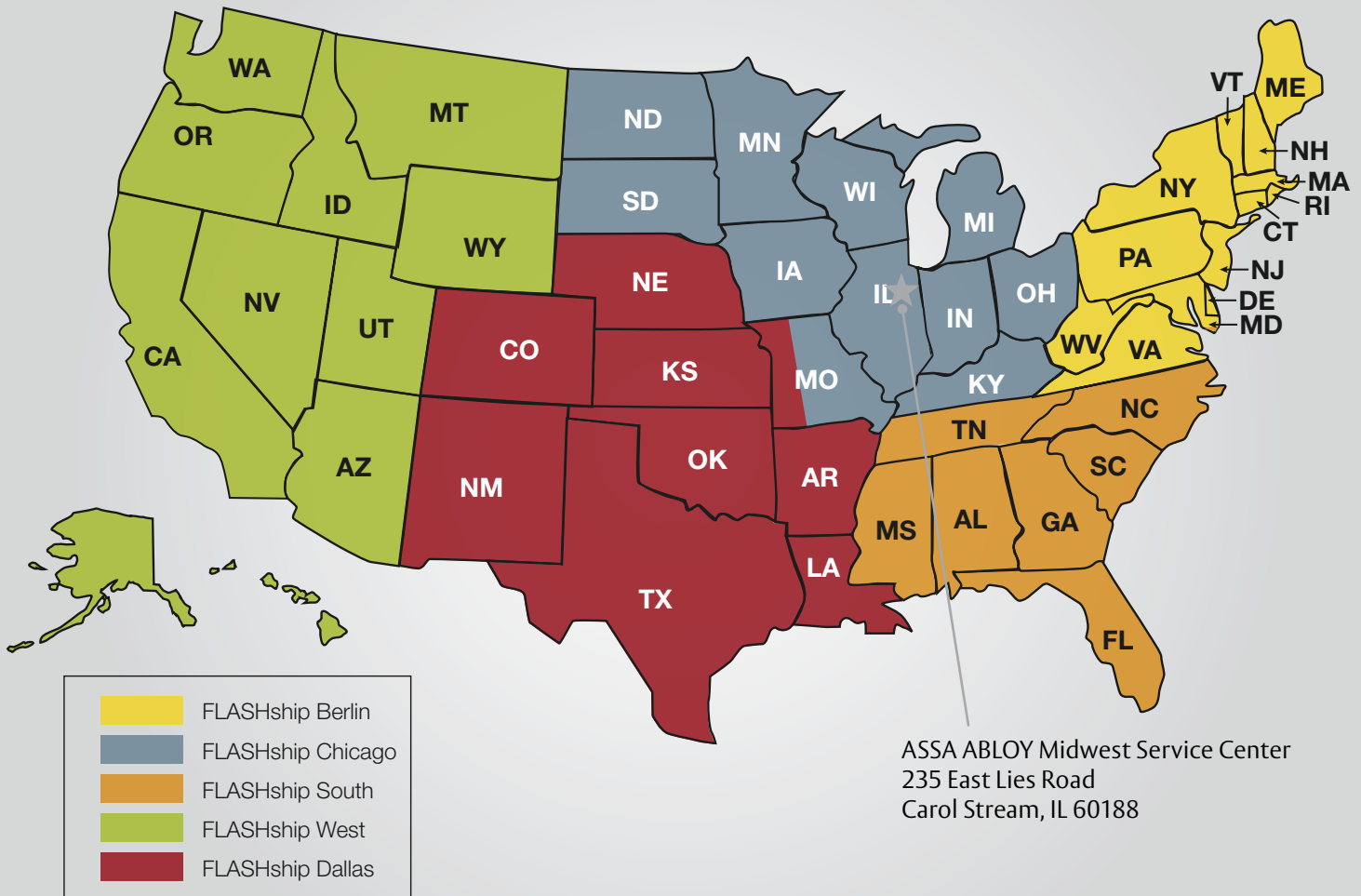
FLASHship products are fully stocked at your local service center, which brings doors, frames and hardware closer to you and your job sites.

## Technical Product Support

For technical questions and/or issues with products, please contact the brands' technical support:

Brand	Hours of Operation	Toll-Free
McKinney	8:00 am – 4:30 pm EST	800-346-7707
Markar/Pemko	7:00 am – 7:00 pm CST	800-824-3018
Rixson	8:00 am – 4:30 pm EST	800-457-5670
Rockwood	8:00 am - 7:00 pm EST Mon.-Thurs. 8:00 am - 4:30 pm EST Friday	800-458-2424
Yale	8:00 am – 4:30 pm EST	800-438-1951 x 5033

## FLASHship Territories



# Speeding to Success: ASSA ABLOY's FLASHship Program Provides 24-Hour Shipping Throughout the U.S.

*An interview with Vicki Newman,  
Director of Business Development, ASSA ABLOY*

---

## **"Doing Business Better"**

John Donoghue, President of TACC, appreciates the ability to reduce inventory and more efficiently manage freight. Washington Architectural Hardware owner Don Anderson states the low prepaid freight allowance and short lead times have become an important component in his business plan. Jim Pellegrini, Vice President of Park Avenue Building Supplies, enjoys looking like a hero to his valued customers. These ASSA ABLOY partners are located across the country and serve varying channels in the architectural hardware industry. What they all have in common is their recognition of the value ASSA ABLOY FLASHship brings to their companies.

## **Convenient, Efficient and Cost Effective Packages**

When ASSA ABLOY FLASHship launched in June 2013, the goal was to bring additional value to our customers by providing quality hardware for the entire opening in an efficient and expedient way. The industry leading brands of Markar, McKinney, Pemko, Rixson, Rockwood and Yale were now orderable on one purchase order and shipped together in 24 hours, creating a convenient, efficient and cost effective package. That initial Berlin, CT launch was so successful, a second location in Ventura, CA opened the following December. Within 6 months, FLASHship was supplying over 850 high demand ASSA ABLOY products to hundreds of customers from coast to coast with 24 hour shipping.

With strong customer support for faster delivery, a third FLASHship location in Austell, GA opened in December 2014, and a fourth in Dallas, TX in May 2015. With these successes under our belt, we are very pleased to announce the opening of FLASHship Chicago in August 2016. ASSA ABLOY customers in forty two states now enjoy full hardware opening deliveries in 2 days or less after receipt of purchase order. With additional locations in development, we will soon reach our goal of supplying customers in all 48 continental states with not only 24 hour shipping but delivery in two days or less.

FLASHship currently offers hardware providers the most comprehensive one stop selection available, encompassing more than 850 high demand products shipped in 24 hours from one of four strategically placed warehouses to maximize one to two day delivery. With a low \$1500 prepaid freight option, FLASHship has quickly become the hardware supply program of choice by customers throughout the nation. With a 98% on time order fill rate, FLASHship is recognized as the most dependable, convenient and cost saving supply option in the industry.

## **Supporting our Partnerships**

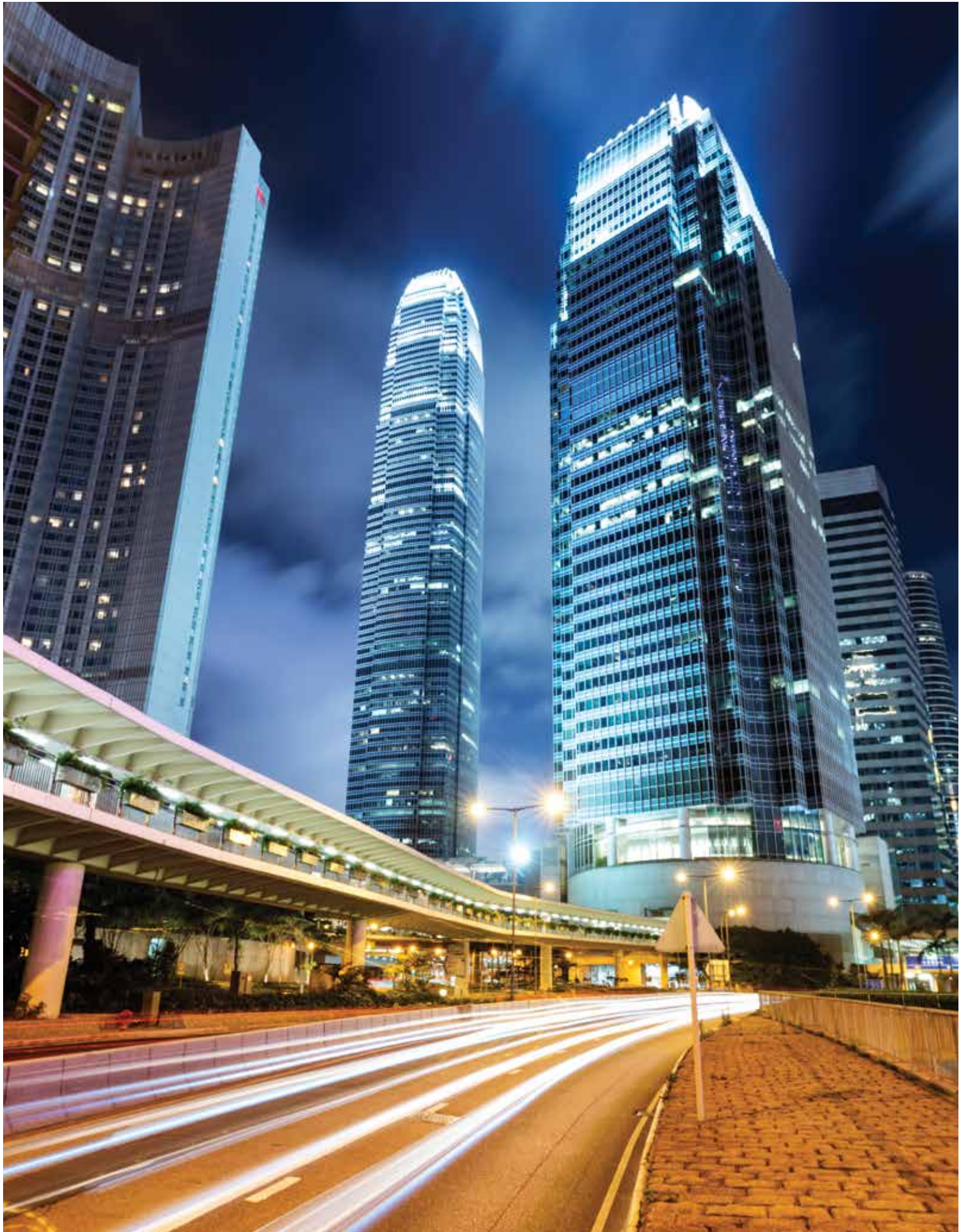
"The overwhelming success of FLASHship can be contributed to the attention to detail in meeting the needs of our customers," said Vicki Newman, Director of Business Development for ASSA ABLOY Door Security Solutions and the driving force behind FLASHship. "We've structured a program that our competitors simply cannot replicate."

Newman believes that the success of FLASHship reflects ASSA ABLOY's commitment to the success of hardware suppliers across the country.

"FLASHship was developed, designed and driven by the fact that we consider contract hardware distributors our business partners," she said. "Our goal was to create a supply chain that enables our customers to compete in the discretionary business channel by reducing their inventory and shipping costs while ensuring their ability to respond quickly to opportunities critical to their success."

"I knew we had achieved our goal when the most repeated comment from our customers was that the value of FLASHship was so comprehensive it appeared to have been structured from their side of the desk. The bottom line is that we have truly invested in our customers' businesses by implementing the FLASHship program."





# Designer and Architect Marcello Pozzi Adds Detail and Emotion to New Soho Hotel with Rockwood Pulls

Hotel Hugo defines industrial chic. The upscale, contemporary hotel was the vision of designer and architect Marcello Pozzi and Nobutaka Ashihara, the project's architect of record. Recently opened in SoHo, the design blends the neighborhood's sophisticated atmosphere with the gritty underpinnings of New York City in a style Pozzi refers to as a game of contrast, a juxtaposition of finishes. There is a striking interplay between opposites throughout, polished stainless steel, for example, that complements rough concrete. This careful balance isn't an accident; Pozzi relied on seemingly minor details, like ASSA ABLOY's Rockwood door pulls, to create Hotel Hugo's distinct character.

## The Importance of Hardware

When it comes to tying together a space's look and feel, Pozzi believes hardware does a lot of the heavy lifting. Since the door pull serves as each guest's first touch point with the hotel, Pozzi wanted to infuse the experience of opening the front door for the first time with emotional resonance, so he insisted on something more dramatic and less predictable than the stainless steel typically used for commercial entrances.

"Hardware gives character to a space, even more so than other design elements," said Pozzi. "It's both visual and interactive, creating character through sight and touch."

Having used Rockwood for prior projects, the manufacturer's high-end hand-stitched leather offset pulls instantly came to mind when Pozzi was looking for hardware that did its job with enough style to also serve as a critical design element. This particular style of pulls is very contemporary. At the same time, unlike most office hardware, it also emulates warmth. He chose pulls with thick 1½" soft leather grips to elicit a stronger, conscious reaction from guests as they enter. And because he had worked with Rockwood before, Pozzi knew the selected hardware would exceed expectations in terms of quality.

## Inside Hotel Hugo

With soaring 12-foot wood doors, the six-foot Rockwood pulls are a perfect fit. Since Pozzi insisted on design consistency beyond the front entrance, he used a variety of Rockwood architectural door pulls in many other parts of the hotel including entry, restaurant, and doors in public areas such as the meeting room and business center.

The restaurant offers more examples of Pozzi's flair for mixing elements and finishes. The bar includes a polished concrete countertop, boldly accented with polished stainless steel hardware. Pozzi used two pull sizes for the doors in the restaurant, a 72-inch pull for most doors and a 30-inch version for the private dining area in the back. The 72-inch pulls attach to the door at three points, which is unique in the industry. Rockwood offers an optional mid-post which provides added support and visual detail for long door pulls. Pozzi also chose rounded end pulls, which makes the entrances to the restaurant and private dining area look more luxurious.

Hotel Hugo features a wood storefront, with modern proportions and detail. After the custom-built 12-foot wood storefront doors there are secondary glass doors – yet another example of traditional juxtaposed with contemporary – all tied together with the elegant Rockwood door pulls. Pozzi gave additional exposure to the hardware by using accent lights, making the hardware stand out against both the wood and the glass doors.



### A Critical Design Element

Although quite contemporary, there's a retro feel in the hotel restrooms and suites, and the exposed hardware remains a constant detail. As most industrial places are characterized by hardware and steel, statement hardware with character is central to the hotel's overall design.

Hardware often subconsciously gives character to a space. All of the handrails, door pulls, handles, decorative lights and even trim around mirrors are thoughtfully chosen – Rockwood pulls are critical in communicating that the guest has indeed arrived at Hotel Hugo.



# Terms and Conditions

## Minimum Order

Minimum invoice is \$50.00 net product value.

## Quotes

Quoted projects do not qualify for the FLASHship™ program. Standard buying program discounts only.

## Freight

All orders are shipped FOB factory/warehouse, except as expressly provided below. When delivered to the Transportation Company, the Purchaser assumes the risk of loss or damage in transit.

Customer orders with net product value in excess of \$1,500.00 for the continental United States and \$2,000.00 for Alaska and Hawaii will be shipped prepaid by the ASSA ABLOY carrier of choice to a single destination point in the United States.

Customer orders with net product value in excess of \$1,500.00 for the continental US and \$2,000.00 for Alaska and Hawaii will be shipped prepaid by the ASSA ABLOY carrier of choice to a single destination point in the United States.

A minimum freight and handling charge of \$15.00 will be charged on orders with net product value of \$400.00 or less.

For orders with net product value greater than \$400.00 and less than \$1,500.00, freight charges will be calculated as a percentage of the net invoice value and will be added to Customer's invoice. The percentage is based on the National U.S. Average On Highway Diesel Fuel Prices as reported by the US Department of Energy in effect at the beginning of each quarter. On the first Monday of each quarter, the new rate will be published on the ASSA ABLOY Door Security Solutions extranet and will go into effect on the 2nd Monday of the quarter. Please refer to the ASSA ABLOY distributor extranet for the rate chart and information on the current freight charge percentage. The percentage in effect at the time of shipment of the order will be charged.

If a customer provides their own freight account number for the freight charges, ASSA ABLOY will apply a handling fee of \$25.00 to the invoice.

Expedited shipping options – If the customer requests an expedited method of shipment such as "Next Day Air" the charges will be prepaid by ASSA ABLOY and the full rate for the service, as published by the carrier, will be added to the customer's invoice.

Packing – ASSA ABLOY will pack, mark and ship the products according to its standard procedures for shipment, unless the parties agree, in writing, that ASSA ABLOY will comply with any special instructions provided by the customer. Special instructions must be submitted, in writing, at time of order placement. Compliance with special instructions may result in an increased price.

## Delivery

Orders will be acknowledged and given a scheduled delivery date. Complete information is required to process all orders. Orders with insufficient information for processing (i.e. part numbers) may be subject to extended lead times which are relative to the time required in obtaining the necessary information for order processing.

Yale will not be liable for back charges incurred based on availability of product or as a result of delays in delivery caused by insufficient information required to process an order. Yale will not be held responsible for delays in delivery caused by strikes, fires, floods or any other causes beyond our control, including the delivery of material to us. Under no circumstances shall Yale be liable or accountable for consequential damages due to failure of delivery.

## Changes/Cancellations

Due to the promptness of delivery, no changes or cancellations can be accepted.

## Prices

All shipments will be made at prices prevailing at time of shipment.

## Terms

Invoices dated the 1st through the 15th will be due for 2% discount on the 10th of the following month. Invoices dated the 16th through the 31st will be due for 2% discount on the 25th of the following month. Net immediately thereafter.

## Returned Goods

All FLASHship products returned as "Goodwill" must meet the following criteria to be considered a return:

- Be in original, unmarked and undamaged cartons.
- Shipped and invoiced within the previous 30 days.

No restocking fee will apply. Upon receipt and verification that the returned merchandise meets the foregoing conditions, a credit will be issued for the original invoice amount.

*Consult the current Price Books for pricing information and a complete list of Terms & Conditions.*

## Warranties

All standard limited warranties apply. Consult current Price Books for a complete list of warranty information.





*inTouch*®



The reliability  
of Yale locks...

With today's  
touchscreen technology...

A world  
of new options  
for building  
owners.

*Bring the interactive  
touchscreen to life with a  
simple inTouch.*



Yale brings touchscreen access to robust cylindrical locksets – modern electronics combine with stand-alone security.

*inTouch*® is recommended for anywhere requiring simple controlled access – management offices, storerooms, restroom doors, staff lounges, records storage areas, airport terminals, IT departments, and many more.

**Get *inTouch*.**

1-800-438-1951  
[www.yalelocks.com](http://www.yalelocks.com)

An ASSA ABLOY Group brand

**ASSA ABLOY**



Mortise Lock Comparison						
Yale	Cal-Royal	Dorma	Falcon	Hager	PDQ	Stanley Commercial
8800FL	M8000	ML9000	M	3800	MR	QMS100

Grade 1 Cylindrical Lock Comparison						
Yale	Cal-Royal	Dorma	Falcon	Hager	PDQ	Stanley Commercial
4700LN	CGN	CL800	K/T	3400	GT	QCL100

Grade 2 Cylindrical Lock Comparison						
Yale	Cal-Royal	Dorma	Falcon	Hager	PDQ	Stanley Commercial
4600LN	SL	C500	B/W	3500	GP/SA	QCL200

Deadbolt Comparison							
	Yale	Cal-Royal	Dorma	Falcon	Hager	PDQ	Stanley Commercial
Grade 1	D100	CRB	D800	D100	3100	KT100	QDB100
Grade 2	D200	T	DB600	D200	3200	KV100	QDB200

Grade 1 Heavy Duty Closer Comparison						
Yale	Cal-Royal	Dorma	Falcon	Hager	PDQ	Stanley Commercial
1100BF	300	7400	SC61	5300	3100	QDC100

Grade 1 Architectural Closer Comparison						
Yale	Cal-Royal	Dorma	Falcon	Hager	PDQ	Stanley Commercial
2700	N900	8600	SC81	5200	5300	QDC200

Grade 1 Commercial Exit Device Comparison - Stainless Steel						
Yale	Cal-Royal	Dorma	Falcon	Hager	PDQ	Stanley Commercial
5800	CR441	8900	SC71	5100	7400	QED100

Grade 2 Cylindrical Lock Comparison						
Yale	Cal-Royal	Dorma	Falcon	Hager	PDQ	Stanley Commercial
1800	2200	8300	19	4700	4200	QED300

Grade 1 Commercial Exit Device Comparison - Stainless Steel						
Yale	Cal-Royal	Dorma	Falcon	Hager	PDQ	Stanley Commercial
2100	9800	NA	4700	4200	GP/SA	QED100

Fax 877-888-2772, email [flashship@assaabloy.com](mailto:flashship@assaabloy.com) or use Online Order Entry at [www.assaabloydss.com/extranet](http://www.assaabloydss.com/extranet) by clicking the FLASHship™ icon  
*Note: FLASHship™ reserves the right to limit quantities.*

Copyright © 2015-2016, Yale Security Inc., an ASSA ABLOY Group company. All rights reserved.  
 Reproduction in whole or in part without the express written permission of Yale Security Inc. is prohibited.





Augusta - AUR



Pacific Beach - PBR

Design	Model #	Finish	Hand	Strike	Cylinder	FLASHship™ #	Approx. Wt. Each (Lbs)
<b>8801FL - Passage or Closet Latch</b>							
AUR	8801FL	613E	RH	2815	—	885398	6
AUR	8801FL	626	RH	2815	—	885015	6
PBR	8801FL	626	RH	2815	—	885016	6
<b>8802FL - Privacy, Bedroom or Bath Lock</b>							
AUR	8802FL	613E	RH	2815	—	885400	6
AUR	8802FL	626	RH	2815	—	885017	6
PBR	8802FL	613E	RH	2815	—	885403	6
PBR	8802FL	626	RH	2815	—	885018	6
<b>8805FL - Storeroom or Closet Lock</b>							
AUR	8805FL	613E	RH	2815	Less Cylinder	885404	6
AUR	8805FL	626	RH	2815	Less Cylinder	885019	6
PBR	8805FL	613E	RH	2815	Less Cylinder	885406	6
PBR	8805FL	626	RH	2815	Less Cylinder	885020	6
<b>8807FL - Entry Lock</b>							
AUR	8807FL	613E	RH	2815	Less Cylinder	885407	6
AUR	8807FL	626	RH	2815	Less Cylinder	885021	6
PBR	8807FL	613E	RH	2815	Less Cylinder	885409	6
PBR	8807FL	626	RH	2815	Less Cylinder	685022	6
<b>8808FL - Classroom Lock</b>							
AUR	8808FL	613E	RH	2815	Less Cylinder	885410	6
AUR	8808FL	626	RH	2815	Less Cylinder	885023	6
PBR	8808FL	626	RH	2815	Less Cylinder	885024	6
<b>8822FL - Dormitory or Exit Lock</b>							
AUR	8822FL	613E	RH	2815	Less Cylinder	885412	7
AUR	8822FL	626	RH	2815	Less Cylinder	885025	7
PBR	8822FL	626	RH	2815	Less Cylinder	885026	7
<b>8847FL - Apartment Corridor Door Lock</b>							
AUR	8847FL	613E	RH	2815	Less Cylinder	885416	7
AUR	8847FL	626	RH	2815	Less Cylinder	885027	7
PBR	8847FL	613E	RH	2815	Less Cylinder	885417	7
PBR	8847FL	626	RH	2815	Less Cylinder	885028	7

Fax 877-888-2772, email [flashship@assaabloy.com](mailto:flashship@assaabloy.com) or use  
 Online Order Entry at [www.assaabloydss.com/extranet](http://www.assaabloydss.com/extranet) by clicking the FLASHship™ icon  
 Note: FLASHship™ reserves the right to limit quantities.

Copyright © 2015-2016, Yale Security Inc., an ASSA ABLOY Group company. All rights reserved.  
 Reproduction in whole or in part without the express written permission of Yale Security Inc. is prohibited.

An ASSA ABLOY Group brand

**ASSA ABLOY**



Augusta - AU x CN

Design	Model #	Finish	Hand	Strike	Cylinder	FLASHship™ #	Approx. Wt. Each (Lbs)
<b>8801FL - Passage or Closet Latch</b>							
AUCN	8801FL	613E	RH	2815	—	885399	6.5
AUCN	8801FL	626	RH	2815	—	885330	6.5
<b>8802FL - Privacy, Bedroom or Bath Lock</b>							
AUCN	8802FL	613E	RH	2815	—	885401	7.5
AUCN	8802FL	626	RH	2815	—	885331	7.5
<b>8805FL - Storeroom or Closet Lock</b>							
AUCN	8805FL	613E	RH	2815	Less Cylinder	885405	7.5
AUCN	8805FL	626	RH	2815	Less Cylinder	885332	7.5
<b>8807FL - Entry Lock</b>							
AUCN	8807FL	613E	RH	2815	Less Cylinder	885408	7.5
AUCN	8807FL	626	RH	2815	Less Cylinder	885333	7.5
<b>8808FL - Classroom Lock</b>							
AUCN	8808FL	613E	RH	2815	Less Cylinder	885411	7.5
AUCN	8808FL	626	RH	2815	Less Cylinder	885334	7.5
<b>8822FL - Dormitory or Exit Lock</b>							
AUCN	8822FL	613E	RH	2815	Less Cylinder	885413	7.5
AUCN	8822FL	626	RH	2815	Less Cylinder	885335	7.5
<b>8847FL - Apartment Corridor Door Lock</b>							
AUCN	8847FL	613E	RH	2815	Less Cylinder	885415	7.5
AUCN	8847FL	626	RH	2815	Less Cylinder	885336	7.5

## Mortise Cylinders and Keyblanks

Model #	Description	Key Section	Finish	Collar Size Included	FLASHship™ #	Approx. Wt. Each (Lbs)
Mortise Cylinders						
2153 x 1-1/8"	6-Pin, Keyed Random	PARA	613E	1765.250	885396	0.4
2153 x 1-1/8"	6-Pin, Keyed Random	PARA	626	1765.250	885000	0.4
2553 x 1-1/8"	6-Pin, Schlage® Keyed Random	C	613E	1765.250	885420	0.4
2553 x 1-1/8"	6-Pin, Schlage® Keyed Random	C	626	1765.250	885001	0.4
Mortise Housings						
K660 x 1-3/8"	SFIC Housing Only, Less Core	—	613E	1765.563	885421	0.4
K660 x 1-3/8"	SFIC Housing Only, Less Core	—	626	1765.563	885002	0.4
Model #	Description	Key Section	FLASHship™ #		Approx. Wt. Each (Lbs)	
Keyblanks						
RN11	6-Pin Blank	PARA	885006		0.1	

Fax 877-888-2772, email [flashship@assaabloy.com](mailto:flashship@assaabloy.com) or use Online Order Entry at [www.assaabloydss.com/extranet](http://www.assaabloydss.com/extranet) by clicking the FLASHship™ icon

*Note: FLASHship™ reserves the right to limit quantities.*

Copyright © 2015-2016, Yale Security Inc., an ASSA ABLOY Group company. All rights reserved. Reproduction in whole or in part without the express written permission of Yale Security Inc. is prohibited.





Augusta - AU



Monroe - MO



Pacific Beach - PB

Design	Model #	Finish	Strike	Cylinder	FLASHship™ #	Approx. Wt. Each (Lbs)
<b>4701LN - Passage or Closet Latch</b>						
AU	4701LN	613E	497 ANSI	—	885370	4
AU	4701LN	626	497 ANSI	—	885045	4
MO	4701LN	613E	497 ANSI	—	885372	4
MO	4701LN	626	497 ANSI	—	885239	4
PB	4701LN	613E	497 ANSI	—	885371	4
PB	4701LN	626	497 ANSI	—	885046	4
<b>4702LN - Privacy, Bedroom or Bath Lock</b>						
AU	4702LN	613E	497 ANSI	—	885373	4
AU	4702LN	626	497 ANSI	—	885047	4
MO	4702LN	613E	497 ANSI	—	885375	4
MO	4702LN	626	497 ANSI	—	885240	4
PB	4702LN	613E	497 ANSI	—	885374	4
PB	4702LN	626	497 ANSI	—	885048	4
<b>4705LN - Storeroom or Closet Lock</b>						
AU	4705LN	613E	497 ANSI	1804, 6-Pin, PARA Keyed Random	885376	5
AU	4705LN	613E	497 ANSI	2804, 6-Pin, Schlage® C Keyed Random	885377	5
AU	4705LN	626	497 ANSI	1804, 6-Pin, PARA Keyed Random	885049	5
AU	4705LN	626	497 ANSI	2804, 6-Pin, Schlage® C Keyed Random	885050	5
MO	4705LN	613E	497 ANSI	1804, 6-Pin, PARA Keyed Random	885380	5
MO	4705LN	613E	497 ANSI	2804, 6-Pin, Schlage® C Keyed Random	885381	5
MO	4705LN	626	497 ANSI	1804, 6-Pin, PARA Keyed Random	885241	5
MO	4705LN	626	497 ANSI	2804, 6-Pin, Schlage® C Keyed Random	885242	5
PB	4705LN	613E	497 ANSI	1804, 6-Pin, PARA Keyed Random	885378	5
PB	4705LN	613E	497 ANSI	2804, 6-Pin, Schlage® C Keyed Random	885379	5
PB	4705LN	626	497 ANSI	1804, 6-Pin, PARA Keyed Random	885051	5
PB	4705LN	626	497 ANSI	2804, 6-Pin, Schlage® C Keyed Random	885052	5
<b>4705LN - Storeroom or Closet Lock (Small Format Interchangeable Core)</b>						
BAU	4705LN	613E	497 ANSI	Less Core	885382	5
BAU	4705LN	626	497 ANSI	Less Core	885053	5
<b>4707LN - Entry Lock</b>						
AU	4707LN	613E	497 ANSI	1804, 6-Pin, PARA Keyed Random	885383	5
AU	4707LN	613E	497 ANSI	2804, 6-Pin, Schlage® C Keyed Random	885384	5
AU	4707LN	626	497 ANSI	1804, 6-Pin, PARA Keyed Random	885054	5
AU	4707LN	626	497 ANSI	2804, 6-Pin, Schlage® C Keyed Random	885055	5
MO	4707LN	613E	497 ANSI	1804, 6-Pin, PARA Keyed Random	885387	5

Fax 877-888-2772, email [flashship@assaabloy.com](mailto:flashship@assaabloy.com) or use  
Online Order Entry at [www.assaabloydss.com/extranet](http://www.assaabloydss.com/extranet) by clicking the FLASHship™ icon

Note: FLASHship™ reserves the right to limit quantities.

Copyright © 2015-2016, Yale Security Inc., an ASSA ABLOY Group company. All rights reserved.  
Reproduction in whole or in part without the express written permission of Yale Security Inc. is prohibited.

An ASSA ABLOY Group brand

**ASSA ABLOY**

## 4700LN Series Grade 1 Cylindrical Locks 2-3/4" Backset



Augusta - AU



Monroe - MO



Pacific Beach - PB

Design	Model #	Finish	Strike	Cylinder	FLASHship™ #	Approx. Wt. Each (Lbs)
<b>4707LN - Entry Lock (Cont)</b>						
MO	4707LN	613E	497 ANSI	2804, 6-Pin, Schlage® C Keyed Random	885397	5
MO	4707LN	626	497 ANSI	1804, 6-Pin, PARA Keyed Random	885243	5
MO	4707LN	626	497 ANSI	2804, 6-Pin, Schlage® C Keyed Random	885244	5
PB	4707LN	613E	497 ANSI	1804, 6-Pin, PARA Keyed Random	885385	5
PB	4707LN	613E	497 ANSI	2804, 6-Pin, Schlage® C Keyed Random	885386	5
PB	4707LN	626	497 ANSI	1804, 6-Pin, PARA Keyed Random	885056	5
PB	4707LN	626	497 ANSI	2804, 6-Pin, Schlage® C Keyed Random	885057	5
<b>4707LN - Entry Lock (Small Format Interchangeable Core)</b>						
BAU	4707LN	613E	497 ANSI	Less Core	885388	5
BAU	4707LN	626	497 ANSI	Less Core	885058	5
<b>4708LN - Classroom Lock</b>						
AU	4708LN	613E	497 ANSI	1804, 6-Pin, PARA Keyed Random	885389	5
AU	4708LN	613E	497 ANSI	2804, 6-Pin, Schlage® C Keyed Random	885390	5
AU	4708LN	626	497 ANSI	1804, 6-Pin, PARA Keyed Random	885059	5
AU	4708LN	626	497 ANSI	2804, 6-Pin, Schlage® C Keyed Random	885060	5
MO	4708LN	613E	497 ANSI	1804, 6-Pin, PARA Keyed Random	885393	5
MO	4708LN	613E	497 ANSI	2804, 6-Pin, Schlage® C Keyed Random	885394	5
MO	4708LN	626	497 ANSI	1804, 6-Pin, PARA Keyed Random	885245	5
MO	4708LN	626	497 ANSI	2804, 6-Pin, Schlage® C Keyed Random	885246	5
PB	4708LN	613E	497 ANSI	1804, 6-Pin, PARA Keyed Random	885391	5
PB	4708LN	613E	497 ANSI	2804, 6-Pin, Schlage® C Keyed Random	885392	5
PB	4708LN	626	497 ANSI	1804, 6-Pin, PARA Keyed Random	885061	5
PB	4708LN	626	497 ANSI	2804, 6-Pin, Schlage® C Keyed Random	885062	5
<b>4708LN - Classroom Lock (Small Format Interchangeable Core)</b>						
BAU	4708LN	613E	497 ANSI	Less Core	885395	5
BAU	4708LN	626	497 ANSI	Less Core	885063	5

Fax 877-888-2772, email [flashship@assaabloy.com](mailto:flashship@assaabloy.com) or use Online Order Entry at [www.assaabloydss.com/extranet](http://www.assaabloydss.com/extranet) by clicking the FLASHship™ icon

*Note: FLASHship™ reserves the right to limit quantities.*

Copyright © 2015-2016, Yale Security Inc., an ASSA ABLOY Group company. All rights reserved. Reproduction in whole or in part without the express written permission of Yale Security Inc. is prohibited.

An ASSA ABLOY Group brand

**ASSA ABLOY**





Augusta - AU



Monroe - MO



Pacific Beach - PB

Design	Model #	Finish	Strike	Cylinder	FLASHship™ #	Approx. Wt. Each (Lbs)
<b>4601LN - Passage or Closet Latch</b>						
AU	4601LN	613E	497 ANSI	—	885307	4
AU	4601LN	626	497 ANSI	—	885089	4
MO	4601LN	613E	497 ANSI	—	885360	4
MO	4601LN	626	497 ANSI	—	885247	4
PB	4601LN	613E	497 ANSI	—	885308	4
PB	4601LN	626	497 ANSI	—	885090	4
<b>4602LN - Privacy, Bedroom or Bath Lock</b>						
AU	4602LN	613E	497 ANSI	—	885309	4
AU	4602LN	626	497 ANSI	—	885091	4
MO	4602LN	613E	497 ANSI	—	885361	4
MO	4602LN	626	497 ANSI	—	885248	4
PB	4602LN	613E	497 ANSI	—	885310	4
PB	4602LN	626	497 ANSI	—	885092	4
<b>4605LN - Storeroom or Closet Lock</b>						
AU	4605LN	613E	497 ANSI	1806, 6-Pin, PARA Keyed Random	885311	5
AU	4605LN	613E	497 ANSI	2806, 6-Pin, Schlage® C Keyed Random	885312	5
AU	4605LN	626	497 ANSI	1806, 6-Pin, PARA Keyed Random	885093	5
AU	4605LN	626	497 ANSI	2806, 6-Pin, Schlage® C Keyed Random	885094	5
MO	4605LN	613E	497 ANSI	1806, 6-Pin, PARA Keyed Random	885362	5
MO	4605LN	613E	497 ANSI	2806, 6-Pin, Schlage® C Keyed Random	885363	5
MO	4605LN	626	497 ANSI	1806, 6-Pin, PARA Keyed Random	885249	5
MO	4605LN	626	497 ANSI	2806, 6-Pin, Schlage® C Keyed Random	885250	5
PB	4605LN	613E	497 ANSI	1806, 6-Pin, PARA Keyed Random	885313	5
PB	4605LN	613E	497 ANSI	2806, 6-Pin, Schlage® C Keyed Random	885314	5
PB	4605LN	626	497 ANSI	1806, 6-Pin, PARA Keyed Random	885095	5
PB	4605LN	626	497 ANSI	2806, 6-Pin, Schlage® C Keyed Random	885096	5
<b>4605LN - Storeroom or Closet Lock (Small Format Interchangeable Core)</b>						
BAU	4605LN	613E	497 ANSI	Less Core	885315	5
BAU	4605LN	626	497 ANSI	Less Core	885097	5
<b>4607LN - Entry Lock</b>						
AU	4607LN	613E	497 ANSI	1806, 6-Pin, PARA Keyed Random	885316	5
AU	4607LN	613E	497 ANSI	2806, 6-Pin, Schlage® C Keyed Random	885317	5
AU	4607LN	626	497 ANSI	1806, 6-Pin, PARA Keyed Random	885098	5
AU	4607LN	626	497 ANSI	2806, 6-Pin, Schlage® C Keyed Random	885099	5
MO	4607LN	613E	497 ANSI	1806, 6-Pin, PARA Keyed Random	885364	5
MO	4607LN	613E	497 ANSI	2806, 6-Pin, Schlage® C Keyed Random	885365	5
MO	4607LN	626	497 ANSI	1806, 6-Pin, PARA Keyed Random	885251	5
MO	4607LN	626	497 ANSI	2806, 6-Pin, Schlage® C Keyed Random	885252	5
PB	4607LN	613E	497 ANSI	1806, 6-Pin, PARA Keyed Random	885318	5
PB	4607LN	613E	497 ANSI	2806, 6-Pin, Schlage® C Keyed Random	885319	5
PB	4607LN	626	497 ANSI	1806, 6-Pin, PARA Keyed Random	885100	5
PB	4607LN	626	497 ANSI	2806, 6-Pin, Schlage® C Keyed Random	885101	5

Fax 877-888-2772, email [flashship@assaabloy.com](mailto:flashship@assaabloy.com) or use  
Online Order Entry at [www.assaabloydss.com/extranet](http://www.assaabloydss.com/extranet) by clicking the FLASHship™ icon

Note: FLASHship™ reserves the right to limit quantities.

Copyright © 2015-2016, Yale Security Inc., an ASSA ABLOY Group company. All rights reserved.  
Reproduction in whole or in part without the express written permission of Yale Security Inc. is prohibited.

An ASSA ABLOY Group brand

**ASSA ABLOY**

## 4600LN Series Grade 2 Cylindrical Locks 2-3/4" & 2-3/8" Backset



Augusta - AU



Monroe - MO



Pacific Beach - PB

Design	Model #	Finish	Strike	Cylinder	FLASHship™ #	Approx. Wt. Each (Lbs)
<b>4607LN - Entry Lock (Small Format Interchangeable Core)</b>						
BAU	4607LN	613E	497 ANSI	Less Core	885320	5
BAU	4607LN	626	497 ANSI	Less Core	885102	5
<b>4608LN - Classroom Lock</b>						
AU	4608LN	613E	497 ANSI	1806, 6-Pin, PARA Keyed Random	885321	5
AU	4608LN	613E	497 ANSI	2806, 6-Pin, Schlage® C Keyed Random	885322	5
AU	4608LN	626	497 ANSI	1806, 6-Pin, PARA Keyed Random	885103	5
AU	4608LN	626	497 ANSI	2806, 6-Pin, Schlage® C Keyed Random	885104	5
MO	4608LN	613E	497 ANSI	1806, 6-Pin, PARA Keyed Random	885366	5
MO	4608LN	613E	497 ANSI	2806, 6-Pin, Schlage® C Keyed Random	885367	5
MO	4608LN	626	497 ANSI	1806, 6-Pin, PARA Keyed Random	885253	5
MO	4608LN	626	497 ANSI	2806, 6-Pin, Schlage® C Keyed Random	885254	5
PB	4608LN	613E	497 ANSI	1806, 6-Pin, PARA Keyed Random	885323	5
PB	4608LN	613E	497 ANSI	2806, 6-Pin, Schlage® C Keyed Random	885324	5
PB	4608LN	626	497 ANSI	1806, 6-Pin, PARA Keyed Random	885105	5
PB	4608LN	626	497 ANSI	2806, 6-Pin, Schlage® C Keyed Random	885106	5
<b>4608LN - Classroom Lock (Small Format Interchangeable Core)</b>						
BAU	4608LN	613E	497 ANSI	Less Core	885325	5
BAU	4608LN	626	497 ANSI	Less Core	885107	5
<b>4628LN - Communicating Passage Lock</b>						
AU	4628LN	613E	497 ANSI	—	885326	5
AU	4628LN	626	497 ANSI	—	885108	5
MO	4628LN	613E	497 ANSI	—	885368	5
MO	4628LN	626	497 ANSI	—	885255	5
PB	4628LN	613E	497 ANSI	—	885327	5
PB	4628LN	626	497 ANSI	—	885109	5
<b>4655LN - Dummy Trim</b>						
AU	4655LN	613E	—	—	885328	2
AU	4655LN	626	—	—	885110	2
MO	4655LN	613E	—	—	885369	2
MO	4655LN	626	—	—	885256	2
PB	4655LN	613E	—	—	885329	2
PB	4655LN	626	—	—	885111	2

Fax 877-888-2772, email [flashship@assaabloy.com](mailto:flashship@assaabloy.com) or use Online Order Entry at [www.assaabloydss.com/extranet](http://www.assaabloydss.com/extranet) by clicking the FLASHship™ icon

*Note: FLASHship™ reserves the right to limit quantities.*

Copyright © 2015-2016, Yale Security Inc., an ASSA ABLOY Group company. All rights reserved. Reproduction in whole or in part without the express written permission of Yale Security Inc. is prohibited.

An ASSA ABLOY Group brand

**ASSA ABLOY**





Carolina - CA



Design	Model #	Finish	Strike	Cylinder	FLASHship™ #	Approx. Wt. Each (Lbs)
<b>4601 - Passage or Closet Latch</b>						
CA	4601	630	371	—	885257	2
<b>4602 - Privacy, Bedroom or Bath Lock</b>						
CA	4602	630	371	—	885258	2
<b>4605 - Storeroom or Closet Lock</b>						
CA	4605	630	371	1805, 6-Pin, PARA Keyed Random	885262	2.5
CA	4605	630	371	2805, 6-Pin, Schlage® C Keyed Random	885264	2.5
<b>4605 - Storeroom or Closet Lock (Small Format Interchangeable Core)</b>						
BCA	4605	630	371	Less Core	885266	2.5
<b>4607 - Entry Lock</b>						
CA	4607	630	371	1805, 6-Pin, PARA Keyed Random	885270	2.5
CA	4607	630	371	2805, 6-Pin, Schlage® C Keyed Random	885272	2.5
<b>4607 - Entry Lock (Small Format Interchangeable Core)</b>						
BCA	4607	630	371	Less Core	885274	2.5
<b>4608 - Classroom Lock</b>						
CA	4608	630	371	1805, 6-Pin, PARA Keyed Random	885281	2.5
CA	4608	630	371	2805, 6-Pin, Schlage® C Keyed Random	885283	2.5
<b>4608 - Classroom Lock (Small Format Interchangeable Core)</b>						
BCA	4608	630	371	Less Core	885285	2.5
<b>4655 - Dummy Trim</b>						
CA	4655	630	—	—	885286	1

Latchbolts						
Model #	Finish	Front	Backset	Front Width	FLASHship #	Approx. Wt. Each (Lbs)
Plain						
MCP238	626	Square	2-3/8"	1"	886037	1
MCP238	613	Square	2-3/8"	1"	886039	1
Deadlocking						
MCD238	626	Square	2-3/8"	1"	886038	1
MCD238	613	Square	2-3/8"	1"	886040	1

Strikes for Cylindrical Locks						
Model #	Finish	Description	FLASHship #	Approx. Wt. Each (lbs)		
70S	626	Full lip Strike with anti-rattle tab	886041	1		
70S	613	Full lip Strike with anti-rattle tab	886044	1		
71S	626	Full lip Strike with anti-rattle tab, rounded corners	886042	1		
71S	613	Full lip Strike with anti-rattle tab, rounded corners	886045	1		
371	626	T-Strike for knob & lever	886043	1		
371	613	T-Strike for knob & lever	886046	1		
497	626	ANSI 4-7/8" Curved Lip Strike, 1-1/2" Lip to Center	886092	1		

Fax 877-888-2772, email [flashship@assaabloy.com](mailto:flashship@assaabloy.com) or use  
Online Order Entry at [www.assaabloydss.com/extranet](http://www.assaabloydss.com/extranet) by clicking the FLASHship™ icon

Note: FLASHship™ reserves the right to limit quantities.

Copyright © 2015-2016, Yale Security Inc., an ASSA ABLOY Group company. All rights reserved.  
Reproduction in whole or in part without the express written permission of Yale Security Inc. is prohibited.

An ASSA ABLOY Group brand

**ASSA ABLOY**

## D Series Grade 2 Cylindrical Deadbolts



D212 Deadbolt

Model #	Finish	Strike	Cylinder	FLASHship™ #	Approx. Wt. Each (Lbs)
<b>Cylinder x Thumbturn</b>					
D112	613E	D243	1807, 6-Pin, PARA Keyed Random	886048	2
D112	613E	D243	2807, 6-Pin, Schlage® C Keyed Random	886050	2
D112	626	D243	1807, 6-Pin, PARA Keyed Random	886047	2
D112	626	D243	2807, 6-Pin, Schlage® C Keyed Random	886049	2
D212	613E	D243	1807, 6-Pin, PARA Keyed Random	885337	2
D212	613E	D243	2807, 6-Pin, Schlage® C Keyed Random	885338	2
D212	626	D243	1807, 6-Pin, PARA Keyed Random	885133	2
D212	626	D243	2807, 6-Pin, Schlage® C Keyed Random	885134	2
<b>Cylinder x Thumbturn (Small Format Interchangeable Core)</b>					
B-D112	613E	D243	Less Core	886052	2
B-D112	626	D243	Less Core	886051	2
B-D212	613E	D243	Less Core	885339	2
B-D212	626	D243	Less Core	885135	2
<b>Cylinder x Cylinder</b>					
D122	613E	D243	1808, 6-Pin, PARA Keyed Random	886054	2
D122	613E	D243	2808, 6-Pin, Schlage® C Keyed Random	886056	2
D122	626	D243	1808, 6-Pin, PARA Keyed Random	886053	2
D122	626	D243	2808, 6-Pin, Schlage® C Keyed Random	886055	2
D222	613E	D243	1808, 6-Pin, PARA Keyed Random	885340	2
D222	613E	D243	2808, 6-Pin, Schlage® C Keyed Random	885341	2
D222	626	D243	1808, 6-Pin, PARA Keyed Random	885136	2
D222	626	D243	2808, 6-Pin, Schlage® C Keyed Random	885137	2
<b>Cylinder x Cylinder (Small Format Interchangeable Core)</b>					
B-D122	613E	D243	Less Core	886058	2
B-D122	626	D243	Less Core	886057	2
B-D222	613E	D243	Less Core	885342	2
B-D222	626	D243	Less Core	885138	2
<b>Cylinder x Classroom</b>					
D162	613E	D243	1807, 6-Pin, PARA Keyed Random	886060	2
D162	613E	D243	2807, 6-Pin, Schlage® C Keyed Random	886062	2
D162	626	D243	1807, 6-Pin, PARA Keyed Random	886059	2
D162	626	D243	2807, 6-Pin, Schlage® C Keyed Random	886061	2
D262	613E	D243	1807, 6-Pin, PARA Keyed Random	886067	2
D262	613E	D243	2807, 6-Pin, Schlage® C Keyed Random	886068	2
D262	626	D243	1807, 6-Pin, PARA Keyed Random	886065	2
D262	626	D243	2807, 6-Pin, Schlage® C Keyed Random	886066	2
<b>Cylinder x Classroom (Small Format Interchangeable Core)</b>					
B-D162	613E	D243	Less Core	886064	2
B-D162	626	D243	Less Core	886063	2
B-D262	613E	D243	Less Core	886070	2
B-D262	626	D243	Less Core	886069	2
<b>Blank Plate x Thumbturn</b>					
D242	613E	D243	—	885343	2
D242	626	D243	—	885139	2
<b>Occupancy Indicator x Thumbturn</b>					
D292	613E	D243	—	885419	2
D292	626	D243	—	885418	2

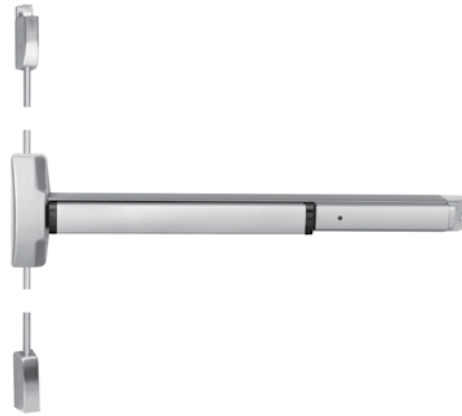
Fax 877-888-2772, email [flashship@assaabloy.com](mailto:flashship@assaabloy.com) or use Online Order Entry at [www.assaabloydss.com/extranet](http://www.assaabloydss.com/extranet) by clicking the FLASHship™ icon

Note: FLASHship™ reserves the right to limit quantities.

Copyright © 2015-2016, Yale Security Inc., an ASSA ABLOY Group company. All rights reserved. Reproduction in whole or in part without the express written permission of Yale Security Inc. is prohibited.



6000 Rim



6110 Surface Vertical Rod

Model #	Description	Finish	Hand*	Strike	FLASHship™ #	Approx. Wt. Each (Lbs)
<b>6100 - Rim</b>						
6100-36	Rim Exit Device, 36"	630	—	757F	886111	11
6100-48	Rim Exit Device, 48"	630	—	757F	886112	11
6100F-36	3 Hour Fire Rated Rim Exit Device, 36"	630	—	757F	886113	11
6100F-48	3 Hour Fire Rated Rim Exit Device, 48"	689	—	757F	886114	11
<b>6110 - Surface Vertical Rod</b>						
6170-36	SVR Exit Device, 36"	630	RHR	791 Top, 790 Bottom	886115	15
6170F-36	SVR Exit Device, 36"	630	RHR	791 Top, 790 Bottom	886117	15
6170F-LBR-36	3 Hour Fire Rated Rim Exit Device, 36" - Less Bottom Rod	630	RHR	791 Top, 790 Bottom	886119	15

Fax 877-888-2772, email [flashship@assaabloy.com](mailto:flashship@assaabloy.com) or use  
 Online Order Entry at [www.assaabloydss.com/extranet](http://www.assaabloydss.com/extranet) by clicking the FLASHship™ icon  
*Note: FLASHship™ reserves the right to limit quantities.*

Copyright © 2015-2016, Yale Security Inc., an ASSA ABLOY Group company. All rights reserved.  
 Reproduction in whole or in part without the express written permission of Yale Security Inc. is prohibited.

An ASSA ABLOY Group brand

**ASSA ABLOY**



## 2100 and 1800 Series Grade 1 Flatbar Exit Devices



2100 Rim



2110 Surface Vertical Rod



1800 Rim



1810 Surface Vertical Rod

Model #	Description	Finish	Hand*	Strike	FLASHship™ #	Approx. Wt. Each (Lbs)
<b>2100 - Rim</b>						
2100-36	Rim Exit Device, 36"	630	—	757F	885148	11
2100-36	Rim Exit Device, 36"	689	—	757F	886021	11
2100-48	Rim Exit Device, 48"	630	—	757F	885149	11
2100-48	Rim Exit Device, 48"	689	—	757F	886025	11
2100F-36	3 Hour Fire Rated Rim Exit Device, 36"	630	—	757F	885150	11
2100F-36	3 Hour Fire Rated Rim Exit Device, 36"	689	—	757F	886022	11
2100F-48	3 Hour Fire Rated Rim Exit Device, 48"	630	—	757F	885151	11
2100F-48	3 Hour Fire Rated Rim Exit Device, 48"	689	—	757F	886026	11
<b>2110 - Surface Vertical Rod</b>						
2110-36	SVR Exit Device, 36"	630	RHR	791 Top, 790 Bottom	885152	15
2110-36	SVR Exit Device, 36"	689	RHR	791 Top, 790 Bottom	886023	15
2110F-36	3 Hour Fire Rated SVR Exit Device, 36"	630	RHR	791 Top, 790 Bottom	885154	15
2110F-36	3 Hour Fire Rated SVR Exit Device, 36"	689	RHR	791 Top, 790 Bottom	886024	15
Model #	Description	Finish	Hand*	Strike	FLASHship™ #	Approx. Wt. Each (Lbs)
<b>1800 - Rim</b>						
1800-36	Rim Exit Device, 36"	689	—	757F	885163	11
1800-36	Rim Exit Device, 36"	695	—	757F	885287	11
1800-48	Rim Exit Device, 48"	689	—	757F	885164	12
1800-48	Rim Exit Device, 48"	695	—	757F	885288	12
1800F-36	3 Hour Fire Rated Rim Exit Device, 36"	689	—	757F	885165	11
1800F-36	3 Hour Fire Rated Rim Exit Device, 36"	695	—	757F	885289	11
1800F-48	3 Hour Fire Rated Rim Exit Device, 48"	689	—	757F	885166	12
1800F-48	3 Hour Fire Rated Rim Exit Device, 48"	695	—	757F	885290	12
<b>1810 - Surface Vertical Rod</b>						
1810-36	SVR Exit Device, 36"	689	RHR	791 Top, 790 Bottom	885167	15
1810-36	SVR Exit Device, 36"	695	RHR	791 Top, 790 Bottom	885291	15
1810F-36	3 Hour Fire Rated SVR Exit Device, 36"	689	RHR	791 Top, 790 Bottom	885169	15
1810F-36	3 Hour Fire Rated SVR Exit Device, 36"	695	RHR	791 Top, 790 Bottom	885292	15

\*Units are field reversible

Fax 877-888-2772, email [flashship@assaabloy.com](mailto:flashship@assaabloy.com) or use Online Order Entry at [www.assaabloydss.com/extranet](http://www.assaabloydss.com/extranet) by clicking the FLASHship™ icon

Note: FLASHship™ reserves the right to limit quantities.

Copyright © 2015-2016, Yale Security Inc., an ASSA ABLOY Group company. All rights reserved. Reproduction in whole or in part without the express written permission of Yale Security Inc. is prohibited.

An ASSA ABLOY Group brand

**ASSA ABLOY**



217F Plate Trim

## 210F Series: Plate Trim

Model #	Finish	Cylinder	FLASHship™ #	Approx. Wt. Each (Lbs)
<b>Dummy Trim Pull Plate</b>				
214F	689	—	885178	1
214F	695	—	885293	1
<b>Nightlatch Cylinder x Pull</b>				
217F	689	Less Cylinder	885179	1
217F	695	Less Cylinder	885294	1

Note: See page 25 for cylinder options



Augusta - AU



Pacific Beach - PB

## 440F Series: Rose Trim

Design	Model #	Finish	Cylinder	FLASHship™ #	Approx. Wt. Each (Lbs)
<b>Nightlatch</b>					
AU	441F	626	1802, 6-Pin, PARA Keyed Random	886019	2.5
AU	441F	626	2802, 6-Pin, Schlage® C Keyed Random	886020	2.5
AU	441F	689	1802, 6-Pin, PARA Keyed Random	886015	2.5
AU	441F	689	2802, 6-Pin, Schlage® C Keyed Random	886016	2.5
<b>Classroom</b>					
AU	446F	626	1802, 6-Pin, PARA Keyed Random	885180	2.5
AU	446F	626	2802, 6-Pin, Schlage® C Keyed Random	885181	2.5
AU	446F	689	1802, 6-Pin, PARA Keyed Random	886017	2.5
AU	446F	689	2802, 6-Pin, Schlage® C Keyed Random	886018	2.5
AU	446F	695	1802, 6-Pin, PARA Keyed Random	885299	2.5
AU	446F	695	2802, 6-Pin, Schlage® C Keyed Random	885300	2.5
PB	446F	626	1802, 6-Pin, PARA Keyed Random	885182	2.5
PB	446F	626	2802, 6-Pin, Schlage® C Keyed Random	885183	2.5
<b>Classroom (Small Format Interchangeable Core)</b>					
BAU	446F	626	Less Core	885184	2.5
BAU	446F	695	Less Core	885303	2.5
<b>Dummy Free-Wheeling Lever</b>					
AU	448F	626	—	885185	2.5
AU	448F	695	—	885304	2.5
PB	448F	626	—	885186	2.5
PB	448F	695	—	885305	2.5

Fax 877-888-2772, email [flashship@assaabloy.com](mailto:flashship@assaabloy.com) or use  
Online Order Entry at [www.assaabloydss.com/extranet](http://www.assaabloydss.com/extranet) by clicking the FLASHship™ icon

Note: FLASHship™ reserves the right to limit quantities.

Copyright © 2015-2016, Yale Security Inc., an ASSA ABLOY Group company. All rights reserved.  
Reproduction in whole or in part without the express written permission of Yale Security Inc. is prohibited.

An ASSA ABLOY Group brand

**ASSA ABLOY**





426F Escutcheon Trim



M200 Series

## 420F Series: Escutcheon Trim

Design	Model #	Finish	Hand*	Cylinder	FLASHship™ #	Approx. Wt. Each (Lbs)
<b>Classroom/Storeroom</b>						
AU	426F	630	RHR	Less Cylinder	885187	2.7
AU	426F	695	RHR	Less Cylinder	885295	2.7
PB	426F	630	RHR	Less Cylinder	885188	2.7
PB	426F	695	RHR	Less Cylinder	885296	2.7
<b>Passage/Dummy</b>						
AU	428F	630	RHR	—	885189	2.7
AU	428F	695	RHR	—	885297	2.7
PB	428F	630	RHR	—	885190	2.7
PB	448F	695	RHR	—	885305	2.7

## 620F Series: Escutcheon Trim

Design	Model #	Finish	Hand*	FLASHship™ #	Approx. Wt. Each (Lbs)
<b>Exit Only/Blank Plate</b>					
—	620F	630	—	021696	2
<b>Classroom/Storeroom</b>					
AU	626F	630	RHR	886126	5
PB	626F	630	RHR	886127	5
<b>Passage/Dummy</b>					
AU	626F	630	RHR	886128	5
PB	626F	630	RHR	886129	5

## 630F Series: Escutcheon Trim

Design	Model #	Finish	Hand*	Cylinder	FLASHship™ #	Approx. Wt. Each (Lbs)
<b>Nightlatch</b>						
—	632F	630	RHR	Less Cylinder	886243	5
<b>Dummy</b>						
—	634F	630	RHR	Less Cylinder	886244	5

Note: See page 25 for cylinder options

\*Units are field reversible-

Fax 877-888-2772, email [flashship@assaabloy.com](mailto:flashship@assaabloy.com) or use  
Online Order Entry at [www.assaabloydss.com/extranet](http://www.assaabloydss.com/extranet) by clicking the FLASHship™ icon

Note: FLASHship™ reserves the right to limit quantities.

Copyright © 2015-2016, Yale Security Inc., an ASSA ABLOY Group company. All rights reserved.  
Reproduction in whole or in part without the express written permission of Yale Security Inc. is prohibited.



1109 x626



SDA16



## M200 Series: Removable Mullions

Model #	Description	FLASHship™ #	Approx. Wt. Each (Lbs)
<b>For 8 Ft. Openings</b>			
M200-8	Complete for Panic Exits	885202	37
M200F-8	Complete for Fire Exits	885203	37

## Cylinders for Exit Device Trims and Mullions

Model #	Description	Key Section	Finish	Collar Size Included	FLASHship™ #	Approx. Wt. Each (Lbs)
<b>Rim Cylinders</b>						
1109	6-Pin, Keyed Random	PARA	613E	1765.250	885344	0.4
1109	6-Pin, Keyed Random	PARA	626	1765.250	885003	0.4
2109	6-Pin, Schlage® Keyed Random	C	613E	1765.250	885345	0.4
2109	6-Pin, Schlage® Keyed Random	C	626	1765.250	885004	0.4
<b>Rim Housings</b>						
K680 x 1-3/8"	SFIC Housing Only, Less Core	—	613E	1765.375	885346	0.5
K680 x 1-3/8"	SFIC Housing Only, Less Core	—	626	1765.375	885005	0.5

## Miscellaneous Hardware for Exit Devices

Model #	Description	Finish	FLASHship™ #	Approx. Wt. Each (Lbs)
<b>Extension Rods - For All Exit Device Series</b>				
2010-12	12" (305mm) Length	630	885204	1
2010-12	12" (305mm) Length	689	885205	1
2010-12	12" (305mm) Length	695	885306	1
<b>Shim Kits for 2100 Series</b>				
223	For 2100(F) rim	693	886027	1
224	For 2110(F) SVR	693	886028	1
<b>Strike Pack</b>				
793	Optional for double door applications	—	886029	1

## Stand-Alone Door Alarm

Model #	Description	Finish	FLASHship™ #	Approx. Wt. Each (Lbs)
SDA16	Battery-operated door alarm	—	886030	3

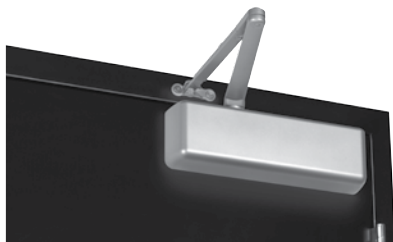
Fax 877-888-2772, email [flashship@assaabloy.com](mailto:flashship@assaabloy.com) or use  
Online Order Entry at [www.assaabloydss.com/extranet](http://www.assaabloydss.com/extranet) by clicking the FLASHship™ icon

Note: FLASHship™ reserves the right to limit quantities.

Copyright © 2015-2016, Yale Security Inc., an ASSA ABLOY Group company. All rights reserved.  
Reproduction in whole or in part without the express written permission of Yale Security Inc. is prohibited.

An ASSA ABLOY Group brand

**ASSA ABLOY**



5801 Non-Hold Open



5821T Hold Open

## 5800 Series: Cast Iron

Model #	Description	Finish	FLASHship™ #	Approx. Wt. Each (Lbs)
<b>Non-Hold Open With Sleeve Nuts</b>				
5801 x SN	Multi-Size 1-6	689	885230	12
5801 x SN	Multi-Size 1-6	690	885351	12
<b>Non-Hold Open, With Sleeve Nuts</b>				
5821 x SN	Stop Only, Multi-Size 1-6	689	885232	14
5821 x SN	Stop Only, Multi-Size 1-6	690	885352	14
<b>Hold Open With Sleeve Nuts</b>				
5811 x SN	Multi-Size 1-6	689	885231	12
5811 x SN	Multi-Size 1-6	690	885353	12
<b>Hold Open, With Sleeve Nuts</b>				
5821T x SN	Holder/Stop Thumbturn, Multi-Size 1-6	689	885233	14
5821T x SN	Holder/Stop Thumbturn, Multi-Size 1-6	690	885354	14
<b>Accessories</b>				
SN-134	Sleeve Nut Pkg., 1-3/4" Door	689	885225	0.2
SN-134	Sleeve Nut Pkg., 1-3/4" Door	690	885355	0.2
5800RDP	Narrow Frame Drop Plate, Regular Arm	689	886031	4
5800RDP	Narrow Frame Drop Plate, Regular Arm	690	886032	4
5800PDP	Narrow Top Rail Drop Plate, Parallel Arm	689	886033	4
5800PDP	Narrow Top Rail Drop Plate, Parallel Arm	690	886034	4

### Notes:

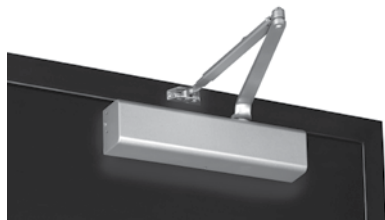
- Closers tri-packed
- Case quantity = 4
- SN-134 = 4 per pack; supplied standard with all 5800 door closers
- FLASHship™ reserves the right to limit quantities
- For heavy-duty parallel rigid arm applications, specify 5821 or 5821T, stop is removable

Fax 877-888-2772, email [flashship@assaabloy.com](mailto:flashship@assaabloy.com) or use Online Order Entry at [www.assaabloydss.com/extranet](http://www.assaabloydss.com/extranet) by clicking the FLASHship™ icon

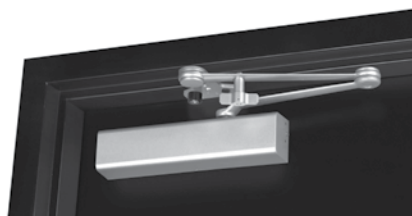
Note: FLASHship™ reserves the right to limit quantities.

Copyright © 2015-2016, Yale Security Inc., an ASSA ABLOY Group company. All rights reserved. Reproduction in whole or in part without the express written permission of Yale Security Inc. is prohibited.





2701 Non-Hold Open



2721T Hold Open

## 2700 Series: Architectural

Model #	Description	Finish	FLASHship™ #	Approx. Wt. Each (Lbs)
<b>Non-Hold Open, With Sleeve Nuts</b>				
2701	Multi-Size 1-6	689	885191	6.5
2701	Multi-Size 1-6	690	885347	6.5
<b>Non-Hold Open, With Sleeve Nuts</b>				
2721 x SN	Stop Only, Multi-Size 1-6	689	885193	7.75
2721 x SN	Stop Only, Multi-Size 1-6	690	885348	7.75
<b>Hold Open, With Sleeve Nuts</b>				
2711	Multi-Size 1-6	689	885192	6.5
2711	Multi-Size 1-6	690	885349	6.5
<b>Hold Open, With Sleeve Nuts</b>				
2721T x SN	Holder/Stop Thumbturn, Multi-Size 1-6	689	885194	7.75
2721T x SN	Holder/Stop Thumbturn, Multi-Size 1-6	690	885350	7.75
<b>Accessories</b>				
SN-134	Sleeve Nut Pkg., 1-3/4" Door	689	885225	0.2
SN-134	Sleeve Nut Pkg., 1-3/4" Door	690	885355	0.2
3158	Exposed-Back/Narrow Top Rail Drop Plate	689	886035	2
3158	Exposed-Back/Narrow Top Rail Drop Plate	690	886036	2
3148	Drop Plate	689	886088	2
3148	Drop Plate	690	886089	2

**Notes:**

- Closers tri-packed
- Case quantity:  
2701 = 6  
2711, 2721, 2721T = 4
- SN-134 = 4 per pack; supplied standard with all 2700 door closers
- FLASHship™ reserves the right to limit quantities
- For heavy-duty parallel rigid arm applications, specify 2721 or 2721T, stop is removable

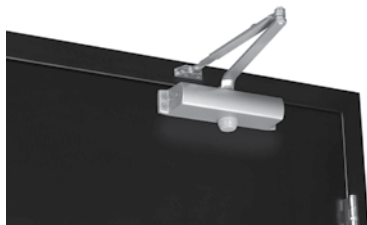
Fax 877-888-2772, email [flashship@assaabloy.com](mailto:flashship@assaabloy.com) or use  
Online Order Entry at [www.assaabloydss.com/extranet](http://www.assaabloydss.com/extranet) by clicking the FLASHship™ icon

Note: FLASHship™ reserves the right to limit quantities.

Copyright © 2015-2016, Yale Security Inc., an ASSA ABLOY Group company. All rights reserved.  
Reproduction in whole or in part without the express written permission of Yale Security Inc. is prohibited.

An ASSA ABLOY Group brand

**ASSA ABLOY**



1101BF Non-Hold Open

## 1100 Series: Industrial

Model #	Description	Finish	FLASHship™ #	Approx. Wt. Each (Lbs)
<b>Non-Hold Open With Sleeve Nuts</b>				
1101BF	Multi-Size 1-4	689	885227	6
1101BF	Multi-Size 1-4	690	885357	6
1101BFCOV	Multi-Size 1-4, with Cover	689	886093	6
1101BFCOV	Multi-Size 1-4, with Cover	690	886094	6
1104BC x SNB	Multi-Size 1-4	689	886104	6
1104BC x SNB	Multi-Size 1-4	690	886105	6
<b>Hold Open With Sleeve Nuts</b>				
1111BF	Multi-Size 1-4	689	885228	8
1111BF	Multi-Size 1-4	690	885358	8
<b>Accessories</b>				
1100COV	Optional Cover for 1100 Series	689	885229	0.5
1100COV	Optional Cover for 1100 Series	690	885359	0.5
SN-134	Sleeve Nut Pkg., 1-3/4" Door	689	885225	0.2
SN-134	Sleeve Nut Pkg., 1-3/4" Door	690	885355	0.2

## Notes:

- Closers tri-packed
- Case quantity:  
1101BF = 6  
1111BF = 4
- SN-134 = 4 per pack; supplied standard with all 1100 door closers
- FLASHship™ reserves the right to limit quantities.

Fax 877-888-2772, email [flashship@assaabloy.com](mailto:flashship@assaabloy.com) or use Online Order Entry at [www.assaabloydss.com/extranet](http://www.assaabloydss.com/extranet) by clicking the FLASHship™ icon

*Note: FLASHship™ reserves the right to limit quantities.*

Copyright © 2015-2016, Yale Security Inc., an ASSA ABLOY Group company. All rights reserved. Reproduction in whole or in part without the express written permission of Yale Security Inc. is prohibited.



Augusta - AU

Design	Model #	Finish	Strike	Cylinder	FLASHship™ #	Approx. Wt. Each (Lbs)
<b>With Cylinder Override</b>						
AU	E4761LN	626	497 ANSI	1802, 6-Pin, PARA Keyed Random	885236	7.2
AU	E4761LN	626	497 ANSI	2802, 6-Pin, Schlage® C Keyed Random	885237	7.2
<b>With Cylinder Override (Small Format Interchangeable Core)</b>						
BAU	E4761LN	626	497 ANSI	Less Core	885238	7.2

Fax 877-888-2772, email [flashship@assaabloy.com](mailto:flashship@assaabloy.com) or use  
 Online Order Entry at [www.assaabloydss.com/extranet](http://www.assaabloydss.com/extranet) by clicking the FLASHship™ icon  
*Note: FLASHship™ reserves the right to limit quantities.*

Copyright © 2015-2016, Yale Security Inc., an ASSA ABLOY Group company. All rights reserved.  
 Reproduction in whole or in part without the express written permission of Yale Security Inc. is prohibited.

An ASSA ABLOY Group brand

**ASSA ABLOY**



McKinney



**ASSA ABLOY**

The global leader in  
door opening solutions

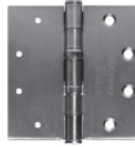
Fax 877-888-2772, email [flashship@assaabloy.com](mailto:flashship@assaabloy.com) or use  
Online Order Entry at [www.assaabloydss.com/extranet](http://www.assaabloydss.com/extranet) by clicking the FLASHship™ icon

*Note: FLASHship™ reserves the right to limit quantities.*

Copyright © 2015-2016, McKinney Products Company, an ASSA ABLOY Group company. All rights reserved.  
Reproduction in whole or in part without the express written permission of McKinney Products Company is prohibited.



1502 Spring Hinge



TA2714 Five Knuckle Hinge

Model #	Size (in.)	Options	Finish	FLASHship™ #	Approx. Wt. Each (Lbs)
<b>Spring Hinges - Standard Weight</b>					
1502	4-1/2" x 4-1/2"	-	US26D	885496	1
<b>3 Knuckle Hinges - Heavy Weight</b>					
TA786	4-1/2" x 4-1/2"	-	US26D	885521	2
<b>3 Knuckle Hinges - Standard Weight</b>					
TA714	4-1/2" x 4-1/2"	-	US26D	885520	1
<b>5 Knuckle Hinges - Standard Weight</b>					
TA2314	4-1/2" x 4-1/2"	-	US26D	885513	1
TA2314	4-1/2" x 4-1/2"	NRP	US26D	885514	1
TA2314	4-1/2" x 4-1/2"	-	US32D	885515	1
TA2314	4-1/2" x 4-1/2"	NRP	US32D	885516	1
T2714	4-1/2" x 4-1/2"	-	US26D	885498	1
TA2714	4-1/2" x 4-1/2"	-	USP	885499	1
TA2714	4-1/2" x 4-1/2"	-	US3	885500	1
TA2714	4-1/2" x 4-1/2"	-	US15	885502	1
TA2714	4-1/2" x 4-1/2"	-	US26	885503	1
TA2714	4-1/2" x 4-1/2"	-	US26D	885504	1
TA2714	4-1/2" x 4-1/2"	-	US10	885501	1
TA2714	4-1/2" x 4-1/2"	NRP	US26D	885505	1
TB2714	4-1/2" x 4-1/2"	-	US26D	885508	1
TA2714	5" x 4-1/2"	-	US26D	885509	1
<b>5 Knuckle Hinges - Heavy Weight</b>					
T4A3786	4-1/2" x 4-1/2"	-	US26D	885510	1.5
T4A3786	4-1/2" x 4-1/2"	NRP	US26D	885511	1.5
T4A3786	5" x 4-1/2"	-	US26D	885512	2
T4A3386	4-1/2" x 4-1/2"	-	US32D	885517	1.5
T4A3386	4-1/2" x 4-1/2"	NRP	US32D	885518	1.5
T4A3386	5" x 4-1/2"	NRP	US32D	885519	2

NRP=Non Removable Pin

Fax 877-888-2772, email [flashship@assaabloy.com](mailto:flashship@assaabloy.com) or use  
Online Order Entry at [www.assaabloydss.com/extranet](http://www.assaabloydss.com/extranet) by clicking the FLASHship™ icon  
Note: FLASHship™ reserves the right to limit quantities.

Copyright © 2015-2016, McKinney Products Company, an ASSA ABLOY Group company. All rights reserved.  
Reproduction in whole or in part without the express written permission of McKinney Products Company is prohibited.

**ASSA ABLOY**

The global leader in  
door opening solutions



MacPro® MP79 Hinge

Model #	Size (in.)	Options	Finish	FLASHship™ #	Approx. Wt. Each (Lbs)
<b>MacPro® Hinges</b>					
MPB79	4-1/2" x 4-1/2"	-	US26D	885527	1
MPB79	4-1/2" x 4-1/2"	NRP	US26D	885528	1
MPB79	4-1/2" x 4-1/2"		USP	885529	1
MPB79	4-1/2" x 4-1/2"	-	10BE	886095	1
MPB79	4-1/2" x 4-1/2"	NRP	10BE	886096	1
MPB91	4-1/2" x 4-1/2"	-	US32D	885530	1
MPB91	4-1/2" x 4-1/2"	NRP	US32D	885531	1
MP79	4-1/2" x 4-1/2"	-	US26D	885532	1.5
MP79	4-1/2" x 4-1/2"	-	US10BE	886097	1.5
MPB68	4-1/2" x 4-1/2"	-	US26D	885533	1.5
MPB68	4-1/2" x 4-1/2"	NRP	US26D	885534	1.5
MPB99	4-1/2" x 4-1/2"	-	US32D	885535	1.5
MPB99	4-1/2" x 4-1/2"	NRP	US32D	885536	1.5
MPS60	4-1/2" x 4-1/2"	-	US26D	885537	1

\*Available for order 7/27/15

# ASSA ABLOY

The global leader in  
door opening solutions

Fax 877-888-2772, email [flashship@assaabloy.com](mailto:flashship@assaabloy.com) or use  
Online Order Entry at [www.assaabloydss.com/extranet](http://www.assaabloydss.com/extranet) by clicking the FLASHship™ icon

*Note: FLASHship™ reserves the right to limit quantities.*

Copyright © 2015-2016, McKinney Products Company, an ASSA ABLOY Group company. All rights reserved.  
Reproduction in whole or in part without the express written permission of McKinney Products Company is prohibited.





ElectroLynx® Hinge

Model #	Size (in.)	Options	Finish	FLASHship™ #	Approx. Wt. Each (Lbs)
<b>ElectroLynx® Hinges</b>					
TA2714	4-1/2" x 4-1/2"	QC4	US26D	885522	1
TA2714	4-1/2" x 4-1/2"	QC8	US26D	885524	1
TA2714	4-1/2" x 4-1/2"	QC12	US26D	885526	1
T4A3786	4-1/2" x 4-1/2"	QC4	US26D	885523	1.5
T4A3786	4-1/2" x 4-1/2"	QC8	US26D	885525	1.5
<b>ElectroLynx® Cables</b>					
QC-C003	3"	12 Wire 22AWG	-	885538	0.1
QC-C200	26"	12 Wire 22AWG	-	885539	0.1
QC-C206	32"	12 Wire 22AWG	-	885540	0.1
QC-C300	38"	12 Wire 22AWG	-	885541	0.1
QC-C306	44"	12 Wire 22AWG	-	885542	0.2
QC-C400	50"	12 Wire 22AWG	-	885543	0.2
QC-C1500	15'2"	12 Wire 22AWG	-	885544	0.7
QC-C1500P	15'2'	12 Wire 22AWG	-	885545	0.7

\*Available for order 7/27/15

Fax 877-888-2772, email [flashship@assaabloy.com](mailto:flashship@assaabloy.com) or use  
Online Order Entry at [www.assaabloydss.com/extranet](http://www.assaabloydss.com/extranet) by clicking the FLASHship™ icon  
Note: FLASHship™ reserves the right to limit quantities.

Copyright © 2015-2016, McKinney Products Company, an ASSA ABLOY Group company. All rights reserved.  
Reproduction in whole or in part without the express written permission of McKinney Products Company is prohibited.

**ASSA ABLOY**

The global leader in  
door opening solutions



PEMKO

**ASSA ABLOY**

The global leader in  
door opening solutions

Fax 877-888-2772, email [flashship@assaabloy.com](mailto:flashship@assaabloy.com) or use  
Online Order Entry at [www.assaabloydss.com/extranet](http://www.assaabloydss.com/extranet) by clicking the FLASHship™ icon

*Note: FLASHship™ reserves the right to limit quantities.*

Copyright © 2015-2016, Pemko Manufacturing Co., an ASSA ABLOY Group company. All rights reserved.  
Reproduction in whole or in part without the express written permission of Pemko Manufacturing Co. is prohibited.

**Markar PEMKO***Markar 300 Series Hinges*

Model #	Description	FLASHship™ #	Approx. Wt. Each (Lbs)
<b>14 Gauge Stainless Steel Pin &amp; Barrel Continuous Hinges</b>			
FM300-83	Markar Edge Mount Pin & Barrel Hinge, Stainless Steel, 83-1/8" Long	885546	12.9
FM300-95	Markar Edge Mount Pin & Barrel Hinge, Stainless Steel, 95" Long	885547	14.8
FM300-79	Markar Edge Mount Pin & Barrel Hinge, Stainless Steel, 79-3/16" Long	885548	12.5
HG305-83	Markar Edge Mount Pin & Barrel Hinge Guard, Double Return, Stainless Steel, 83-1/8" Long	885549	13.5
HG305-95	Markar Edge Mount Pin & Barrel Hinge Guard, Double Return, Stainless Steel, 95" Long	885550	15.5
HG315-83	Markar Edge Mount Pin & Barrel Hinge Guard, Single Return, Stainless Steel, 83-1/8" Long	885551	13.3
HG315-95	Markar Edge Mount Pin & Barrel Hinge Guard, Single Return, Stainless Steel, 95" Long	885552	15.3

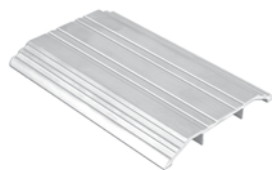
Fax 877-888-2772, email [flashship@assaabloy.com](mailto:flashship@assaabloy.com) or use  
 Online Order Entry at [www.assaabloydss.com/extranet](http://www.assaabloydss.com/extranet) by clicking the FLASHship™ icon  
*Note: FLASHship™ reserves the right to limit quantities.*

Copyright © 2015-2016, Pemko Manufacturing Co., an ASSA ABLOY Group company. All rights reserved.  
 Reproduction in whole or in part without the express written permission of Pemko Manufacturing Co. is prohibited.

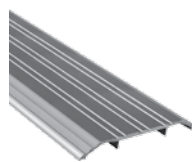
**ASSA ABLOY**

The global leader in  
 door opening solutions

PEMKO



170A Threshold



171A Threshold

Model #	Description	FLASHship™ #	Approx. Wt. Each (Lbs)
<b>Thresholds</b>			
151A36	3" Flat Saddle Threshold, 1/4" High, 36" Long	885553	1.4
154A36	5" Flat Saddle Threshold, 1/4" High, 36" Long	885554	2.8
170A36	4" Fluted Saddle Threshold, 1/2" High, 36" Long	885555	2.1
170A72	4" Fluted Saddle Threshold, 1/2" High, 72" Long	885558	4.1
170D36	4" Fluted Saddle Threshold, 1/2" High, 36" Long, Dark Bronze	885559	2.1
170A48	4" Fluted Saddle Threshold, 1/2" High, 48" Long	885557	2.8
170A36WS/PA	4" Fluted Saddle Threshold, 1/2" High, 36" Long with Wood Screws and Plastic Anchors	885556	2.1
171A36	5" Fluted Saddle Threshold, 1/2" High, 36" Long	885561	2.7
171A36WS/PA	5" Fluted Saddle Threshold, 1/2" High, 36" Long , With Wood Screws and Plastic Anchors	885562	2.7
171A48	5" Fluted Saddle Threshold, 1/2" High, 48" Long	885563	3.6
171A72	5" Fluted Saddle Threshold, 1/2" High, 72" Long	885564	5.4
171D36	5" Fluted Saddle Threshold, 1/2" High, 36" Long, Dark Bronze	885565	2.7
1715A36	5" Heavy Duty Saddle Threshold, 1/2" High, 36" Long	885560	5.2
172A36	6" Fluted Saddle Threshold, 1/2" High, 36" Long	885566	3.1
172A48	6" Fluted Saddle Threshold, 1/2" High, 48" Long	885567	4.1
172A72	6" Fluted Saddle Threshold, 1/2" High, 72" Long	885568	5.5
172D36	6" Fluted Saddle Threshold, 1/2" High, 36" Long, Dark Bronze	885569	3.1
2548A36	8" Fluted Saddle Threshold, 1/2" High, 36" Long	885601	4
2548A72	8" Fluted Saddle Threshold, 1/2" High, 72" Long	885602	8
270A36	4" Fluted Saddle Threshold, 1/4" High, 36" Long	885603	2
270A72	4" Fluted Saddle Threshold, 1/4" High, 72" Long	885604	3.9
271A36	5" Fluted Saddle Threshold, 1/4" High, 36" Long	885606	2.5
271A48	5" Fluted Saddle Threshold, 1/4" High, 48" Long	885608	3.3
271A72	5" Fluted Saddle Threshold, 1/4" High, 72" Long	885609	5
271D36	5" Fluted Saddle Threshold, 1/4" High, 36" Long, Dark Bronze	885610	2.5
272A36	6" Fluted Saddle Threshold, 1/4" High, 36" Long	885611	3
272A48	6" Fluted Saddle Threshold, 1/4" High, 48" Long	885613	4
272A72	6" Fluted Saddle Threshold, 1/4" High, 72" Long	885614	6.1
272D36	6" Fluted Saddle Threshold, 1/4" High, 36" Long, Dark Bronze	885615	3
2748A36	8" Fluted Saddle Threshold, 1/4" High, 36" Long	885616	3.9
2748A72	8" Fluted Saddle Threshold, 1/4" High, 72" Long	885617	7.8
2005AT36	5" Latching Panic Threshold, 1/2" High, 36" Long with TPE Seal	885584	2.5
2005AT48	5" Latching Panic Threshold, 1/2" High, 48" Long with TPE Seal	885585	3.3
2005AT72	5" Latching Panic Threshold, 1/2" High, 72" Long with TPE Seal	885586	5

ASSA ABLOY

The global leader in  
door opening solutionsFax 877-888-2772, email [flashship@assaabloy.com](mailto:flashship@assaabloy.com) or use  
Online Order Entry at [www.assaabloydss.com/extranet](http://www.assaabloydss.com/extranet) by clicking the FLASHship™ icon*Note: FLASHship™ reserves the right to limit quantities.*Copyright © 2015-2016, Pemko Manufacturing Co., an ASSA ABLOY Group company. All rights reserved.  
Reproduction in whole or in part without the express written permission of Pemko Manufacturing Co. is prohibited.





210AV Door Shoe



303AS Jamb Set

Model #	Description	FLASHship™ #	Approx. Wt. Each (Lbs)
<b>Thresholds (Cont.)</b>			
2008STCQ380A36	4" Acoustic Threshold, 1/2" High, 36" Long with Encased Foam Seal	885587	1.7
252X3AFG36	5-1/8" Thermal Barrier Saddle Threshold, 1/2" High, 36" Long	885600	3.3
<b>Door Shoes</b>			
210AV36	Aluminum L Shape Door Shoe, Drip Ledge, Vinyl Bottom Seal, 36"	885588	1
210DV36	Dark, Aluminum L Shape Door Shoe, Drip Ledge, Vinyl Bottom Seal, 36"	885589	1
210DV48	Dark, Aluminum L Shape Door Shoe, Drip Ledge, Vinyl Bottom Seal, 48"	885590	1.2
216AV36	Aluminum U Shape Door Shoe, Drip Ledge, Vinyl Bottom Seal, 1-3/4" Door, 36"	885591	1.2
216DV36	Dark, Aluminum U Shape Door Shoe, Drip Ledge, Vinyl Bottom Seal, 1-3/4" Door, 36"	885592	1.2
216PWW36	Painted White, Aluminum U Shape Door Shoe, Drip Ledge, Vinyl Bottom Seal, 1-3/4" Door, 36"	885593	1.2
2173AV36	Aluminum U Shape Door Shoe, Notched Vinyl Bottom Seal, 1-3/4" Door, 36"	885595	1
2173DV36	Dark, Aluminum U Shape Door Shoe, Notched Vinyl Bottom Seal, 1-3/4" Door, 36"	885596	1
221AV36	Aluminum U Shape 3" Door Shoe/Kickplate, Vinyl Bottom Seal, 1-3/4" Door, 36"	885597	3.1
2343AV36	Aluminum Door Shoe, Notched Vinyl Bottom Seal, 1-3/16" Wide, 36"	885598	1
<b>Jamb Sets</b>			
303AS3684	Silicone Perimeter Door Seal Kit, Aluminum Channel, 36" x 84" Opening	885629	1.2
303AS7284	Silicone Perimeter Door Seal Kit, Aluminum Channel, 72" x 84" Opening	885630	1.4
303DS3684	Silicone Perimeter Door Seal Kit, Dark Bronze Aluminum Channel, 36" x 84" Opening	885634	1.2
303AV3684	Vinyl Perimeter Door Seal Kit, Aluminum Channel, 36" x 84" Opening	885631	1.2
303AV3684TK	Vinyl Perimeter Door Seal Kit w/Tek Screws, Aluminum Channel, 36" x 84" Opening	885632	1.2
303DV3684	Vinyl Perimeter Door Seal Kit, Dark Bronze Aluminum Channel, 36" x 84" Opening	885635	1.2
303AV7284	Vinyl Perimeter Door Seal Kit, Aluminum Channel, 72" x 84" Opening	885633	1.4
305CR3684	Perimeter Gasketing, Clear Aluminum Black Sponge EPDM Insert, 36" x 84" Opening	885638	1.2
305CN84	Split Astragal/Meeting Stile Seal, Clear Aluminum, Gray EPDM Insert, 84"	885636	0.5
305CN96	Split Astragal/Meeting Stile Seal, Clear Aluminum, Gray EPDM Insert, 96"	885637	0.6
319CN3684	Perimeter Gasketing, Clear Anodized Aluminum with Black EPDM insert, 36" x 84" Opening	885645	1.8
332CR3684	Perimeter Gasketing, Clear Anodized Aluminum with Black Sponge EPDM insert, 36" x 84" Opening	885646	1.4
<b>Brush Door Sweeps/Seal</b>			
18061CNB36	Brush Door Sweep, 3/4" Clear Aluminum Channel, 5/8" Brush, 36" Long	885571	0.4
18061CNB48	Brush Door Sweep, 3/4" Clear Aluminum Channel, 5/8" Brush, 48" Long	885572	0.5
18061CNB84	Door Seal, 3/4" Clear Aluminum Channel, 5/8" Brush, 84" Long	885573	0.9
18061CNB96	Door Seal, 3/4" Clear Aluminum Channel, 5/8" Brush, 96" Long	885574	1.2
18061DNB36	Brush Door Sweep, 3/4" Dark Bronze Aluminum Channel, 5/8" Brush, 36" Long	885575	0.4

Fax 877-888-2772, email [flashship@assaabloy.com](mailto:flashship@assaabloy.com) or use  
 Online Order Entry at [www.assaabloydss.com/extranet](http://www.assaabloydss.com/extranet) by clicking the FLASHship™ icon  
 Note: FLASHship™ reserves the right to limit quantities.

Copyright © 2015-2016, Pemko Manufacturing Co., an ASSA ABLOY Group company. All rights reserved.  
 Reproduction in whole or in part without the express written permission of Pemko Manufacturing Co. is prohibited.

**ASSA ABLOY**

The global leader in  
door opening solutions

PEMKO



18061DNB Brush Door Sweep



345DV Door Bottom Sweep

Model #	Description	FLASHship™ #	Approx. Wt. Each (Lbs)
<b>Brush Door Sweeps/Seal (Cont.)</b>			
18061DNB84	Door Seal, 3/4" Dark Bronze Aluminum Channel, 5/8" Brush, 84" Long	885576	0.9
18062CNB36	Brush Door Sweep, 7/8" Clear Aluminum Channel, 5/8" Brush, 36" Long	885577	0.6
18062CNB48	Brush Door Sweep, 7/8" Clear Aluminum Channel, 5/8" Brush, 48" Long	885578	0.5
18062CNB84	Door Seal, 7/8" Clear Aluminum Channel, 5/8" Brush, 84" Long	885579	0.9
18062DNB36	Brush Door Sweep, 7/8" Dark Bronze Aluminum Channel, 5/8" Brush, 36" Long	885580	0.5
18100CNB36	Brush Door Sweep, 7/8" Clear Aluminum Channel, 1" Brush, 36" Long	885581	0.5
18100CNB48	Brush Door Sweep, 7/8" Clear Aluminum Channel, 1" Brush, 48" Long	885582	0.7
18137CNB36	Brush Door Sweep, 7/8" Clear Aluminum Channel, 1-3/8" Brush, 36" Long	885583	0.5
29324CNB84	Snap Cover W/S, Clear Anodized Aluminum, Gray Nylon Brush, 84"	885625	1.5
29326CNB36	Snap Cover Weatherstrip, Clear Anodized Aluminum, 1/4" x 7/8", with 5/8" Gray Nylon Brush, 36"	885626	0.8
315CN36	Neoprene Door Sweep, 1-1/4" Clear Aluminum Channel, 7/16" Neoprene, 36" Long	885639	0.4
315CN36TK	Neoprene Door Sweep w/Tek Screws, 1-1/4" Clear Aluminum Channel, 7/16" Neoprene, 36" Long	885640	0.4
315CN42	Neoprene Door Sweep, 1-1/4" Clear Aluminum Channel, 7/16" Neoprene, 42" Long	885641	0.5
315CN48	Neoprene Door Sweep, 1-1/4" Clear Aluminum Channel, 7/16" Neoprene, 48" Long	885642	1
315DN36	Neoprene Door Sweep, 1-1/4" Dark Bronze Aluminum Channel, 7/16" Neoprene, 36" Long	885643	0.4
315DN48	Neoprene Door Sweep, 1-1/4" Dark Bronze Aluminum Channel, 7/16" Neoprene, 48" Long	885644	1
307AV36	Door Bottom Sweep, 7/8" Gray Aluminum Channel, 1" Vinyl, 36" Long	886120	
307AV48	Door Bottom Sweep, 7/8" Gray Aluminum Channel, 1" Vinyl, 36" Long	886121	
345AV36	Door Bottom Sweep w/Rain Drip, Mill Finish Aluminum, Gray Vinyl Insert, 36" Long	885652	0.5
345AV48	Door Bottom Sweep w/Rain Drip, Mill Finish Aluminum, Gray Vinyl Insert, 48" Long	885653	0.6
345DV36	Door Bottom Sweep w/Rain Drip, Dark Bronze Aluminum, Gray Vinyl Insert, 36" Long	885655	0.5
345ANB36	Door Bottom Sweep w/Rain Drip, Mill Finish Aluminum, Nylon Brush Insert, 36" Long	885650	0.5
345A36	Door Bottom Rain Drip, Mill Finish Aluminum, 36" Long	885649	0.5
345D36	Door Bottom Rain Drip, Dark Bronze Aluminum, 36" Long	885654	0.5
345ANB48	Door Bottom Sweep with Rain Drip, Mill Finish Aluminum, Nylon Brush Insert, 48" Long	885651	0.6
3452CNB36	Door Bottom Sweep with Rain Drip, Clear Aluminum, Nylon Brush Insert, 36" Long	885648	0.5
3452AV36	Door Bottom Sweep with Rain Drip, Mill Finish Aluminum, Vinyl Insert, 36" Long	885647	0.5
<b>Overlapping Astragals</b>			
357SP84	Overlapping Astragals, 1/8" Thick, 2" Wide, Galvannealed Steel (11 ga), 84" Long	885661	5.9
357C84	Overlapping Astragals, 1/8" Thick, 2" Wide, Clear Anodized Aluminum, 84" Long	885659	2.1
357SP96	Overlapping Astragals, 1/8" Thick, 2" Wide, Galvannealed Steel (11 ga), 96" Long	885662	6.8
357SS84	Overlapping Astragals, 1/8" Thick, 2" Wide, Stainless Steel (11 ga), 84" Long	885663	9
357C96	Overlapping Astragals, 1/8" Thick, 2" Wide, Clear Anodized Aluminum, 96" Long	885660	2.4

ASSA ABLOY

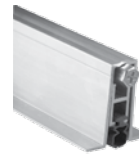
The global leader in  
door opening solutionsFax 877-888-2772, email [flashship@assaabloy.com](mailto:flashship@assaabloy.com) or use  
Online Order Entry at [www.assaabloydss.com/extranet](http://www.assaabloydss.com/extranet) by clicking the FLASHship™ icon

Note: FLASHship™ reserves the right to limit quantities.

Copyright © 2015-2016, Pemko Manufacturing Co., an ASSA ABLOY Group company. All rights reserved.  
Reproduction in whole or in part without the express written permission of Pemko Manufacturing Co. is prohibited.



346C Rain Drip



411APKL Automatic Door Bottom

Model #	Description	FLASHship™ #	Approx. Wt. Each (Lbs)
<b>Meeting Stile Split Astragal</b>			
18041CNB84	Brush Meeting Stile Gasketing, 3/4" Clear Aluminum Channel, 3/8" Exposed Brush, 1 piece @84"	885570	0.9
29310CS84	Straight Snap-Cover Meeting Stile, Clear Anodized Aluminum, Silicone Seal, 1 piece @84"	885623	1.5
29324CNB84	Snap Cover W/S, Clear Anodized Aluminum, 1/4" x 7/8", with 3/8" Gray Nylon Brush, 1 piece @84"	885625	1.5
369AP84	Meeting Stile Mill Aluminum Pile Insert, 84"	885664	0.3
<b>Rain Drip</b>			
346C40	Door Top Rain Drip, 2-1/2" Clear Aluminum Projection, 40" Long	885656	1.2
346C52	Door Top Rain Drip, 2-1/2" Clear Aluminum Projection, 52" Long	885657	1.5
346C76	Door Top Rain Drip, 2-1/2" Clear Aluminum Projection, 76" Long	885658	2.2
<b>Automatic Door Bottoms</b>			
411APKL36	Full Mortised Auto Door Bottom, 1-3/8" x 9/16" Aluminum Channel, PemkoPrene™ Insert, Low Closing Force	885667	1.5
411ARL32	Full Mortised Auto Door Bottom, Mill Finish Aluminum with Black Sponge EPDM Insert, 32" Long	885668	1.3
411ARL36	Full Mortised Auto Door Bottom, 1-3/8" x 9/16" Aluminum Channel, Sponge EPDM Insert, Low Closing Force	885669	1.5
411ANBL36	Full Mortised Auto Door Bottom, Mill Finish Aluminum w/ Black Nylon Brush Insert, 36" Long	885666	1.5
434APKL36	Full Mortised Auto Door Bottom, 1-5/16" x 27/32" Aluminum Channel, PemkoPrene™ Insert	885673	1.6
434ARL36	Full Mortised Auto Door Bottom, Mill Finish Aluminum with Black Sponge EPDM Insert, 36" Long	885674	2.5
4131CRL36	Surface and Semi Mortised Auto Door Bottom, Clear Aluminum, Black Sponge EPDM Insert, 36" Long	885671	1.5
4131CPKL36	Surface and Semi Mortised Auto Door Bottom, Clear Aluminum, Black PemkoPrene™ Insert, 36" Long	885670	1.5
4131DRL36	Surface and Semi Mortised Auto Door Bottom, Dark Bronze Aluminum, Black Sponge EPDM Insert, 36" Long	885672	1.5
PDB411AE36	Acoustic Automatic Door Bottom, Full Mortised, Mill Finish Aluminum, Black EPDM Insert, 36" Long	885695	1.5
PDB411AE48	Acoustic Automatic Door Bottom, Full Mortised, Mill Finish Aluminum, Black EPDM Insert, 48" Long	885697	3
PDB4131DE36	Acoustic Automatic Door Bottom, Semi Mortised, Dark Bronze Anodized Aluminum, Black EPDM Insert, 36" Long	885699	1.5
<b>Aluminum Geared Continuous Hinges</b>			
CFM83HD1	Continuous Geared Hinge, Full Mortise, Clear Aluminum, Heavy Duty 83"	885677	6.3
CFM83SLF-HD1	Continuous Geared Hinge, Full Mortise, Short Leaf Flush, Clear Aluminum, Heavy Duty 83"	885678	6

Fax 877-888-2772, email [flashship@assaabloy.com](mailto:flashship@assaabloy.com) or use  
 Online Order Entry at [www.assaabloydss.com/extranet](http://www.assaabloydss.com/extranet) by clicking the FLASHship™ icon  
 Note: FLASHship™ reserves the right to limit quantities.

Copyright © 2015-2016, Pemko Manufacturing Co., an ASSA ABLOY Group company. All rights reserved.  
 Reproduction in whole or in part without the express written permission of Pemko Manufacturing Co. is prohibited.

**ASSA ABLOY**

The global leader in  
door opening solutions

**PEMKO**



CFM Continuous Geared Hinges



CFS-CP Continuous Geared Hinges

Model #	Description	FLASHship™ #	Approx. Wt. Each (Lbs)
<b>Aluminum Geared Continuous Hinges (Cont.)</b>			
CFM83SLI-HD1	Continuous Geared Hinge, Full Mortise, Short Leaf Inset, Clear Aluminum, Heavy Duty 83"	885679	5.5
CFM95HD1	Continuous Geared Hinge, Full Mortise, Clear Aluminum, Heavy Duty 95"	885680	7.2
CFM95SLF-HD1	Continuous Geared Hinge, Full Mortise, Short Leaf Flush, Clear Aluminum, Heavy Duty 95"	885681	7.2
CFS83	Continuous Geared Hinge, Full Surface, Clear Aluminum, Standard Duty, 83"	885682	7.4
CFS83CP	Continuous Geared Hinge, Full Surface, Center Pivot, Clear Aluminum, Standard Duty, 83"	885683	7.5
CFS83HD1	Continuous Geared Hinge, Full Surface, Clear Aluminum, Heavy Duty 83"	885685	7.4
CFS83CP-HD1	Continuous Geared Hinge, Full Surface, Center Pivot, Clear Aluminum, Heavy Duty 83"	885684	7.7
DFM83HD1	Continuous Geared Hinge, Full Mortise, Dark Bronze Aluminum, Heavy Duty 83"	885686	6.3
DFS83	Continuous Geared Hinge, Full Surface, Dark Bronze Aluminum, Standard Duty, 83"	885687	7.4
<b>Adhesive Gasket</b>			
HSS2000-18	HSS Adhesive Intumescent Gasket, 3/64" x 7/16", 18' Roll	885688	0.2
HSS2000-21	HSS Adhesive Intumescent Gasket, 3/64" x 7/16", 21' Roll	885689	0.4
HSS2000-24	HSS Adhesive Intumescent Gasket, 3/64" x 7/16", 24' Roll	885690	0.4
HSS2000xS88D3684	Combination HSS Adhesive Intumescent Gasket and S88 Silicone Gasketing, Dark Brown, 36" x 84" Opening	885692	0.7
HSS2000xS88D4884	Combination HSS Adhesive Intumescent Gasket and S88 Silicone Gasketing, Dark Brown, 48" x 84" Opening	885693	0.8
HSS2000xS44D4884	Combination HSS Adhesive Intumescent Gasket and S44 Silicone Gasketing, Dark Brown, 48" x 84" Opening	885691	0.5
PK33BL17	PemkoPrene™ Adhesive Perimeter Gasket, 3/16" x 3/8", Black, 17' Roll	885700	0.2
PK33D17	PemkoPrene™ Adhesive Perimeter Gasket, 3/16" x 3/8", Dark Brown, 17' Roll	885702	0.2
PK33BL20	PemkoPrene™ Adhesive Perimeter Gasket, 3/16" x 3/8", Black, 20' Roll	885701	0.2
PK55D17	PemkoPrene™ Adhesive Gasket, 3/16" x 1/2", Dark, 17' Roll	885705	0.3
PK55D20	PemkoPrene™ Adhesive Gasket, 3/16" x 1/2", Dark, 20' Roll	885706	0.3
PK55BL17	PemkoPrene™ Adhesive Gasket, 3/16" x 1/2", Black, 17' Roll	885703	0.3
PK55BL20	PemkoPrene™ Adhesive Gasket, 3/16" x 1/2", Black, 20' Roll	885704	0.3
S44D17	Silicone Fin Smoke Gasket, 5/16" x 7/16", Dark 17' Roll with Self Adhesive	885713	0.5
S44D20	Silicone Fin Smoke Gasket, 5/16" x 7/16", Dark 20' Roll with Self Adhesive	885714	0.6
S44D21	Silicone Fin Smoke Gasket, 5/16" x 7/16", Dark 21' Roll with Self Adhesive	885715	0.6
S44D25	Silicone Fin Smoke Gasket, 5/16" x 7/16", Dark 25' Roll with Self Adhesive	885716	0.8
S44W17	Silicone Fin Smoke Gasket, 5/16" x 7/16", White 17' Roll with Self Adhesive	885717	0.5
S88BL17	Silicone Bulb Smoke Gasket, 1/4" x 1/2", Black, 17' Roll with Self Adhesive	885729	0.5
S88BL20	Silicone Bulb Smoke Gasket, 1/4" x 1/2", Black, 20' Roll with Self Adhesive	885730	0.6
S88BL510	Silicone Bulb Smoke Gasket, 1/4" x 1/2", Black, 510' Roll with Self Adhesive	885731	13.6

**ASSA ABLOY**

The global leader in  
door opening solutions

Fax 877-888-2772, email [flashship@assaabloy.com](mailto:flashship@assaabloy.com) or use  
Online Order Entry at [www.assaabloydss.com/extranet](http://www.assaabloydss.com/extranet) by clicking the FLASHship™ icon

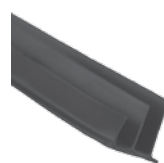
Note: FLASHship™ reserves the right to limit quantities.

Copyright © 2015-2016, Pemko Manufacturing Co., an ASSA ABLOY Group company. All rights reserved.  
Reproduction in whole or in part without the express written permission of Pemko Manufacturing Co. is prohibited.





S44D Adhesive Gasket



S773D Adhesive Gasket

Model #	Description	FLASHship™ #	Approx. Wt. Each (Lbs)
<b>Adhesive Gasket (Cont.)</b>			
S88D17	Silicone Bulb Smoke Gasket, 1/4" x 1/2", Dark, 17' Roll with Self Adhesive	885732	0.5
S88D18	Silicone Bulb Smoke Gasket, 1/4" x 1/2", Dark, 18' Roll with Self Adhesive	885733	0.6
S88D20	Silicone Bulb Smoke Gasket, 1/4" x 1/2", Dark, 20' Roll with Self Adhesive	885734	0.6
S88D21	Silicone Bulb Smoke Gasket, 1/4" x 1/2", Dark, 21' Roll with Self Adhesive	885736	0.7
S88D25	Silicone Bulb Smoke Gasket, 1/4" x 1/2", Dark, 25' Roll with Self Adhesive	885737	0.7
S88D204	Silicone Bulb Smoke Gasket, 1/4" x 1/2", Dark, 204' Roll with Self Adhesive	885735	0.6
S88D510	Silicone Bulb Smoke Gasket, 1/4" x 1/2", Dark, 510' Roll with Self Adhesive	885738	13.6
S88W17	Silicone Bulb Smoke Gasket, 1/4" x 1/2", White, 17' Roll with Self Adhesive	885739	0.5
S88W20	Silicone Bulb Smoke Gasket, 1/4" x 1/2", White 20' Roll with Self Adhesive	885740	0.6
S771D7	Silicone Astragal/Meeting Stile Gasket, 9/32" x 7/16", Dark, 7' Roll with Self Adhesive	885719	0.1
S771C7	Silicone Astragal/Meeting Stile Gasket, 9/32" x 7/16", Clear, 7' Roll with Self Adhesive	885718	0.1
S772D7	Silicone Astragal/Meeting Stile Gasket, 3/16" x 1/2", Dark, 7' Roll with Self Adhesive	885720	0.1
S772D8	Silicone Astragal/Meeting Stile Gasket, 3/16" x 1/2", Dark, 8' Roll with Self Adhesive	885721	0.1
S773D17	Silicone Triple Fin Acoustic/Smoke Gasket, 3/8" x 1/2", Dark 17' Roll with Self Adhesive	885724	0.4
S773D18	Silicone Triple Fin Acoustic/Smoke Gasket, 3/8" x 1/2", Dark 18' Roll with Self Adhesive	885725	0.4
S773D20	Silicone Triple Fin Acoustic/Smoke Gasket, 3/8" x 1/2", Dark 20' Roll with Self Adhesive	885726	0.5
S773D21	Silicone Triple Fin Acoustic/Smoke Gasket, 3/8" x 1/2", Dark 21' Roll with Self Adhesive	885727	0.5
S773BL17	Silicone Triple Fin Acoustic/Smoke Gasket, 3/8" x 1/2", Black 17' Roll with Self Adhesive	885722	0.4
S773BL20	Silicone Triple Fin Acoustic/Smoke Gasket, 3/8" x 1/2", Black 20' Roll with Self Adhesive	885723	0.5
S773W17	Silicone Triple Fin Acoustic/Smoke Gasket, 3/8" x 1/2", White 17' Roll with Self Adhesive	885728	0.4
<b>Perimeter Gasket</b>			
369AP84	Meeting Stile Mill Aluminum Pile Insert, 84"	885664	0.3
379CR84	Adjustable Jamb W/S Clear Anodized Aluminum Sponge EPDM Seal, 84"	885665	2.2
45041CNB3684	Door Sweep, 45-Degree Retainer with 13/32" Nylon Brush Clear Anodized , 3/0 x 7/0 Opening	885675	4.3
2891AS36	1/4" x 1-1/2" x 36" Perimeter Gasket, Heavy duty, Mill Aluminum w/Silicone Insert	885619	1.2
2891AS3684	1/4" x 1-1/2" Perimeter Gasket, Heavy Duty, Mill Aluminum, Silicon Insert for 3/0 x 7/0 Opening	885620	7
2891APK3684	1/4" x 1-1/2" Perimeter Gasket, Heavy Duty, Mill Aluminum PemkoPrene™ Seal for 3/0 x 7/0 Opening	885618	7
290APK84	1/4" x 1-1/2" x 84", Jamb Weatherstrip, Mill Aluminum w/PemkoPrene™ seal	885621	1.5
29310CS84	Straight Snap-Cover Meeting Stile, Clear Anodized Aluminum, Silicone Seal, 1 piece @84"	885623	1.5

Fax 877-888-2772, email [flashship@assaabloy.com](mailto:flashship@assaabloy.com) or use  
 Online Order Entry at [www.assaabloydss.com/extranet](http://www.assaabloydss.com/extranet) by clicking the FLASHship™ icon  
 Note: FLASHship™ reserves the right to limit quantities.

Copyright © 2015-2016, Pemko Manufacturing Co., an ASSA ABLOY Group company. All rights reserved.  
 Reproduction in whole or in part without the express written permission of Pemko Manufacturing Co. is prohibited.

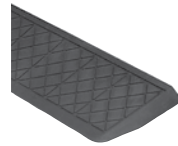
**ASSA ABLOY**

The global leader in  
door opening solutions

**PEMKO**



MAG349D Adhesive Gasketing



RR1.25FMR Rubber Ramp

Model #	Description	FLASHship™ #	Approx. Wt. Each (Lbs)
<b>Perimeter Gasket</b>			
29324CNB36	Snap Cover Weatherstrip, Clear Anodized Aluminum, 1/4" x 7/8", with 3/8" Gray Nylon Brush, 36"	885624	0.7
29324CNB84	Snap Cover Meeting Stile, Clear Anodized Aluminum, 1/4" x 7/8", with 3/8" Gray Nylon Brush, 1 piece @84"	885625	1.5
29326CNB36	Snap Cover Weatherstrip, Clear Anodized Aluminum, 1/4" x 7/8", with 5/8" Gray Nylon Brush, 36"	885626	0.8
29326DNB36	Snap Cover Weatherstrip, Dark Bronze Anodized Aluminum, 1/4" x 7/8", with 5/8" Black Nylon Brush, 36"	885627	0.8
297AS3684	Jamb Weatherstrip Mill Aluminum w/Silicone Insert 1/4" x 13/16" for 3/0 x 7/0 Opening	885628	1.2
MAG349D-85	Magnetic Kerf-In Weatherstrip, Dark, Foam with Magnetic Insert, 85" Long	885694	0.6
Q102D-97	Pemko, 5/8" Reach, Encased Foam Kerf-In Weatherstrip, Dark, 97" Long	885709	0.3
Q103D-97	Pemko, 3/8" Reach, Encased Foam Kerf-In Weatherstrip, Dark, 97" Long	885710	0.2
Q106D-97	Pemko, 5/8" Reach, Encased Foam Kerf-In Weatherstrip, Dark, 97" Long	885711	0.3

Model #	Finish	Size	FLASHship™ #	Approx. Wt. Each (Lbs)
<b>Lite Kits (sold in case quantities; 3 lite kits per case)</b>				
LT-B1G	Prime Coat	5" x 20"	886073	4
LT-B1G	Prime Coat	10" x 10"	886074	4
LT-B1G	Prime Coat	4" x 25"	886075	4
LT-B1G	Prime Coat	22" x 28"	886076	8

**ASSA ABLOY**

The global leader in  
door opening solutions

Fax 877-888-2772, email [flashship@assaabloy.com](mailto:flashship@assaabloy.com) or use  
Online Order Entry at [www.assaabloydss.com/extranet](http://www.assaabloydss.com/extranet) by clicking the FLASHship™ icon  
*Note: FLASHship™ reserves the right to limit quantities.*

Copyright © 2015-2016, Pemko Manufacturing Co., an ASSA ABLOY Group company. All rights reserved.  
Reproduction in whole or in part without the express written permission of Pemko Manufacturing Co. is prohibited.



ROCKWOOD®

Fax 877-888-2772, email [flashship@assaabloy.com](mailto:flashship@assaabloy.com) or use  
Online Order Entry at [www.assaabloydss.com/extranet](http://www.assaabloydss.com/extranet) by clicking the FLASHship™ icon  
*Note: FLASHship™ reserves the right to limit quantities.*

Copyright © 2015-2016-2016, Rockwood Manufacturing Company, an ASSA ABLOY Group company. All rights reserved.  
Reproduction in whole or in part without the express written permission of Rockwood Manufacturing Company is prohibited.

**ASSA ABLOY**

The global leader in  
door opening solutions

Fax FLASHship orders to 877-888-2772 or email to [flashship@assaabloy.com](mailto:flashship@assaabloy.com)

Chicago Issue August 2016 43

**ROCKWOOD®**



94C Flush Pull



106 x 70C Pull Plate



70C Push Plate

Model #	Description	Finish	FLASHship™ #	Approx. Wt. Each (Lbs)
<b>Push Plates</b>				
70B	3-1/2" x 15"	US10B	885885	1
70B	3-1/2" x 15"	US28	885886	1
70B	3-1/2" x 15"	US32D	885887	1
70C	4" x 16"	US3	885891	1
70C	4" x 16"	US10B	885888	1
70C	4" x 16"	US26D	885889	1
70C	4" x 16"	US28	885890	1
70C	4" x 16"	US32D	885892	1
70E	6" x 16"	US32D	885893	2
70F	8" x 16"	US32D	885894	2
<b>Flush Pulls</b>				
94	3-1/2" x 5"	US32D	885906	0.6
94BTB	Set BTB	US32D	885907	0.1
94C	3-1/2" x 5"	US32D	885908	0.6
95A	2-3/16" x 3-1/4"	US26D	885909	0.6
95B	2-11/16" x 4-3/16"	US26	885910	0.6
95B	2-11/16" x 4-3/16"	US26D	885911	0.6
<b>Pull Plates</b>				
102 x 70B	5/8" D x 5-1/2" CTC	US32D	885743	2
102 x 70C	5/8" D x 5-1/2" CTC	US32D	885744	2
105 x 70B	3/4" D x 5-1/2" CTC	US32D	885745	2
105 x 70C	3/4" D x 5-1/2" CTC	US32D	885746	2
106 x 70B	3/4" D x 6" CTC	US32D	885748	2
106 x 70C	3/4" D x 6" CTC	US10B	885749	2
106 x 70C	3/4" D x 6" CTC	US32D	885750	2
107 x 70B	3/4" D x 8" CTC	US32D	885752	2
107 x 70C	3/4" D x 8" CTC	US10B	885753	2
107 x 70C	3/4" D x 8" CTC	US32D	885754	2
110 x 70C	1" D x 8" CTC	US32D	885763	3.5
111 x 70C	1" D x 10" CTC	US32D	885765	4
122 x 70C	3/8" x 1-1/4" x 6" CTC	US10B	885766	2
122 x 70C	3/8" x 1-1/4" x 6" CTC	US32D	885767	2
125 x 70C	1" HR x 6" CTC	US32D	885768	2
126 x 70C	1" HR x 8" CTC	US32D	885769	2

**ASSA ABLOY**

The global leader in  
door opening solutions

Fax 877-888-2772, email [flashship@assaabloy.com](mailto:flashship@assaabloy.com) or use  
Online Order Entry at [www.assaabloydss.com/extranet](http://www.assaabloydss.com/extranet) by clicking the FLASHship™ icon

*Note: FLASHship™ reserves the right to limit quantities.*

Copyright © 2015-2016, Rockwood Manufacturing Company, an ASSA ABLOY Group company. All rights reserved.  
Reproduction in whole or in part without the express written permission of Rockwood Manufacturing Company is prohibited.





132 x 70C Pull Plate



Offset Push Bar Set



320 Lock Protector

Model #	Description	Finish	FLASHship™ #	Approx. Wt. Each (Lbs)
<b>Pull Plates (Cont.)</b>				
132 x 70B	Cast x 5-1/2" CTC	US32D	885771	2
132 x 70C	Cast x 5-1/2" CTC	US32D	885772	2
<b>Straight Door Pulls</b>				
106	3/4" x 6"	US32D	885747	1.2
107	3/4" x 8"	US32D	885751	1.4
110	1" x 8"	US32D	885762	3
111	1" x 10"	US32D	885764	3
<b>Offset Door Pulls</b>				
BF157	1" x 10"	US28	885912	2
BF157	1" x 10"	US32D	885915	2
BF157	1" x 10"	314	885913	2
BF157BTB16	1" x 10"	US28	885919	3
BF158	1" x 12"	US32D	885922	4
<b>Offset Push Pull Sets</b>				
BF15747CT3	10" Offset Pull Bar Set x 33" CTC Push Bar	US28	885916	4.8
BF15747CT3	10" Offset Pull Bar Set x 33" CTC Push Bar	US32D	885918	4.8
BF15747CT3	10" Offset Pull Bar Set x 33" CTC Push Bar	315	885917	4.8
<b>Lock Protectors</b>				
320	Protector	US32D	885783	1.5
320CL	Cylindrical Notched	US32D	885784	1.5
321	Mortise	US32D	885785	1.5
<b>Door Stops</b>				
400	Wall; Cast Convex	US26D	885787	0.3
403	Wall; Cast Concave	US10B	885788	0.3
403	Wall; Cast Concave	US26D	885789	0.3
406	Wall; Wrought Convex	US10B	885790	0.2
406	Wall; Wrought Convex	US26D	885791	0.2
406	Wall; Wrought Convex	US32D	885792	0.2
409	Wall; Wrought Concave	US3	885797	0.2
409	Wall; Wrought Concave	US10	885793	0.2
409	Wall; Wrought Concave	US10B	885794	0.2
409	Wall; Wrought Concave	US26	885795	0.2
409	Wall; Wrought Concave	US26D	885796	0.2

Fax 877-888-2772, email [flashship@assaabloy.com](mailto:flashship@assaabloy.com) or use  
 Online Order Entry at [www.assaabloydss.com/extranet](http://www.assaabloydss.com/extranet) by clicking the FLASHship™ icon  
 Note: FLASHship™ reserves the right to limit quantities.

Copyright © 2015-2016, Rockwood Manufacturing Company, an ASSA ABLOY Group company. All rights reserved.  
 Reproduction in whole or in part without the express written permission of Rockwood Manufacturing Company is prohibited.

**ASSA ABLOY**

The global leader in  
door opening solutions

**ROCKWOOD®**



409 Concave Door Stop



430 Convex Door Stop



441H Dome Stop



446 Door Stop

Model #	Description	Finish	FLASHship™ #	Approx. Wt. Each (Lbs)
<b>Door Stops (Cont.)</b>				
409	Wall; Wrought Concave	US32D	885798	0.2
415	Cast Wall Stop	US26D	885799	0.3
430	Wall; Convex	US26D	885800	0.1
440	Low Dome Stop	US10B	885801	0.2
440	Low Dome Stop	US26D	885802	0.2
441	Low Dome Stop	US10B	885803	0.2
441	Low Dome Stop	US26D	885804	0.2
441CU	Dome Stop w/Riser	US26D	885805	0.3
441H	Cast Universal Dome Stop	US26D	885806	0.2
442	High Dome Stop	US10B	885807	0.2
442	High Dome Stop	US26D	885808	0.2
443	High Dome Stop	US26D	885809	0.2
445	Low Dome Stop	US26D	885810	0.3
446	Round Stop	US10B	885811	0.4
446	Round Stop	US26	885812	0.4
446	Round Stop	US26D	885813	0.4
455	Curved Roller Stop	US26D	885814	0.5
456	Straight Roller Stop	US26D	885815	0.5
456L	Straight Roller Stop	US26D	885816	0.5
459	Spring Loaded Plunger	US26D	885817	1.3

**ASSA ABLOY**

The global leader in  
door opening solutions

Fax 877-888-2772, email [flashship@assaabloy.com](mailto:flashship@assaabloy.com) or use  
Online Order Entry at [www.assaabloydss.com/extranet](http://www.assaabloydss.com/extranet) by clicking the FLASHship™ icon

*Note: FLASHship™ reserves the right to limit quantities.*

Copyright © 2015-2016, Rockwood Manufacturing Company, an ASSA ABLOY Group company. All rights reserved.  
Reproduction in whole or in part without the express written permission of Rockwood Manufacturing Company is prohibited.



470 Door Stop



476 Door Stop

Model #	Description	Finish	FLASHship™ #	Approx. Wt. Each (Lbs)
<b>Door Stops (Cont.)</b>				
460	Kick Down Stop	ALM	885818	0.1
461	Kick Down Stop	US10B	885819	0.1
461	Kick Down Stop	US26D	885820	0.1
461L	Kick Down Stop	US10B	885821	0.1
461L	Kick Down Stop	US26D	885822	0.1
462	Heavy Duty Stop	US2C	885823	0.6
463	Heavy Duty Stop	US32D	885824	0.6
465	Heavy Duty Stop	US26D	885826	0.6
466	Heavy Duty Stop	N/A	885827	0.6
467	Heavy Duty Stop	N/A	885828	0.6
470	Floor Stop	US26D	885829	0.7
471	Floor Stop	US26D	885830	0.7
472	Floor Stop	US26D	885831	0.7
473	Floor Stop	US26D	885832	0.7
474	Floor Stop	US26D	885833	0.7
476	Floor Stop	US26D	885834	0.7
481	Wall Stop	US26D	885836	0.6
481H	Wall Stop	US26D	885837	0.6
482	Wall Stop	US26D	885838	0.6
483	Wall Stop	US26D	885839	0.6
485	Wall Stop	US26D	885840	0.6
486	Angle Stop	US2C	885841	0.4
487	Heavy Duty Stop	US26D	885842	0.8
491	Automatic Stop	US26D	885843	0.8
494	Automatic Stop	US26D	885844	0.8
518	Brass Wall Stop	US26D	885847	0.2
519	Brass Wall Stop	US26D	885848	0.2
526	Spring Base Stop	NP	885850	0.2
528	Hinge Pin Stop	NP	885851	0.2

Fax 877-888-2772, email [flashship@assaabloy.com](mailto:flashship@assaabloy.com) or use  
 Online Order Entry at [www.assaabloydss.com/extranet](http://www.assaabloydss.com/extranet) by clicking the FLASHship™ icon  
*Note: FLASHship™ reserves the right to limit quantities.*

Copyright © 2015-2016, Rockwood Manufacturing Company, an ASSA ABLOY Group company. All rights reserved.  
 Reproduction in whole or in part without the express written permission of Rockwood Manufacturing Company is prohibited.

**ASSA ABLOY**

The global leader in  
door opening solutions



555 Flush Bolt



570 Dust Strike



580 Surface Bolt

Model #	Description	Finish	FLASHship™ #	Approx. Wt. Each (Lbs)
<b>Lever Extension Flush Bolts</b>				
550	Flush Bolt	US26D	885852	0.8
555	Flush Bolt	US10B	885853	0.8
555	Flush Bolt	US26	885854	0.8
555	Flush Bolt	US26D	885855	0.8
555	Flush Bolt Extension Rod, 24"	-	886081	1
557	Flush Bolt	US26D	885856	0.8
<b>Dust Proof Strike</b>				
570	Strike	US10B	885857	0.4
570	Strike	US26D	885858	0.4
<b>Surface Bolts</b>				
580-8	8" Bolt Length	US26D	885859	1.1
630-4	4" Bolt Length	US26D	885883	0.8
<b>Roller Latches</b>				
590	w/Cast Strike	US26D	885860	0.6
591	w/ANSI Strike	US26D	885861	0.6
592	w/#161 Strike	US26D	885862	0.6
593	w/Angle Strike	US26D	885863	0.6
594	w/#161 Strike	US26D	885864	0.6

## ASSA ABLOY

The global leader in  
door opening solutions

Fax 877-888-2772, email [flashship@assaabloy.com](mailto:flashship@assaabloy.com) or use  
Online Order Entry at [www.assaabloydss.com/extranet](http://www.assaabloydss.com/extranet) by clicking the FLASHship™ icon

*Note: FLASHship™ reserves the right to limit quantities.*

Copyright © 2015-2016, Rockwood Manufacturing Company, an ASSA ABLOY Group company. All rights reserved.  
Reproduction in whole or in part without the express written permission of Rockwood Manufacturing Company is prohibited.





603 Door Guard



614V Door Knocker/Viewer



622 Door Viewer



802 Coat Hook

Model #	Description	Finish	FLASHship™ #	Approx. Wt. Each (Lbs)
<b>Door Guards</b>				
603	Cast Aluminum	DCRM	885867	0.4
604	Cast Brass	US26D	885870	0.4
605	Brass	US26D	885871	0.3
606	Clear Rubber	N/A	885872	0.3
<b>Door Silencers</b>				
608	Gray Rubber	N/A	885873	0.01
608CA	Clear Rubber	N/A	885874	0.01
609	Gray Rubber	N/A	885875	0.01
<b>Door Knockers/Viewers</b>				
614V	Knocker/w 190° Viewer	US26D	885876	0.4
620	160° Viewer	CRM	885877	0.1
622	190° Viewer	ANT	885878	0.1
622	190° Viewer	BRS	885879	0.1
622	190° Viewer	CRM	885880	0.1
622	190° Viewer	DCRM	885881	0.1
622	190° Viewer	STNN	885882	0.1
<b>Coat Hooks</b>				
796	Small Hook	US26D	885895	0.3
802	Medium Hook	US26D	885896	0.4
806	Medium Hook	US26D	885897	0.4
<b>Misc. Gate Latch /Pulls/Catches</b>				
602	Secret Gate Latch	US26D	885865	1
853	Wire Pull	US26D	885899	0.5
860	Flush Cup Pull	US32D	885900	0.9
872	Cast Flush Pull	US26D	885901	0.9
900	HD Magnetic Catch	ALM	885904	0.4
901	XHD Magnetic Catch	ALM	885905	0.4
<b>Coordinators</b>				
2601AB	Mounting Bracket	Black Prime Coat	885776	1
2601C	Mounting Bracket	Black Prime Coat	885777	1
2660	Coordinator	Black Prime Coat	885741	4.5
2672	Coordinator	Black Prime Coat	885778	4.5
2696	Coordinator	Black Prime Coat	885742	4.5
1700	Universal	Black Prime Coat	885775	3.5
<b>Automatic Flush Bolts</b>				
2842	Automatic	US26D	885779	2.4
2845	Self Latching	US26D	885780	2.4
2942	Automatic	US26D	885781	2.4
2945	Self Latching	US26D	885782	2.4

Fax 877-888-2772, email [flashship@assaabloy.com](mailto:flashship@assaabloy.com) or use  
 Online Order Entry at [www.assaabloydss.com/extranet](http://www.assaabloydss.com/extranet) by clicking the FLASHship™ icon  
 Note: FLASHship™ reserves the right to limit quantities.

Copyright © 2015-2016, Rockwood Manufacturing Company, an ASSA ABLOY Group company. All rights reserved.  
 Reproduction in whole or in part without the express written permission of Rockwood Manufacturing Company is prohibited.

**ASSA ABLOY**

The global leader in  
door opening solutions

**ROCKWOOD®**



2600 Coordinator



1700 Universal  
Coordinator



2842 Automatic  
Flush Bolt



R111LPB Trim  
Protector Bar



K1050 Kick Plate

Model #	Description	Finish	FLASHship™ #	Approx. Wt. Each (Lbs)
<b>Filler Plates</b>				
DFF4	Frame Hinge	Prime Coat	885924	0.02
LF161	Door Edge	Prime Coat	885927	0.02
DF86	Door Edge	Prime Coat	885923	0.02
SFASA	Strike	Prime Coat	885929	0.02
HS42	Hinge Shim	-	885925	0.1
HS44	Hinge Shim	-	885926	0.1
<b>Trim Protection Bars</b>				
R111LPB	Lever Handle Protector	US32D	885928	4.5
<b>Protection Plates</b>				
K1050	4 x 35	US32D	885845	2
K1050	6 x 34	US32D	885884	3
K1050	8 x 34	US10B	885930	4.5
K1050	8 x 34	US32D	885902	4
K1050	8 x 35	US32D	885903	4.5
K1050	10 x 34	US10B	885932	5.5
K1050	10 x 34	US28	885931	3
K1050	10 x 34	US32D	885755	5
K1050	10 x 34 (4BE)	US32D	885757	5
K1050	10 x 34-1/2	US32D	885758	5
K1050	10 x 35	US32D	885759	5.5
K1050	10 x 40	US32D	885760	6
K1050	10 x 46	US32D	885761	5
K1050	12 x 34	US32D	885770	6
K1050	16 x 34	US32D	885774	8
K1050	34 x 34	US32D	885786	17

**ASSA ABLOY**

The global leader in  
door opening solutions

Fax 877-888-2772, email [flashship@assaabloy.com](mailto:flashship@assaabloy.com) or use  
Online Order Entry at [www.assaabloydss.com/extranet](http://www.assaabloydss.com/extranet) by clicking the FLASHship™ icon

*Note: FLASHship™ reserves the right to limit quantities.*

Copyright © 2015-2016, Rockwood Manufacturing Company, an ASSA ABLOY Group company. All rights reserved.  
Reproduction in whole or in part without the express written permission of Rockwood Manufacturing Company is prohibited.

RIXSON®



Fax 877-888-2772, email [flashship@assaabloy.com](mailto:flashship@assaabloy.com) or use  
Online Order Entry at [www.assaabloydss.com/extranet](http://www.assaabloydss.com/extranet) by clicking the FLASHship™ icon  
*Note: FLASHship™ reserves the right to limit quantities.*

Copyright © 2015-2016, Yale Security Inc., an ASSA ABLOY Group company. All rights reserved.  
Reproduction in whole or in part without the express written permission of Yale Security Inc. is prohibited.

**ASSA ABLOY**

The global leader in  
door opening solutions

Fax FLASHship orders to 877-888-2772 or email to [flashship@assaabloy.com](mailto:flashship@assaabloy.com)

Chicago Issue August 2016 51

# RIXSON®



147 Offset Pivot



195 Offset Pivot



370 Center Hung Pivot


EM19 Power Transfer  
Intermediate Pivot

Model #	Description	Hand	Finish	FLASHship™ #	Approx. Wt. Each (Lbs)
<b>3/4" Offset Pivot Sets (Includes Top Pivot)</b>					
117	Regular (250#) Interior	RH	626	885422	3
117	Regular (250#) Interior	LH	626	885423	3
147	Regular (500#) Interior/Exterior	RH	613	885428	2
147	Regular (500#) Interior/Exterior	LH	613	885429	2
147	Regular (500#) Interior/Exterior	RH	626	885426	2
147	Regular (500#) Interior/Exterior	LH	626	885427	2
L147	Heavy Weight (700#) Lead 1-3/4" Door	LH	613	885433	5
L147	Heavy Weight (700#) Lead 1-3/4" Door	RH	626	885430	5
L147	Heavy Weight (700#) Lead 1-3/4" Door	LH	626	885431	5
195	Regular (400#) Frame Attached	RH	613	885436	3
195	Regular (400#) Frame Attached	LH	613	885437	3
195	Regular (400#) Frame Attached	RH	626	885434	3
195	Regular (400#) Frame Attached	LH	626	885435	3
<b>Center Hung Pivot Sets (Includes Top Pivot)</b>					
128-3/4	250#	-	613	885441	2
128-3/4	250#	-	626	885440	2
127-3/4	250# Frame Attached	-	613	885439	2
127-3/4	250# Frame Attached	-	626	885438	2
370	400#	-	613	885443	3
370	400#	-	626	885442	3
<b>Intermediate Pivots</b>					
M19	Regular	RH	613	885446	2
M19	Regular	LH	613	885447	2
M19	Regular	RH	626	885444	2
M19	Regular	LH	626	885445	2
EM19	Low Voltage Transfer Pivot, ElectroLynx® 8-Wire	RH	626	885448	2
EM19	Low Voltage Transfer Pivot, ElectroLynx® 8-Wire	LH	626	885449	2

## ASSA ABLOY

The global leader in  
door opening solutions

Fax 877-888-2772, email [flashship@assaabloy.com](mailto:flashship@assaabloy.com) or use  
Online Order Entry at [www.assaabloydss.com/extranet](http://www.assaabloydss.com/extranet) by clicking the FLASHship™ icon

*Note: FLASHship™ reserves the right to limit quantities.*

Copyright © 2015-2016, Yale Security Inc., an ASSA ABLOY Group company. All rights reserved. Reproduction  
in whole or in part without the express written permission of Yale Security Inc. is prohibited.



Checkmate® Stops &amp; Holders

994 Electromagnetic  
Holder/Release

Model #	Description	Finish	FLASHship™ #	Approx. Wt. Each (Lbs)
<b>Checkmate® Stops and Holders</b>				
<b>Concealed</b>				
1-326	Heavy Duty Holder, Size 3	613	885457	5
1-326	Heavy Duty Holder, Size 3	630	885455	5
1-336	Heavy Duty Stop, Size 3	613	885456	5
1-336	Heavy Duty Stop, Size 3	630	885454	5
6-336	Low Profile Stop, Size 3	630	885462	5
2-346	Standard Duty Adjustable Combo, Size 3	613	885465	2
2-346	Standard Duty Adjustable Combo, Size 3	630	885464	2
<b>Surface</b>				
9-326	Heavy Duty Holder, Size 3	613	885461	4
9-326	Heavy Duty Holder, Size 3	630	885459	4
9-336	Heavy Duty Stop, Size 3	613	885460	4
9-336	Heavy Duty Stop, Size 3	630	885458	4
10-346	Standard Duty Adjustable Combo, Size 3	613	885467	2
10-346	Standard Duty Adjustable Combo, Size 3	630	885466	2
<b>Electromagnetic Door Holder/Releases</b>				
<b>Triple Voltage Door Holders (12VDC, 24VAC/DC and 120VAC)</b>				
996	Surface Wired	689	885472	2
996	Surface Wired	690	885473	2
994	Adjustable Short Armature Concealed Wiring	689	885470	2
994	Adjustable Short Armature Concealed Wiring	690	885471	2
980	Floor Mounted	689	885468	3
980	Floor Mounted	690	885469	3
997	Wall Mounted	689	886077	2
997	Wall Mounted	690	886078	2
998	Wall Mounted	689	886079	3
998	Wall Mounted	690	886080	3
<b>Armature Extensions</b>				
900	Base Unit	689	885474	0.1
900	Base Unit	690	885475	0.1
900-50	1/2" Armature Extension Filler*	689	885476	0.1
900-50	1/2" Armature Extension Filler*	690	885477	0.1
900-75	3/4" Armature Extension Filler*	689	885478	0.1
900-75	3/4" Armature Extension Filler*	690	885479	0.1
900-100	1" Armature Extension Filler*	689	885480	0.1
900-100	1" Armature Extension Filler*	690	885481	0.1

\*Extension spacers and bend must be used with 900 base unit armature extension

Fax 877-888-2772, email [flashship@assaabloy.com](mailto:flashship@assaabloy.com) or use  
Online Order Entry at [www.assaabloydss.com/extranet](http://www.assaabloydss.com/extranet) by clicking the FLASHship™ icon  
Note: FLASHship™ reserves the right to limit quantities.

Copyright © 2015-2016, Yale Security Inc., an ASSA ABLOY Group company. All rights reserved.  
Reproduction in whole or in part without the express written permission of Yale Security Inc. is prohibited.

**ASSA ABLOY**

The global leader in  
door opening solutions



# Order Form

Fax To: 877.888.2772 • E-mail To: FLASHship@assaabloy.com  
Attention: Customer Service

Account # \_\_\_\_\_ P.O. # \_\_\_\_\_ P.O. Date \_\_\_\_\_  
Company Name \_\_\_\_\_  
Contact Name \_\_\_\_\_  
Contact Phone \_\_\_\_\_ Contact Fax \_\_\_\_\_ Contact E-mail \_\_\_\_\_

Ship To \_\_\_\_\_  
Address \_\_\_\_\_  
City \_\_\_\_\_ State \_\_\_\_\_ Zip \_\_\_\_\_  
Attention \_\_\_\_\_

Ship Via: ☐ Standard: Ground  
☐ Next Day: Freight Pre-Paid and Added to Customer Invoice  
☐ 2nd Day: Freight Pre-Paid and Added to Customer Invoice

- Instructions:**
- 1. Orders should be submitted on this form to qualify for FLASHship™.
  - 2. Factory lead times apply if ANY items on the order are NOT listed in the current published FLASHship offering.
  - 3. Orders can not be changed or cancelled.

Qty.	FLASHship #	Description	Comments	Price

# Order Form

Fax To: 877.888.2772 • E-mail To: [FLASHship@assaabloy.com](mailto:FLASHship@assaabloy.com)  
Attention: Customer Service

Page \_\_\_\_\_ of \_\_\_\_\_

Account #: \_\_\_\_\_ P.O. #: \_\_\_\_\_

**Company Name:** \_\_\_\_\_

**Instructions:**

1. Orders should be submitted on this form to qualify for FLASHship™.
2. Factory lead times apply if ANY items on the order are NOT listed in the current published FLASHship offering.
3. Orders cannot be changed or cancelled.

[illegible]

ASSA ABLOY is the global leader in door opening solutions, dedicated to satisfying end-user needs for security, safety and convenience

**ASSA ABLOY**

## Industry-Leading Brands

*To bring you the best and most complete security and life-safety solutions, ASSA ABLOY provides the products of brands known for quality, service and innovation. This group of hardware manufacturers works together to create openings that are strong, durable and meet today's needs for advanced safety and security solutions.*

MARKAR | [www.markar.com](http://www.markar.com)  
Complete range of continuous hinges

McKINNEY | [www.mckinneyhinge.com](http://www.mckinneyhinge.com)  
Standard hinges, electric hinges, decorative hinges, specialty hinges, and custom hinges

PEMCO | [www.pemko.com](http://www.pemko.com)  
Thresholds, gasketing products, continuous geared hinges, lites, louvers and accessories

RIXSON | [www.rixson.com](http://www.rixson.com)  
Concealed closers, pivots and mechanical/electromechanical door holders

ROCKWOOD | [www.rockwoodmfg.com](http://www.rockwoodmfg.com)  
Architectural door pulls, door stops and holders, bolts and latches, specialty door trim

YALE | [www.yalelocks.com](http://www.yalelocks.com)  
Mortise, cylindrical & auxiliary locks, exit devices, door closers, electromechanical products, and key systems

ASSA ABLOY Door Security Solutions  
110 Sargent Drive  
New Haven, CT 06511  
800.DSS.EZ4U (377.3948) | 203.624.5225  
[www.assaabloydss.com](http://www.assaabloydss.com)

**We are where you are.  
Connect with us online:**



[www.facebook.com/assaabloydss](https://www.facebook.com/assaabloydss)



[www.twitter.com/assaabloydss](https://www.twitter.com/assaabloydss)

Copyright © 2015-2016, ASSA ABLOY Door Security Solutions, an ASSA ABLOY Group company. All rights reserved. Reproduction in whole or in part without the express written permission of ASSA ABLOY Door Security Solutions is prohibited.

2500-2832 08/16N