

Dallas August 2016

FLASHship™

Speeding to
Success:
**A TALK WITH
VICKI NEWMAN**

Hugo Hotel
Features
**ROCKWOOD
PULLS**

FLASHship
Product Catalog

The ASSA ABLOY FLASHship™
Program includes products
from leading brands:

MARKAR
McKINNEY
PEMKO
RIXSON
ROCKWOOD
YALE

ASSA ABLOY

The global leader in
door opening solutions



Accessories Make a Difference

ASSA ABLOY

Selecting the right high quality accessories for your door openings really matters!

Pemko, Rockwood and McKinney products save energy, control light and sound transmission, decrease air leakage and prevent bacterial transfer. This helps save lives, save money, and improve the quality of life.

For more information contact your local ASSA ABLOY Door Security Solutions representative at www.assaabloydss.com, click on Sales Support or scan the code below.



Get the free mobile app at <http://gettag.mobi>

Markar

McKinney

PEMKO

ROCKWOOD

The global leader in
door opening solutions

04

FLASHship™

General Information

Finishes

Terms & Conditions

11

Yale®

Product Comparison
Charts

Mortise Locks &
Cylinders

Cylindrical Locks

Cylindrical Deadbolts

Exit Devices

Exit Device Trim,
Mullions & Cylinders

Door Closers

Touchscreen Locks

30

Markar

Stainless Steel Pin & Barrel

Continuous Hinges

32

McKinney®

Spring Hinges

3 & 5 Knuckle Hinges

MacPro® & ElectroLynx®
Hinges

35

Pemko

Thresholds

Door Shoes, Jamb Sets,
Sweeps & Astragals

Rain Drips, Automatic Door
Bottoms & Aluminum
Geared Continuous Hinges

Adhesive Gaskets

Perimeter Gaskets/Ramps

Lite Kits

43

Rockwood®

Push & Pull Plates

Door Pulls, Lock
Protectors & Door Stops

Flush Bolts, Dust Proof
Strikes, Surface Bolts,
Roller Latches, Door
Guards

Silencers, Knockers,
Coat Hooks, Misc. Pulls,
Coordinators & Flush Bolts

51

Rixson®

Pivot Sets &
Intermediate Pivots
Checkmate® Stops &
Holders

Electromagnetic Door
Holder/Releases

54

Order Forms



FLASHship™

Welcome to our
inaugural issue of
FLASHship magazine!

FLASHship, offering select products from six brands with 24-hour shipping is the latest ASSA ABLOY program designed to help you 'do business better'.

Use FLASHship to help reduce inventory, improve your lead times and control your freight costs – and simplify ordering! Products from all six of the ASSA ABLOY brands are available for order on one order form, and you receive one invoice. You can even place your order online for the quickest response.

Check out pages 11-54 for a listing of all the products available through this program.

Contact us with any questions at 800-438-1951 or speak with your local ASSA ABLOY Door Security Solutions representative.

FLASHship™ Program Information

The ASSA ABLOY FLASHship program allows the convenience of placing a single order for Yale architectural hardware plus accessory products from five ASSA ABLOY brands. This program contains selected popular products from Markar, McKinney, Pemko, Rixson, Rockwood and Yale all shipping from one of our FLASHship locations within 24-hours.

QUALIFICATIONS

To place a qualifying order for the FLASHship program:

- A. Use the "FLASHship Order Form" on pages 56-57 and indicate product by FLASHship part number as stated in the FLASHship catalog, or
- B. Use your own purchase order with "FLASHship Program" prominently indicated. Also, products must be indicated by their FLASHship part number or by the exact model number for available product configurations in the current FLASHship program book, or
- C. Enter FLASHship order by using the on-line order entry process.

ONLINE ORDER ENTRY

FLASHship orders can be entered by using our convenient online order entry system. Available on the ASSA ABLOY extranet, the dedicated FLASHship icon takes the user directly to the web-based form that offers easy-to-use drop-down menus to assist with product search and selection.

Order Form

Please use the form on pages 54-55 when placing orders for FLASHship products.

Lead Time

Lead time is 24-hours from receipt of order. We reserve the right to limit quantities.

Only items printed in this current publication will be given 24-hour lead times for shipping.

Part Numbers

Specific part numbers are assigned to each unique configuration. These FLASHship part numbers should be included on the purchase order to ensure ease of processing.

Mixed Orders

To ensure expedited processing, FLASHship products must be submitted on a separate purchase order from non-FLASHship products. Any orders received including items that are not currently published in the FLASHship offering will be returned to the customer for re-submittal.

The website for Online Order Entry is www.assaabloydss.com/extranet and then click the FLASHship icon. Contact your customer service representative to set up online order entry access and training.



Contacts

Customer Service

For FLASHship customer service questions and/or issues, call: 800-438-1951

Hours of Operation

Customer Service: 8:00 am – 4:30 pm EST
Dallas facility: 7:30 am – 4:00 pm CST

ASSA ABLOY Service Centers

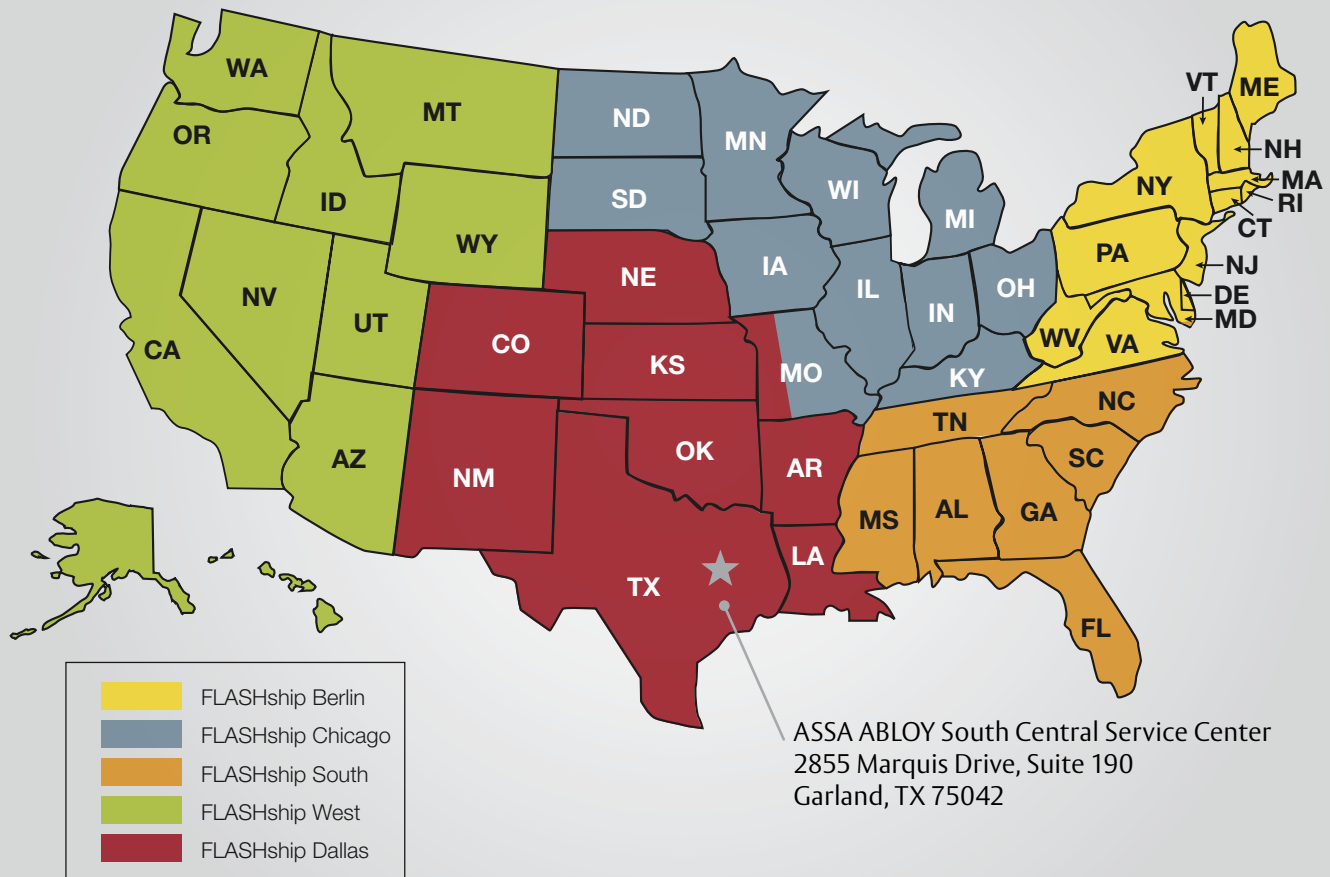
FLASHship products are fully stocked at your local service center, which brings doors, frames and hardware closer to you and your job sites.

Technical Product Support

For technical questions and/or issues with products, please contact the brands' technical support:

Brand	Hours of Operation	Toll-Free
Markar	7:00 am – 7:00 pm CST	800-824-3018
McKinney	8:00 am – 4:30 pm EST	800-346-7707
Pemko	7:00 am – 7:00 pm CST	800-824-3018
Rixson	8:00 am – 4:30 pm EST	800-457-5670
Rockwood	8:00 am - 7:00 pm EST Mon.-Thurs. 8:00 am - 4:30 pm EST Friday	800-458-2424
Yale	8:00 am – 4:30 pm EST	800-438-1951 x 5033

FLASHship Territories



*All territories should use FLASHship Berlin for FLASHship Masterkeying

Speeding to Success: ASSA ABLOY's FLASHship Program Provides 24-Hour Shipping Throughout the U.S.

*An interview with Vicki Newman,
Director of Business Development, ASSA ABLOY*

"Doing Business Better"

John Donoghue, President of TACC, appreciates the ability to reduce inventory and more efficiently manage freight. Washington Architectural Hardware owner Don Anderson states the low prepaid freight allowance and short lead times have become an important component in his business plan. Jim Pellegrini, Vice President of Park Avenue Building Supplies, enjoys looking like a hero to his valued customers. These ASSA ABLOY partners are located across the country and serve varying channels in the architectural hardware industry. What they all have in common is their recognition of the value ASSA ABLOY FLASHship brings to their companies.

Convenient, Efficient and Cost Effective Packages

When ASSA ABLOY FLASHship launched in June 2013, the goal was to bring additional value to our customers by providing quality hardware for the entire opening in an efficient and expedient way. The industry leading brands of Markar, McKinney, Pemko, Rixson, Rockwood and Yale were now orderable on one purchase order and shipped together in 24 hours, creating a convenient, efficient and cost effective package. That initial Berlin, CT launch was so successful, a second location in Ventura, CA opened the following December. Within 6 months, FLASHship was supplying over 850 high demand ASSA ABLOY products to hundreds of customers from coast to coast with 24 hour shipping.

With strong customer support for faster delivery, a third FLASHship location in Austell, GA opened in December 2014. With these successes under our belt, we are very pleased to announce the opening of FLASHship Dallas on May 4, 2015. ASSA ABLOY customers in forty two states now enjoy full hardware opening deliveries in 2 days or less after receipt of purchase order. With additional locations in development, we will soon reach our goal of supplying customers in all 48 continental states with not only 24 hour shipping but delivery in two days or less.

FLASHship currently offers hardware providers the most comprehensive one stop selection available, encompassing more than 850 high demand products shipped in 24 hours from one of four strategically placed warehouses to maximize one to two day delivery. With a low \$1500 prepaid freight option, FLASHship has quickly become the hardware supply program of choice by customers throughout the nation. With a 98% on time order fill rate, FLASHship is recognized as the most dependable, convenient and cost saving supply option in the industry.

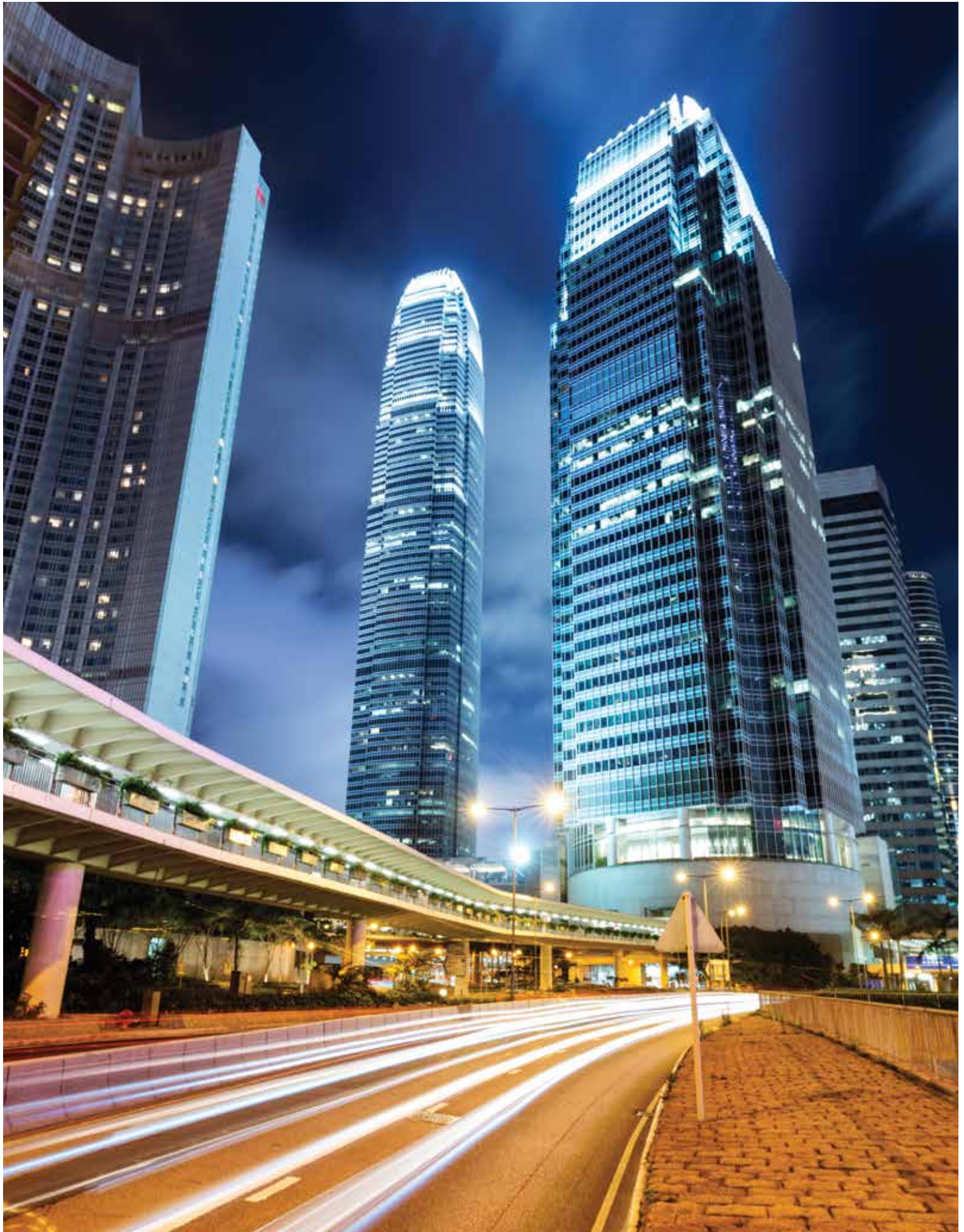
Supporting our Partnerships

"The overwhelming success of FLASHship can be attributed to the attention to detail in meeting the needs of our customers," said Vicki Newman, Director of Business Development for ASSA ABLOY Door Security Solutions and the driving force behind FLASHship. "We've structured a program that our competitors simply cannot replicate."

Newman believes that the success of FLASHship reflects ASSA ABLOY's commitment to the success of hardware suppliers across the country.

"FLASHship was developed, designed and driven by the fact that we consider contract hardware distributors our business partners," she said. "Our goal was to create a supply chain that enables our customers to compete in the discretionary business channel by reducing their inventory and shipping costs while ensuring their ability to respond quickly to opportunities critical to their success."

"I knew we had achieved our goal when the most repeated comment from our customers was that the value of FLASHship was so comprehensive it appeared to have been structured from their side of the desk. The bottom line is that we have truly invested in our customers' businesses by implementing the FLASHship program."



Designer and Architect Marcello Pozzi Adds Detail and Emotion to New Soho Hotel with Rockwood Pulls

Hotel Hugo defines industrial chic. The upscale, contemporary hotel was the vision of designer and architect Marcello Pozzi and Nobutaka Ashihara, the project's architect of record. Recently opened in SoHo, the design blends the neighborhood's sophisticated atmosphere with the gritty underpinnings of New York City in a style Pozzi refers to as a game of contrast, a juxtaposition of finishes. There is a striking interplay between opposites throughout, polished stainless steel, for example, that complements rough concrete. This careful balance isn't an accident; Pozzi relied on seemingly minor details, like ASSA ABLOY's Rockwood door pulls, to create Hotel Hugo's distinct character.

The Importance of Hardware

When it comes to tying together a space's look and feel, Pozzi believes hardware does a lot of the heavy lifting. Since the door pull serves as each guest's first touch point with the hotel, Pozzi wanted to infuse the experience of opening the front door for the first time with emotional resonance, so he insisted on something more dramatic and less predictable than the stainless steel typically used for commercial entrances.

"Hardware gives character to a space, even more so than other design elements," said Pozzi. "It's both visual and interactive, creating character through sight and touch."

Having used Rockwood for prior projects, the manufacturer's

high-end hand-stitched leather offset pulls instantly came to mind when Pozzi was looking for hardware that did its job with enough style to also serve as a critical design element. This particular style of pulls is very contemporary. At the same time, unlike most office hardware, it also emulates warmth. He chose pulls with thick 1½" soft leather grips to elicit a stronger, conscious reaction from guests as they enter. And because he had worked with Rockwood before, Pozzi knew the selected hardware would exceed expectations in terms of quality.

Inside Hotel Hugo

With soaring 12-foot wood doors, the six-foot Rockwood pulls are a perfect fit. Since Pozzi insisted on design consistency beyond the front entrance, he used a variety of Rockwood architectural door pulls in many other parts of the hotel including entry, restaurant, and doors in public areas such as the meeting room and business center.

The restaurant offers more examples of Pozzi's flair for mixing elements and finishes. The bar includes a polished concrete countertop, boldly accented with polished stainless steel hardware. Pozzi used two pull sizes for the doors in the restaurant, a 72-inch pull for most doors and a 30-inch version for the private dining area in the back. The 72-inch pulls attach to the door at three points, which is unique in the industry. Rockwood offers an optional mid-post which provides added support and visual detail for long door pulls. Pozzi also chose rounded end pulls, which makes the entrances to the restaurant and private dining area look more luxurious.

Hotel Hugo features a wood storefront, with modern proportions and detail. After the custom-built 12-foot wood storefront doors there are secondary glass doors – yet another example of traditional juxtaposed with contemporary – all tied together with the elegant Rockwood door pulls. Pozzi gave additional exposure to the hardware by using accent lights, making the hardware stand out against both the wood and the glass doors.

A Critical Design Element

Although quite contemporary, there's a retro feel in the hotel restrooms and suites, and the exposed hardware remains a constant detail. As most industrial places are characterized by hardware and steel, statement hardware with character is central to the hotel's overall design.

Hardware often subconsciously gives character to a space. All of the handrails, door pulls, handles, decorative lights and even trim around mirrors are thoughtfully chosen – Rockwood pulls are critical in communicating that the guest has indeed arrived at Hotel Hugo.



Terms and Conditions

Minimum Order

Minimum invoice is \$50.00 net product value.

Quotes

Quoted projects do not qualify for the FLASHship™ program. Standard buying program discounts only.

Freight

All orders are shipped FOB factory/warehouse, except as expressly provided below. When delivered to the Transportation Company, the Purchaser assumes the risk of loss or damage in transit.

Customer orders with net product value in excess of \$1,500.00 for the continental United States and \$2,000.00 for Alaska and Hawaii will be shipped prepaid by the ASSA ABLOY carrier of choice to a single destination point in the United States.

Customer orders with net product value in excess of \$1,500.00 for the continental US and \$2,000.00 for Alaska and Hawaii will be shipped prepaid by the ASSA ABLOY carrier of choice to a single destination point in the United States.

A minimum freight and handling charge of \$15.00 will be charged on orders with net product value of \$400.00 or less.

For orders with net product value greater than \$400.00 and less than \$1,500.00, freight charges will be calculated as a percentage of the net invoice value and will be added to Customer's invoice. The percentage is based on the National U.S. Average On Highway Diesel Fuel Prices as reported by the US Department of Energy in effect at the beginning of each quarter. On the first Monday of each quarter, the new rate will be published on the ASSA ABLOY Door Security Solutions extranet and will go into effect on the 2nd Monday of the quarter. Please refer to the ASSA ABLOY distributor extranet for the rate chart and information on the current freight charge percentage. The percentage in effect at the time of shipment of the order will be charged.

If a customer provides their own freight account number for the freight charges, ASSA ABLOY will apply a handling fee of \$25.00 to the invoice.

Expedited shipping options – If the customer requests an expedited method of shipment such as "Next Day Air" the charges will be prepaid by ASSA ABLOY and the full rate for the service, as published by the carrier, will be added to the customer's invoice.

Packing – ASSA ABLOY will pack, mark and ship the products according to its standard procedures for shipment, unless the parties agree, in writing, that ASSA ABLOY will comply with any special instructions provided by the customer. Special instructions must be submitted, in writing, at time of order placement. Compliance with special instructions may result in an increased price.

Delivery

Orders will be acknowledged and given a scheduled delivery date. Complete information is required to process all orders. Orders with insufficient information for processing (i.e. part numbers) may be subject to extended lead times which are relative to the time required in obtaining the necessary information for order processing.

Yale will not be liable for back charges incurred based on availability of product or as a result of delays in delivery caused by insufficient information required to process an order. Yale will not be held responsible for delays in delivery caused by strikes, fires, floods or any other causes beyond our control, including the delivery of material to us. Under no circumstances shall Yale be liable or accountable for consequential damages due to failure of delivery.

Changes/Cancellations

Due to the promptness of delivery, no changes or cancellations can be accepted.

Prices

All shipments will be made at prices prevailing at time of shipment.

Terms

Invoices dated the 1st through the 15th will be due for 2% discount on the 10th of the following month. Invoices dated the 16th through the 31st will be due for 2% discount on the 25th of the following month. Net immediately thereafter.

Returned Goods

All FLASHship products returned as "Goodwill" must meet the following criteria to be considered a return:

- Be in original, unmarked and undamaged cartons.
- Shipped and invoiced within the previous 30 days.

No restocking fee will apply. Upon receipt and verification that the returned merchandise meets the foregoing conditions, a credit will be issued for the original invoice amount.

Consult the current Price Books for pricing information and a complete list of Terms & Conditions.

Warranties

All standard limited warranties apply. Consult current Price Books for a complete list of warranty information.



inTouch®



The reliability
of Yale locks...

With today's
touchscreen technology...

A world
of new options
for building
owners.

*Bring the interactive
touchscreen to life with a
simple inTouch.*



Yale brings touchscreen access to robust cylindrical locksets – modern electronics combine with stand-alone security.

inTouch® is recommended for anywhere requiring simple controlled access – management offices, storerooms, restroom doors, staff lounges, records storage areas, airport terminals, IT departments, and many more.

Get inTouch.

1-800-438-1951
www.yalelocks.com

An ASSA ABLOY Group brand

ASSA ABLOY



Mortise Lock Comparison						
Yale	Cal-Royal	Dorma	Falcon	Hager	PDQ	Stanley Commercial
8800FL	M8000	ML9000	M	3800	MR	QMS100

Grade 1 Cylindrical Lock Comparison						
Yale	Cal-Royal	Dorma	Falcon	Hager	PDQ	Stanley Commercial
4700LN	CGN	CL800	T	3400	GT	QCL100

Grade 2 Cylindrical Lock Comparison						
Yale	Cal-Royal	Dorma	Falcon	Hager	PDQ	Stanley Commercial
4600LN	SL	C500	B/W	3500	GP/SA	QCL200

Deadbolt Comparison							
	Yale	Cal-Royal	Dorma	Falcon	Hager	PDQ	Stanley Commercial
Grade 1	D100	CRB	D800	D100	3100	KT100	QDB100
Grade 2	D200	T	DB600	D200	3200	KV100	QDB200

Grade 1 Heavy Duty Closer Comparison						
Yale	Cal-Royal	Dorma	Falcon	Hager	PDQ	Stanley Commercial
1100BF	300	7400	SC61	5300	3100	QDC100

Grade 1 Architectural Closer Comparison						
Yale	Cal-Royal	Dorma	Falcon	Hager	PDQ	Stanley Commercial
2700	N900	8600	SC81	5200	5300	QDC200

Grade 1 Commercial Exit Device Comparison - Stainless Steel						
Yale	Cal-Royal	Dorma	Falcon	Hager	PDQ	Stanley Commercial
5800	CR441	8900	SC71	5100	7400	QED100

Grade 2 Cylindrical Lock Comparison						
Yale	Cal-Royal	Dorma	Falcon	Hager	PDQ	Stanley Commercial
1800	2200	8300	19	4700	4200	QED300

Grade 1 Commercial Exit Device Comparison - Stainless Steel						
Yale	Cal-Royal	Dorma	Falcon	Hager	PDQ	Stanley Commercial
2100	9800	NA	4700	4200	GP/SA	QED100

Fax 877-888-2772, email flashship@assaabloyusa.com or use Online Order Entry at www.assaabloydss.com/extranet by clicking the FLASHship™ icon
Note: FLASHship™ reserves the right to limit quantities.

Copyright © 2015-2016, Yale Security Inc., an ASSA ABLOY Group company. All rights reserved.
 Reproduction in whole or in part without the express written permission of Yale Security Inc. is prohibited.



Augusta - AUR



Pacific Beach - PBR

Design	Model #	Finish	Hand	Strike	Cylinder	FLASHship™ #	Approx. Wt. Each (Lbs)
8801FL - Passage or Closet Latch							
AUR	8801FL	613E	RH	2815	—	685398	6
AUR	8801FL	626	RH	2815	—	685015	6
PBR	8801FL	613E	RH	2815	—	685402	6
PBR	8801FL	626	RH	2815	—	685016	6
8802FL - Privacy, Bedroom or Bath Lock							
AUR	8802FL	613E	RH	2815	—	685400	6
AUR	8802FL	626	RH	2815	—	685017	6
PBR	8802FL	613E	RH	2815	—	685403	6
PBR	8802FL	626	RH	2815	—	685018	6
8805FL - Storeroom or Closet Lock							
AUR	8805FL	613E	RH	2815	Less Cylinder	685404	6
AUR	8805FL	626	RH	2815	Less Cylinder	685019	6
PBR	8805FL	613E	RH	2815	Less Cylinder	685406	6
PBR	8805FL	626	RH	2815	Less Cylinder	685020	6
8807FL - Entry Lock							
AUR	8807FL	613E	RH	2815	Less Cylinder	685407	6
AUR	8807FL	626	RH	2815	Less Cylinder	685021	6
PBR	8807FL	613E	RH	2815	Less Cylinder	685409	6
PBR	8807FL	626	RH	2815	Less Cylinder	685022	6
8808FL - Classroom Lock							
AUR	8808FL	613E	RH	2815	Less Cylinder	685410	6
AUR	8808FL	626	RH	2815	Less Cylinder	685023	6
PBR	8808FL	626	RH	2815	Less Cylinder	685024	6
8822FL - Dormitory or Exit Lock							
AUR	8822FL	613E	RH	2815	Less Cylinder	685412	7
AUR	8822FL	626	RH	2815	Less Cylinder	685025	7
PBR	8822FL	613E	RH	2815	Less Cylinder	685414	7
PBR	8822FL	626	RH	2815	Less Cylinder	685026	7
8847FL - Apartment Corridor Door Lock							
AUR	8847FL	613E	RH	2815	Less Cylinder	685416	7
AUR	8847FL	626	RH	2815	Less Cylinder	685027	7
PBR	8847FL	613E	RH	2815	Less Cylinder	685417	7
PBR	8847FL	626	RH	2815	Less Cylinder	685028	7

Fax 877-888-2772, email flashship@assaabloyusa.com or use
Online Order Entry at www.assaabloydss.com/extranet by clicking the FLASHship™ icon

Note: FLASHship™ reserves the right to limit quantities.

Copyright © 2015-2016, Yale Security Inc., an ASSA ABLOY Group company. All rights reserved.
Reproduction in whole or in part without the express written permission of Yale Security Inc. is prohibited.

An ASSA ABLOY Group brand

ASSA ABLOY



Augusta - AU x CN

Design	Model #	Finish	Hand	Strike	Cylinder	FLASHship™ #	Approx. Wt. Each (Lbs)
8801FL - Passage or Closet Latch							
AUCN	8801FL	613E	RH	2815	—	685399	6.5
AUCN	8801FL	626	RH	2815	—	685330	6.5
8802FL - Privacy, Bedroom or Bath Lock							
AUCN	8802FL	613E	RH	2815	—	685401	7.5
AUCN	8802FL	626	RH	2815	—	685331	7.5
8805FL - Storeroom or Closet Lock							
AUCN	8805FL	613E	RH	2815	Less Cylinder	685405	7.5
AUCN	8805FL	626	RH	2815	Less Cylinder	685332	7.5
8807FL - Entry Lock							
AUCN	8807FL	613E	RH	2815	Less Cylinder	685408	7.5
AUCN	8807FL	626	RH	2815	Less Cylinder	685333	7.5
8808FL - Classroom Lock							
AUCN	8808FL	613E	RH	2815	Less Cylinder	685411	7.5
AUCN	8808FL	626	RH	2815	Less Cylinder	685334	7.5
8822FL - Dormitory or Exit Lock							
AUCN	8822FL	613E	RH	2815	Less Cylinder	685413	7.5
AUCN	8822FL	626	RH	2815	Less Cylinder	685335	7.5
8847FL - Apartment Corridor Door Lock							
AUCN	8847FL	613E	RH	2815	Less Cylinder	685415	7.5
AUCN	8847FL	626	RH	2815	Less Cylinder	685336	7.5

Mortise Cylinders and Keyblanks

Model #	Description	Key Section	Finish	Collar Size Included	FLASHship™ #	Approx. Wt. Each (Lbs)
Mortise Cylinders						
2153 x 1-1/8"	6-Pin, Keyed Random	PARA	613E	1765.250	685396	0.4
2153 x 1-1/8"	6-Pin, Keyed Random	PARA	626	1765.250	685000	0.4
2553 x 1-1/8"	6-Pin, Schlage® Keyed Random	C	613E	1765.250	685420	0.4
2553 x 1-1/8"	6-Pin, Schlage® Keyed Random	C	626	1765.250	685001	0.4
Mortise Housings						
K660 x 1-3/8"	SFIC Housing Only, Less Core	—	613E	1765.563	685421	0.4
K660 x 1-3/8"	SFIC Housing Only, Less Core	—	626	1765.563	685002	0.4

Model #	Description	Key Section	FLASHship™ #	Approx. Wt. Each (Lbs)
Keyblanks				
RN11	6-Pin Blank	PARA	685006	0.1 *

*Minimum quantity of 50

Fax 877-888-2772, email flashship@assaabloyusa.com or use Online Order Entry at www.assaabloydss.com/extranet by clicking the FLASHship™ icon

Note: FLASHship™ reserves the right to limit quantities.

Copyright © 2015-2016, Yale Security Inc., an ASSA ABLOY Group company. All rights reserved. Reproduction in whole or in part without the express written permission of Yale Security Inc. is prohibited.



Augusta - AU



Monroe - MO



Pacific Beach - PB

Design	Model #	Finish	Strike	Cylinder	FLASHship™ #	Approx. Wt. Each (Lbs)
4701LN - Passage or Closet Latch						
AU	4701LN	613E	497 ANSI	—	685370	4
AU	4701LN	626	497 ANSI	—	685045	4
MO	4701LN	613E	497 ANSI	—	685372	4
MO	4701LN	626	497 ANSI	—	685239	4
PB	4701LN	613E	497 ANSI	—	685371	4
PB	4701LN	626	497 ANSI	—	685046	4
4702LN - Privacy, Bedroom or Bath Lock						
AU	4702LN	613E	497 ANSI	—	685373	4
AU	4702LN	626	497 ANSI	—	685047	4
MO	4702LN	613E	497 ANSI	—	685375	4
MO	4702LN	626	497 ANSI	—	685240	4
PB	4702LN	613E	497 ANSI	—	685374	4
PB	4702LN	626	497 ANSI	—	685048	4
4705LN - Storeroom or Closet Lock						
AU	4705LN	613E	497 ANSI	1804, 6-Pin, PARA Keyed Random	685376	5
AU	4705LN	613E	497 ANSI	2804, 6-Pin, Schlage® C Keyed Random	685377	5
AU	4705LN	626	497 ANSI	1804, 6-Pin, PARA Keyed Random	685049	5
AU	4705LN	626	497 ANSI	2804, 6-Pin, Schlage® C Keyed Random	685050	5
MO	4705LN	613E	497 ANSI	1804, 6-Pin, PARA Keyed Random	685380	5
MO	4705LN	613E	497 ANSI	2804, 6-Pin, Schlage® C Keyed Random	685381	5
MO	4705LN	626	497 ANSI	1804, 6-Pin, PARA Keyed Random	685241	5
MO	4705LN	626	497 ANSI	2804, 6-Pin, Schlage® C Keyed Random	685242	5
PB	4705LN	613E	497 ANSI	1804, 6-Pin, PARA Keyed Random	685378	5
PB	4705LN	613E	497 ANSI	2804, 6-Pin, Schlage® C Keyed Random	685379	5
PB	4705LN	626	497 ANSI	1804, 6-Pin, PARA Keyed Random	685051	5
PB	4705LN	626	497 ANSI	2804, 6-Pin, Schlage® C Keyed Random	685052	5
4705LN - Storeroom or Closet Lock (Small Format Interchangeable Core)						
BAU	4705LN	613E	497 ANSI	Less Core	685382	5
BAU	4705LN	626	497 ANSI	Less Core	685053	5
4707LN - Entry Lock						
AU	4707LN	613E	497 ANSI	1804, 6-Pin, PARA Keyed Random	685383	5
AU	4707LN	613E	497 ANSI	2804, 6-Pin, Schlage® C Keyed Random	685384	5
AU	4707LN	626	497 ANSI	1804, 6-Pin, PARA Keyed Random	685054	5
AU	4707LN	626	497 ANSI	2804, 6-Pin, Schlage® C Keyed Random	685055	5

Fax 877-888-2772, email flashship@assaabloyusa.com or use
Online Order Entry at www.assaabloydss.com/extranet by clicking the FLASHship™ icon

Note: FLASHship™ reserves the right to limit quantities.

Copyright © 2015-2016, Yale Security Inc., an ASSA ABLOY Group company. All rights reserved.
Reproduction in whole or in part without the express written permission of Yale Security Inc. is prohibited.

An ASSA ABLOY Group brand

ASSA ABLOY

4700LN Series Grade 1 Cylindrical Locks 2-3/4" Backset



Augusta - AU



Monroe - MO



Pacific Beach - PB

Design	Model #	Finish	Strike	Cylinder	FLASHship™ #	Approx. Wt. Each (Lbs)
4707LN - Entry Lock (Cont)						
MO	4707LN	613E	497 ANSI	1804, 6-Pin, PARA Keyed Random	685387	5
MO	4707LN	613E	497 ANSI	2804, 6-Pin, Schlage® C Keyed Random	685397	5
MO	4707LN	626	497 ANSI	1804, 6-Pin, PARA Keyed Random	685243	5
MO	4707LN	626	497 ANSI	2804, 6-Pin, Schlage® C Keyed Random	685244	5
PB	4707LN	613E	497 ANSI	1804, 6-Pin, PARA Keyed Random	685385	5
PB	4707LN	613E	497 ANSI	2804, 6-Pin, Schlage® C Keyed Random	685386	5
PB	4707LN	626	497 ANSI	1804, 6-Pin, PARA Keyed Random	685056	5
PB	4707LN	626	497 ANSI	2804, 6-Pin, Schlage® C Keyed Random	685057	5
4707LN - Entry Lock (Small Format Interchangeable Core)						
BAU	4707LN	613E	497 ANSI	Less Core	685388	5
BAU	4707LN	626	497 ANSI	Less Core	685058	5
4708LN - Classroom Lock						
AU	4708LN	613E	497 ANSI	1804, 6-Pin, PARA Keyed Random	685389	5
AU	4708LN	613E	497 ANSI	2804, 6-Pin, Schlage® C Keyed Random	685390	5
AU	4708LN	626	497 ANSI	1804, 6-Pin, PARA Keyed Random	685059	5
AU	4708LN	626	497 ANSI	2804, 6-Pin, Schlage® C Keyed Random	685060	5
MO	4708LN	613E	497 ANSI	1804, 6-Pin, PARA Keyed Random	685393	5
MO	4708LN	613E	497 ANSI	2804, 6-Pin, Schlage® C Keyed Random	685394	5
MO	4708LN	626	497 ANSI	1804, 6-Pin, PARA Keyed Random	685245	5
MO	4708LN	626	497 ANSI	2804, 6-Pin, Schlage® C Keyed Random	685246	5
PB	4708LN	613E	497 ANSI	1804, 6-Pin, PARA Keyed Random	685391	5
PB	4708LN	613E	497 ANSI	2804, 6-Pin, Schlage® C Keyed Random	685392	5
PB	4708LN	626	497 ANSI	1804, 6-Pin, PARA Keyed Random	685061	5
PB	4708LN	626	497 ANSI	2804, 6-Pin, Schlage® C Keyed Random	685062	5
4708LN - Classroom Lock (Small Format Interchangeable Core)						
BAU	4708LN	613E	497 ANSI	Less Core	685395	5
BAU	4708LN	626	497 ANSI	Less Core	685063	5

Fax 877-888-2772, email flashship@assaabloyusa.com or use Online Order Entry at www.assaabloydss.com/extranet by clicking the FLASHship™ icon

Note: FLASHship™ reserves the right to limit quantities.

Copyright © 2015-2016, Yale Security Inc., an ASSA ABLOY Group company. All rights reserved. Reproduction in whole or in part without the express written permission of Yale Security Inc. is prohibited.



Augusta - AU



Monroe - MO



Pacific Beach - PB

Design	Model #	Finish	Strike	Cylinder	FLASHship™ #	Approx. Wt. Each (Lbs)
4601LN - Passage or Closet Latch						
AU	4601LN	613E	497 ANSI	—	685307	4
AU	4601LN	626	497 ANSI	—	685089	4
MO	4601LN	613E	497 ANSI	—	685360	4
MO	4601LN	626	497 ANSI	—	685247	4
PB	4601LN	613E	497 ANSI	—	685308	4
PB	4601LN	626	497 ANSI	—	685090	4
4602LN - Privacy, Bedroom or Bath Lock						
AU	4602LN	613E	497 ANSI	—	685309	4
AU	4602LN	626	497 ANSI	—	685091	4
MO	4602LN	613E	497 ANSI	—	685361	4
MO	4602LN	626	497 ANSI	—	685248	4
PB	4602LN	613E	497 ANSI	—	685310	4
PB	4602LN	626	497 ANSI	—	685092	4
4605LN - Storeroom or Closet Lock						
AU	4605LN	613E	497 ANSI	1806, 6-Pin, PARA Keyed Random	685311	5
AU	4605LN	613E	497 ANSI	2806, 6-Pin, Schlage® C Keyed Random	685312	5
AU	4605LN	626	497 ANSI	1806, 6-Pin, PARA Keyed Random	685093	5
AU	4605LN	626	497 ANSI	2806, 6-Pin, Schlage® C Keyed Random	685094	5
MO	4605LN	613E	497 ANSI	1806, 6-Pin, PARA Keyed Random	685362	5
MO	4605LN	613E	497 ANSI	2806, 6-Pin, Schlage® C Keyed Random	685363	5
MO	4605LN	626	497 ANSI	1806, 6-Pin, PARA Keyed Random	685249	5
MO	4605LN	626	497 ANSI	2806, 6-Pin, Schlage® C Keyed Random	685250	5
PB	4605LN	613E	497 ANSI	1806, 6-Pin, PARA Keyed Random	685313	5
PB	4605LN	613E	497 ANSI	2806, 6-Pin, Schlage® C Keyed Random	685314	5
PB	4605LN	626	497 ANSI	1806, 6-Pin, PARA Keyed Random	685095	5
PB	4605LN	626	497 ANSI	2806, 6-Pin, Schlage® C Keyed Random	685096	5
4605LN - Storeroom or Closet Lock (Small Format Interchangeable Core)						
BAU	4605LN	613E	497 ANSI	Less Core	685315	5
BAU	4605LN	626	497 ANSI	Less Core	685097	5
4607LN - Entry Lock						
AU	4607LN	613E	497 ANSI	1806, 6-Pin, PARA Keyed Random	685316	5
AU	4607LN	613E	497 ANSI	2806, 6-Pin, Schlage® C Keyed Random	685317	5
AU	4607LN	626	497 ANSI	1806, 6-Pin, PARA Keyed Random	685098	5
AU	4607LN	626	497 ANSI	2806, 6-Pin, Schlage® C Keyed Random	685099	5
MO	4607LN	613E	497 ANSI	1806, 6-Pin, PARA Keyed Random	685364	5
MO	4607LN	613E	497 ANSI	2806, 6-Pin, Schlage® C Keyed Random	685365	5
MO	4607LN	626	497 ANSI	1806, 6-Pin, PARA Keyed Random	685251	5
MO	4607LN	626	497 ANSI	2806, 6-Pin, Schlage® C Keyed Random	685252	5
PB	4607LN	613E	497 ANSI	1806, 6-Pin, PARA Keyed Random	685318	5
PB	4607LN	613E	497 ANSI	2806, 6-Pin, Schlage® C Keyed Random	685319	5
PB	4607LN	626	497 ANSI	1806, 6-Pin, PARA Keyed Random	685100	5
PB	4607LN	626	497 ANSI	2806, 6-Pin, Schlage® C Keyed Random	685101	5

Fax 877-888-2772, email flashship@assaabloyusa.com or use
Online Order Entry at www.assaabloydss.com/extranet by clicking the FLASHship™ icon

Note: FLASHship™ reserves the right to limit quantities.

Copyright © 2015-2016, Yale Security Inc., an ASSA ABLOY Group company. All rights reserved.
Reproduction in whole or in part without the express written permission of Yale Security Inc. is prohibited.

An ASSA ABLOY Group brand

ASSA ABLOY

4600LN Series Grade 2 Cylindrical Locks 2-3/4" & 2-3/8" Backset



Augusta - AU



Monroe - MO



Pacific Beach - PB

Design	Model #	Finish	Strike	Cylinder	FLASHship™ #	Approx. Wt. Each (Lbs)
4607LN - Entry Lock (Small Format Interchangeable Core)						
BAU	4607LN	613E	497 ANSI	Less Core	685320	5
BAU	4607LN	626	497 ANSI	Less Core	685102	5
4608LN - Classroom Lock						
AU	4608LN	613E	497 ANSI	1806, 6-Pin, PARA Keyed Random	685321	5
AU	4608LN	613E	497 ANSI	2806, 6-Pin, Schlage® C Keyed Random	685322	5
AU	4608LN	626	497 ANSI	1806, 6-Pin, PARA Keyed Random	685103	5
AU	4608LN	626	497 ANSI	2806, 6-Pin, Schlage® C Keyed Random	685104	5
MO	4608LN	613E	497 ANSI	1806, 6-Pin, PARA Keyed Random	685366	5
MO	4608LN	613E	497 ANSI	2806, 6-Pin, Schlage® C Keyed Random	685367	5
MO	4608LN	626	497 ANSI	1806, 6-Pin, PARA Keyed Random	685253	5
MO	4608LN	626	497 ANSI	2806, 6-Pin, Schlage® C Keyed Random	685254	5
PB	4608LN	613E	497 ANSI	1806, 6-Pin, PARA Keyed Random	685323	5
PB	4608LN	613E	497 ANSI	2806, 6-Pin, Schlage® C Keyed Random	685324	5
PB	4608LN	626	497 ANSI	1806, 6-Pin, PARA Keyed Random	685105	5
PB	4608LN	626	497 ANSI	2806, 6-Pin, Schlage® C Keyed Random	685106	5
4608LN - Classroom Lock (Small Format Interchangeable Core)						
BAU	4608LN	613E	497 ANSI	Less Core	685325	5
BAU	4608LN	626	497 ANSI	Less Core	685107	5
4628LN - Communicating Passage Lock						
AU	4628LN	613E	497 ANSI	—	685326	5
AU	4628LN	626	497 ANSI	—	685108	5
MO	4628LN	613E	497 ANSI	—	685368	5
MO	4628LN	626	497 ANSI	—	685255	5
PB	4628LN	613E	497 ANSI	—	685327	5
PB	4628LN	626	497 ANSI	—	685109	5
4655LN - Dummy Trim						
AU	4655LN	613E	—	—	685328	2
AU	4655LN	626	—	—	685110	2
MO	4655LN	613E	—	—	685369	2
MO	4655LN	626	—	—	685256	2
PB	4655LN	613E	—	—	685329	2
PB	4655LN	626	—	—	685111	2
4600LN Series Grade 2 Cylindrical Locks 2-3/8" Backset						
AU	4601LN	626	71S	Less Core	686098	5
AU	4602LN	626	71S	Less Core	686099	5
AU	4605LN	626	71S	2806, 6-Pin, Schlage® C Keyed Random	686100	5
AU	4607LN	626	71S	2806, 6-Pin, Schlage® C Keyed Random	686101	5

Fax 877-888-2772, email flashship@assaabloyusa.com or use Online Order Entry at www.assaabloydss.com/extranet by clicking the FLASHship™ icon

Note: FLASHship™ reserves the right to limit quantities.

Copyright © 2015-2016, Yale Security Inc., an ASSA ABLOY Group company. All rights reserved. Reproduction in whole or in part without the express written permission of Yale Security Inc. is prohibited.



Carolina - CA



Design	Model #	Finish	Strike	Cylinder	FLASHship™ #	Approx. Wt. Each (Lbs)
4601 - Passage or Closet Latch						
CA	4601	630	371	—	685257	2
4602 - Privacy, Bedroom or Bath Lock						
CA	4602	630	371	—	685258	2
4605 - Storeroom or Closet Lock						
CA	4605	630	371	1805, 6-Pin, PARA Keyed Random	685262	2.5
CA	4605	630	371	2805, 6-Pin, Schlage® C Keyed Random	685264	2.5
4605 - Storeroom or Closet Lock (Small Format Interchangeable Core)						
BCA	4605	630	371	Less Core	685266	2.5
4607 - Entry Lock						
CA	4607	630	371	1805, 6-Pin, PARA Keyed Random	685270	2.5
CA	4607	630	371	2805, 6-Pin, Schlage® C Keyed Random	685272	2.5
4607 - Entry Lock (Small Format Interchangeable Core)						
BCA	4607	630	371	Less Core	685274	2.5
4608 - Classroom Lock						
CA	4608	630	371	1805, 6-Pin, PARA Keyed Random	685281	2.5
CA	4608	630	371	2805, 6-Pin, Schlage® C Keyed Random	685283	2.5
4608 - Classroom Lock (Small Format Interchangeable Core)						
BCA	4608	630	371	Less Core	685285	2.5
4655 - Dummy Trim						
CA	4655	630	—	—	685286	1

Latchbolts						
Model #	Finish	Front	Backset	Front Width	FLASHship #	Approx. Wt. Each (Lbs)
Plain						
MCP238	626	Square	2-3/8"	1"	686037	1
MCP238	613	Square	2-3/8"	1"	686039	1
Deadlocking						
MCD238	626	Square	2-3/8"	1"	686038	1
MCD238	613	Square	2-3/8"	1"	686040	1

Strikes for Cylindrical Locks						
Model #	Finish	Description	FLASHship #	Approx. Wt. Each (lbs)		
70S	626	Full lip Strike with anti-rattle tab	686041	1		
70S	613	Full lip Strike with anti-rattle tab	686044	1		
71S	626	Full lip Strike with anti-rattle tab, rounded corners	686042	1		
71S	613	Full lip Strike with anti-rattle tab, rounded corners	686045	1		
371	626	T-Strike for knob & lever	686043	1		
371	613	T-Strike for knob & lever	686046	1		
497	626	ANSI 4-7/8" Curved Lip Strike, 1-1/2" Lip to Center	686092	1		

Fax 877-888-2772, email flashship@assaabloyusa.com or use
Online Order Entry at www.assaabloydss.com/extranet by clicking the FLASHship™ icon

Note: FLASHship™ reserves the right to limit quantities.

Copyright © 2015-2016, Yale Security Inc., an ASSA ABLOY Group company. All rights reserved.
Reproduction in whole or in part without the express written permission of Yale Security Inc. is prohibited.

An ASSA ABLOY Group brand

ASSA ABLOY

D Series Grade 2 Cylindrical Deadbolts



D292 Deadbolt



D212 Deadbolt



B-D112 Deadbolt

Model #	Finish	Strike	Cylinder	FLASHship™ #	Approx. Wt. Each (Lbs)
Cylinder x Thumbturn					
D112	613E	D243	1807, 6-Pin, PARA Keyed Random	686048	2
D112	613E	D243	2807, 6-Pin, Schlage® C Keyed Random	686050	2
D112	626	D243	1807, 6-Pin, PARA Keyed Random	686047	2
D112	626	D243	2807, 6-Pin, Schlage® C Keyed Random	686049	2
D212	613E	D243	1807, 6-Pin, PARA Keyed Random	685337	2
D212	613E	D243	2807, 6-Pin, Schlage® C Keyed Random	685338	2
D212	626	D243	1807, 6-Pin, PARA Keyed Random	685133	2
D212	626	D243	2807, 6-Pin, Schlage® C Keyed Random	685134	2
Cylinder x Thumbturn (Small Format Interchangeable Core)					
B-D112	613E	D243	Less Core	686052	2
B-D112	626	D243	Less Core	686051	2
B-D212	613E	D243	Less Core	685339	2
B-D212	626	D243	Less Core	685135	2
Cylinder x Cylinder					
D122	613E	D243	1808, 6-Pin, PARA Keyed Random	686054	2
D122	613E	D243	2808, 6-Pin, Schlage® C Keyed Random	686056	2
D122	626	D243	1808, 6-Pin, PARA Keyed Random	686053	2
D122	626	D243	2808, 6-Pin, Schlage® C Keyed Random	686055	2
D222	613E	D243	1808, 6-Pin, PARA Keyed Random	685340	2
D222	613E	D243	2808, 6-Pin, Schlage® C Keyed Random	685341	2
D222	626	D243	1808, 6-Pin, PARA Keyed Random	685136	2
D222	626	D243	2808, 6-Pin, Schlage® C Keyed Random	685137	2
Cylinder x Cylinder (Small Format Interchangeable Core)					
B-D122	613E	D243	Less Core	686058	2
B-D122	626	D243	Less Core	686057	2
B-D222	613E	D243	Less Core	685342	2
B-D222	626	D243	Less Core	685138	2
Cylinder x Classroom					
D162	613E	D243	1807, 6-Pin, PARA Keyed Random	686060	2
D162	613E	D243	2807, 6-Pin, Schlage® C Keyed Random	686062	2
D162	626	D243	1807, 6-Pin, PARA Keyed Random	686059	2
D162	626	D243	2807, 6-Pin, Schlage® C Keyed Random	686061	2
D262	613E	D243	1807, 6-Pin, PARA Keyed Random	686067	2
D262	613E	D243	2807, 6-Pin, Schlage® C Keyed Random	686068	2
D262	626	D243	1807, 6-Pin, PARA Keyed Random	686065	2
D262	626	D243	2807, 6-Pin, Schlage® C Keyed Random	686066	2
Cylinder x Classroom (Small Format Interchangeable Core)					
B-D162	613E	D243	Less Core	686064	2
B-D162	626	D243	Less Core	686063	2
B-D262	613E	D243	Less Core	686070	2
B-D262	626	D243	Less Core	686069	2
Blank Plate x Thumbturn					
D242	613E	D243	—	685343	2
D242	626	D243	—	685139	2
Occupancy Indicator x Thumbturn					
D292	613E	D243	—	685419	2
D292	626	D243	—	685418	2
Deadbolt Assemblies					
D38	613	2-3/8"	1"	686072	1
D38	626	2-3/8"	1"	686071	1

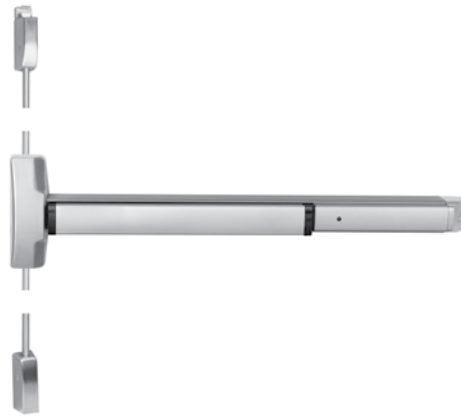
Fax 877-888-2772, email flashship@assaabloyusa.com or use Online Order Entry at www.assaabloydss.com/extranet by clicking the FLASHship™ icon

Note: FLASHship™ reserves the right to limit quantities.

Copyright © 2015-2016, Yale Security Inc., an ASSA ABLOY Group company. All rights reserved. Reproduction in whole or in part without the express written permission of Yale Security Inc. is prohibited.



6000 Rim



6110 Surface Vertical Rod

Model #	Description	Finish	Hand*	Strike	FLASHship™ #	Approx. Wt. Each (Lbs)
6100 - Rim						
6100-36	Rim Exit Device, 36"	630	—	757F	686111	11
6100-48	Rim Exit Device, 48"	630	—	757F	686112	11
6100F-36	3 Hour Fire Rated Rim Exit Device, 36"	630	—	757F	686113	11
6100F-48	3 Hour Fire Rated Rim Exit Device, 48"	689	—	757F	686114	11
6110 - Surface Vertical Rod						
6170-36	SVR Exit Device, 36"	630	RHR	791 Top, 790 Bottom	686115	15
6170F-36	SVR Exit Device, 36"	630	RHR	791 Top, 790 Bottom	686117	15
6170F-LBR-36	3 Hour Fire Rated Rim Exit Device, 36" - Less Bottom Rod	630	RHR	791 Top, 790 Bottom	686119	15

Fax 877-888-2772, email flashship@assaabloyusa.com or use
Online Order Entry at www.assaabloydss.com/extranet by clicking the FLASHship™ icon

Note: FLASHship™ reserves the right to limit quantities.

Copyright © 2015-2016, Yale Security Inc., an ASSA ABLOY Group company. All rights reserved.
Reproduction in whole or in part without the express written permission of Yale Security Inc. is prohibited.

An ASSA ABLOY Group brand

ASSA ABLOY

2100 and 1800 Series Grade 1 Flatbar Exit Devices



2100 Rim



2110 Surface Vertical Rod



1800 Rim



1810 Surface Vertical Rod

Model #	Description	Finish	Hand*	Strike	FLASHship™ #	Approx. Wt. Each (Lbs)
2100 - Rim						
2100-36	Rim Exit Device, 36"	630	—	757F	685148	11
2100-36	Rim Exit Device, 36"	689	—	757F	686021	11
2100WS	Rim Exit Device, 36"	689	—	757F	686109	11
2100WS	Rim Exit Device, 36"	630	—	757F	686110	11
2100-48	Rim Exit Device, 48"	630	—	757F	685149	11
2100-48	Rim Exit Device, 48"	689	—	757F	686025	11
2100F-36	3 Hour Fire Rated Rim Exit Device, 36"	630	—	757F	685150	11
2100F-36	3 Hour Fire Rated Rim Exit Device, 36"	689	—	757F	686022	11
2100F-48	3 Hour Fire Rated Rim Exit Device, 48"	630	—	757F	685151	11
2100F-48	3 Hour Fire Rated Rim Exit Device, 48"	689	—	757F	686026	11
2110 - Surface Vertical Rod						
2110-36	SVR Exit Device, 36"	630	RHR	791 Top, 790 Bottom	685152	15
2110-36	SVR Exit Device, 36"	689	RHR	791 Top, 790 Bottom	686023	15
2110F-36	3 Hour Fire Rated SVR Exit Device, 36"	630	RHR	791 Top, 790 Bottom	685154	15
2110F-36	3 Hour Fire Rated SVR Exit Device, 36"	689	RHR	791 Top, 790 Bottom	686024	15
1800 - Rim						
1800-36	Rim Exit Device, 36"	689	—	757F	685163	11
1800-36	Rim Exit Device, 36"	695	—	757F	685287	11
1800-48	Rim Exit Device, 48"	689	—	757F	685164	12
1800-48	Rim Exit Device, 48"	695	—	757F	685288	12
1800F-36	3 Hour Fire Rated Rim Exit Device, 36"	689	—	757F	685165	11
1800F-36	3 Hour Fire Rated Rim Exit Device, 36"	695	—	757F	685289	11
1800F-48	3 Hour Fire Rated Rim Exit Device, 48"	689	—	757F	685166	12
1800F-48	3 Hour Fire Rated Rim Exit Device, 48"	695	—	757F	685290	12
1810 - Surface Vertical Rod						
1810-36	SVR Exit Device, 36"	689	RHR	791 Top, 790 Bottom	685167	15
1810-36	SVR Exit Device, 36"	695	RHR	791 Top, 790 Bottom	685291	15
1810F-36	3 Hour Fire Rated SVR Exit Device, 36"	689	RHR	791 Top, 790 Bottom	685169	15
1810F-36	3 Hour Fire Rated SVR Exit Device, 36"	695	RHR	791 Top, 790 Bottom	685292	15

*Units are field reversible

Fax 877-888-2772, email flashship@assaabloyusa.com or use Online Order Entry at www.assaabloydss.com/extranet by clicking the FLASHship™ icon

Note: FLASHship™ reserves the right to limit quantities.

Copyright © 2015-2016, Yale Security Inc., an ASSA ABLOY Group company. All rights reserved. Reproduction in whole or in part without the express written permission of Yale Security Inc. is prohibited.

An ASSA ABLOY Group brand

ASSA ABLOY



217F Plate Trim

210F Series: Plate Trim

Model #	Finish	Cylinder	FLASHship™ #	Approx. Wt. Each (Lbs)
Dummy Trim Pull Plate				
214F	689	—	685178	1
214F	695	—	685293	1
Nightlatch Cylinder x Pull				
217F	689	Less Cylinder	685179	1
217F	695	Less Cylinder	685294	1

Note: See page 25 for cylinder options



Augusta - AU



Pacific Beach - PB

440F Series: Rose Trim

Design	Model #	Finish	Cylinder	FLASHship™ #	Approx. Wt. Each (Lbs)
Nightlatch					
AU	441F	626	1802, 6-Pin, PARA Keyed Random	686019	2.5
AU	441F	626	2802, 6-Pin, Schlage® C Keyed Random	686020	2.5
AU	441F	689	1802, 6-Pin, PARA Keyed Random	686015	2.5
AU	441F	689	2802, 6-Pin, Schlage® C Keyed Random	686016	2.5
Classroom					
AU	446F	626	1802, 6-Pin, PARA Keyed Random	685180	2.5
AU	446F	626	2802, 6-Pin, Schlage® C Keyed Random	685181	2.5
AU	446F	689	1802, 6-Pin, PARA Keyed Random	686017	2.5
AU	446F	689	2802, 6-Pin, Schlage® C Keyed Random	686018	2.5
AU	446F	695	1802, 6-Pin, PARA Keyed Random	685299	2.5
AU	446F	695	2802, 6-Pin, Schlage® C Keyed Random	685300	2.5
PB	446F	626	1802, 6-Pin, PARA Keyed Random	685182	2.5
PB	446F	626	2802, 6-Pin, Schlage® C Keyed Random	685183	2.5
Classroom (Small Format Interchangeable Core)					
BAU	446F	626	Less Core	685184	2.5
BAU	446F	695	Less Core	685303	2.5
Dummy Free-Wheeling Lever					
AU	448F	626	—	685185	2.5
AU	448F	695	—	685304	2.5
PB	448F	626	—	685186	2.5
PB	448F	695	—	685305	2.5

Fax 877-888-2772, email flashship@assaabloyusa.com or use
Online Order Entry at www.assaabloydss.com/extranet by clicking the FLASHship™ icon

Note: FLASHship™ reserves the right to limit quantities.

Copyright © 2015-2016, Yale Security Inc., an ASSA ABLOY Group company. All rights reserved.
Reproduction in whole or in part without the express written permission of Yale Security Inc. is prohibited.

An ASSA ABLOY Group brand

ASSA ABLOY



426F Escutcheon Trim



620F Escutcheon Trim



630F Escutcheon Trim



M200 Series

420F Series: Escutcheon Trim

Design	Model #	Finish	Hand*	Cylinder	FLASHship™ #	Approx. Wt. Each (Lbs)
Classroom/Storeroom						
AU	426F	630	RHR	Less Cylinder	685187	2.7
AU	426F	695	RHR	Less Cylinder	685295	2.7
PB	426F	630	RHR	Less Cylinder	685188	2.7
PB	426F	695	RHR	Less Cylinder	685296	2.7
Passage/Dummy						
AU	428F	630	RHR	—	685189	2.7
AU	428F	695	RHR	—	685297	2.7
PB	428F	630	RHR	—	685190	2.7
PB	428F	695	RHR	—	685298	2.7

620F Series: Escutcheon Trim

Design	Model #	Finish	Hand*	Cylinder	FLASHship™ #	Approx. Wt. Each (Lbs)
Classroom/Storeroom						
CO	622F	630	RHR	Less Cylinder	686102	5
AU	626F	630	RHR	Less Cylinder	686126	5
PB	626F	630	RHR	Less Cylinder	686127	5
Passage/Dummy						
CO	624F	630	RHR	—	686103	5
AU	628F	630	RHR	—	686128	5
PB	628F	630	RHR	—	686129	5

630F Series: Escutcheon Trim

Design	Model #	Finish	Hand*	Cylinder	FLASHship™ #	Approx. Wt. Each (Lbs)
Nightlatch						
—	632F	630	RHR	Less Cylinder	686243	5
Dummy						
—	634F	630	RHR	Less Cylinder	686244	5

Note: See page 25 for cylinder options

*Units are field reversible.

Fax 877-888-2772, email flashship@assaabloyusa.com or use Online Order Entry at www.assaabloydss.com/extranet by clicking the FLASHship™ icon

Note: FLASHship™ reserves the right to limit quantities.

Copyright © 2015-2016, Yale Security Inc., an ASSA ABLOY Group company. All rights reserved. Reproduction in whole or in part without the express written permission of Yale Security Inc. is prohibited.



M200 Series: Removable Mullions

Model #	Description	FLASHship™ #	Approx. Wt. Each (Lbs)
For 8 Ft. Openings			
M200-8	Complete for Panic Exits	685202	37
M200F-8	Complete for Fire Exits	685203	37

Cylinders for Exit Device Trims

Model #	Description	Key Section	Finish	Collar Size Included	FLASHship™ #	Approx. Wt. Each (Lbs)
Rim Cylinders						
1109	6-Pin, Keyed Random	PARA	613E	1765.250	685344	0.4
1109	6-Pin, Keyed Random	PARA	626	1765.250	685003	0.4
2109	6-Pin, Schlage® Keyed Random	C	613E	1765.250	685345	0.4
2109	6-Pin, Schlage® Keyed Random	C	626	1765.250	685004	0.4
Rim Housings						
K680 x 1-3/8"	SFIC Housing Only, Less Core	—	613E	1765.375	685346	0.5
K680 x 1-3/8"	SFIC Housing Only, Less Core	—	626	1765.375	685005	0.5

Miscellaneous Hardware for Exit Devices

Model #	Description	Finish	FLASHship™ #	Approx. Wt. Each (Lbs)
Extension Rods - For All Exit Device Series				
2010-12	12" (305mm) Length	630	685204	1
2010-12	12" (305mm) Length	689	685205	1
2010-12	12" (305mm) Length	695	685306	1
Shim Kits for 2100 Series				
223	For 2100(F) rim	693	686027	1
224	For 2110(F) SVR	693	686028	1
Strike Pack				
793	Optional for double door applications	—	686029	1

Stand-Alone Door Alarm

Model #	Description	Finish	FLASHship™ #	Approx. Wt. Each (Lbs)
SDA16	Battery-operated door alarm	—	686030	3

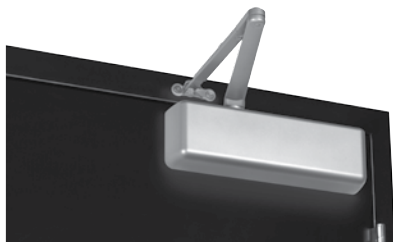
Fax 877-888-2772, email flashship@assaabloyusa.com or use Online Order Entry at www.assaabloydss.com/extranet by clicking the FLASHship™ icon

Note: FLASHship™ reserves the right to limit quantities.

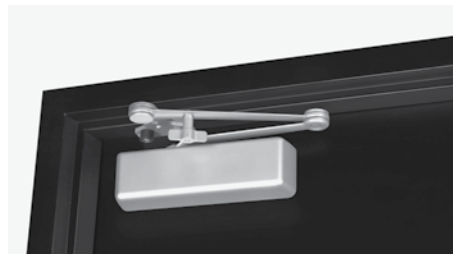
Copyright © 2015-2016, Yale Security Inc., an ASSA ABLOY Group company. All rights reserved. Reproduction in whole or in part without the express written permission of Yale Security Inc. is prohibited.

An ASSA ABLOY Group brand

ASSA ABLOY



5801 Non-Hold Open



5821T Hold Open

5800 Series: Cast Iron

Model #	Description	Finish	FLASHship™ #	Approx. Wt. Each (Lbs)
Non-Hold Open With Sleeve Nuts				
5801 x SN	Multi-Size 1-6	689	685230	12
5801 x SN	Multi-Size 1-6	690	685351	12
Heavy Duty Parallel Arm Non-Hold Open, With Sleeve Nuts				
5821 x SN	Stop Only, Multi-Size 1-6	689	685232	14
5821 x SN	Stop Only, Multi-Size 1-6	690	685352	14
Hold Open With Sleeve Nuts				
5811 x SN	Multi-Size 1-6	689	685231	12
5811 x SN	Multi-Size 1-6	690	685353	12
Heavy Duty Parallel Arm Hold Open, With Sleeve Nuts				
5821T x SN	Holder/Stop Thumbturn, Multi-Size 1-6	689	685233	14
5821T x SN	Holder/Stop Thumbturn, Multi-Size 1-6	690	685354	14
Accessories				
SN-134	Sleeve Nut Pkg., 1-3/4" Door	689	685225	0.2
SN-134	Sleeve Nut Pkg., 1-3/4" Door	690	685355	0.2
5800RDP	Narrow Frame Drop Plate, Regular Arm	689	686031	4
5800RDP	Narrow Frame Drop Plate, Regular Arm	690	686032	4
5800PDP	Narrow Top Rail Drop Plate, Parallel Arm	689	686033	4
5800PDP	Narrow Top Rail Drop Plate, Parallel Arm	690	686034	4

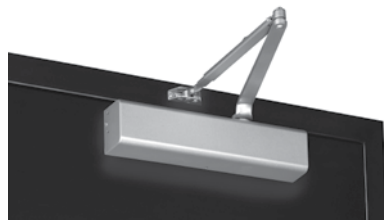
Notes:

- Closers tri-packed
- Case quantity = 4
- SN-134 = 4 per pack; supplied standard with all 5800 door closers
- FLASHship™ reserves the right to limit quantities
- For heavy-duty parallel rigid arm applications, specify 5821 or 5821T, stop is removable

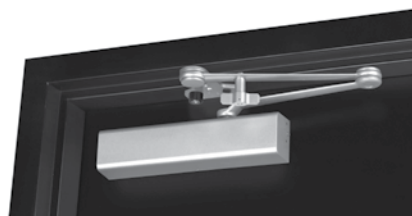
Fax 877-888-2772, email flashship@assaabloyusa.com or use Online Order Entry at www.assaabloydss.com/extranet by clicking the FLASHship™ icon

Note: FLASHship™ reserves the right to limit quantities.

Copyright © 2015-2016, Yale Security Inc., an ASSA ABLOY Group company. All rights reserved. Reproduction in whole or in part without the express written permission of Yale Security Inc. is prohibited.



2701 Non-Hold Open



2721T Hold Open

2700 Series: Architectural

Model #	Description	Finish	FLASHship™ #	Approx. Wt. Each (Lbs)
Non-Hold Open, With Sleeve Nuts				
2701 x SN	Multi-Size 1-6	689	685191	6.5
2701 x SN	Multi-Size 1-6	690	685347	6.5
Heavy Duty Non-Hold Open, With Sleeve Nuts				
2721 x SN	Stop Only, Multi-Size 1-6	689	685193	7.75
2721 x SN	Stop Only, Multi-Size 1-6	690	685348	7.75
Hold Open, With Sleeve Nuts				
2711 x SN	Multi-Size 1-6	689	685192	6.5
2711 x SN	Multi-Size 1-6	690	685349	6.5
Heavy Duty Hold Open, With Sleeve Nuts				
2721T x SN	Holder/Stop Thumbturn, Multi-Size 1-6	689	685194	7.75
2721T x SN	Holder/Stop Thumbturn, Multi-Size 1-6	690	685350	7.75
Accessories				
SN-134	Sleeve Nut Pkg., 1-3/4" Door	689	685225	0.2
SN-134	Sleeve Nut Pkg., 1-3/4" Door	690	685355	0.2
3148	Narrow Framel Drop Plate	689	686088	2
3148	Narrow Frame Drop Plate	690	686089	2
3158	Exposed-Back/Narrow Top Rail Drop Plate	689	686035	2
3158	Exposed-Back/Narrow Top Rail Drop Plate	690	686036	2

Notes:

- Closers tri-packed
- Case quantity:
2701 = 6
2711, 2721, 2721T = 4
- SN-134 = 4 per pack; supplied standard with all 2700 door closers
- FLASHship™ reserves the right to limit quantities
- For heavy-duty parallel rigid arm applications, specify 2721 or 2721T, stop is removable

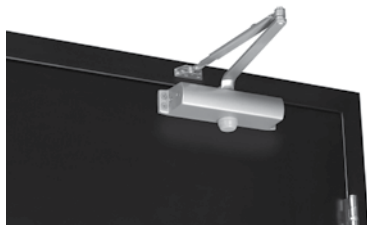
Fax 877-888-2772, email flashship@assaabloyusa.com or use
Online Order Entry at www.assaabloydss.com/extranet by clicking the FLASHship™ icon

Note: FLASHship™ reserves the right to limit quantities.

Copyright © 2015-2016, Yale Security Inc., an ASSA ABLOY Group company. All rights reserved.
Reproduction in whole or in part without the express written permission of Yale Security Inc. is prohibited.

An ASSA ABLOY Group brand

ASSA ABLOY



1101BF Non-Hold Open

1100 Series: Industrial

Model #	Description	Finish	FLASHship™ #	Approx. Wt. Each (Lbs)
Non-Hold Open With Sleeve Nuts				
1101BF x SN	Multi-Size 1-4	689	685227	6
1101BF x SN	Multi-Size 1-4	690	685357	6
1101BFCOV x SN	Multi-Size 1-4, with Cover	689	686093	6
1101BFCOV x SN	Multi-Size 1-4, with Cover	690	686094	6
1104BC x SN	Single Size 4	689	686104	6
1104BC x SN	Single Size 4	690	686105	6
Hold Open With Sleeve Nuts				
1111BF x SN	Multi-Size 1-4	689	685228	8
1111BF x SN	Multi-Size 1-4	690	685358	8
Accessories				
1100COV	Optional Cover for 1100 Series	689	685229	0.5
1100COV	Optional Cover for 1100 Series	690	685359	0.5
SN-134	Sleeve Nut Pkg., 1-3/4" Door	689	685225	0.2
SN-134	Sleeve Nut Pkg., 1-3/4" Door	690	685355	0.2

Notes:

- Closers tri-packed
- Case quantity:
1101BF = 6
1111BF = 4
- SN-134 = 4 per pack; supplied standard with all 1100 door closers
- FLASHship™ reserves the right to limit quantities.

Fax 877-888-2772, email flashship@assaabloyusa.com or use Online Order Entry at www.assaabloydss.com/extranet by clicking the FLASHship™ icon

Note: FLASHship™ reserves the right to limit quantities.

Copyright © 2015-2016, Yale Security Inc., an ASSA ABLOY Group company. All rights reserved. Reproduction in whole or in part without the express written permission of Yale Security Inc. is prohibited.



Augusta - AU

Design	Model #	Finish	Strike	Cylinder	FLASHship™ #	Approx. Wt. Each (Lbs)
With Cylinder Override						
AU	E4761LN	626	497 ANSI	1802, 6-Pin, PARA Keyed Random	685236	7.2
AU	E4761LN	626	497 ANSI	2802, 6-Pin, Schlage® C Keyed Random	685237	7.2
With Cylinder Override (Small Format Interchangeable Core)						
BAU	E4761LN	626	497 ANSI	Less Core	685238	7.2

Fax 877-888-2772, email flashship@assaabloyusa.com or use
 Online Order Entry at www.assaabloydss.com/extranet by clicking the FLASHship™ icon
Note: FLASHship™ reserves the right to limit quantities.

Copyright © 2015-2016, Yale Security Inc., an ASSA ABLOY Group company. All rights reserved.
 Reproduction in whole or in part without the express written permission of Yale Security Inc. is prohibited.

An ASSA ABLOY Group brand

ASSA ABLOY

Markar



ASSA ABLOY

The global leader in
door opening solutions

Fax 877-888-2772, email flashship@assaabloyusa.com or use
Online Order Entry at www.assaabloydss.com/extranet by clicking the FLASHship™ icon

Note: FLASHship™ reserves the right to limit quantities.

Copyright © 2015-2016, Pemko Manufacturing Co., an ASSA ABLOY Group company. All rights reserved.
Reproduction in whole or in part without the express written permission of Pemko Manufacturing Co. is prohibited.



300 Series Hinges

Model #	Description	FLASHship™ #	Approx. Wt. Each (Lbs)
14 Gauge Stainless Steel Pin & Barrel Continuous Hinges			
FM300-83	Edge Mount Pin & Barrel Hinge, Stainless Steel, 83-1/8" Long	685546	12.9
FM300-95	Edge Mount Pin & Barrel Hinge, Stainless Steel, 95" Long	685547	14.8
FM300-79	Edge Mount Pin & Barrel Hinge, Stainless Steel, 79-3/16" Long	685548	12.5
HG305-83	Edge Mount Pin & Barrel Hinge Guard, Double Return, Stainless Steel, 83-1/8" Long	685549	13.5
HG305-95	Edge Mount Pin & Barrel Hinge Guard, Double Return, Stainless Steel, 95" Long	685550	15.5
HG315-83	Edge Mount Pin & Barrel Hinge Guard, Single Return, Stainless Steel, 83-1/8" Long	685551	13.3
HG315-95	Edge Mount Pin & Barrel Hinge Guard, Single Return, Stainless Steel, 95" Long	685552	15.3

Note: FLASHship™ reserves the right to limit quantities.

Fax 877-888-2772, email flashship@assaabloyusa.com or use
Online Order Entry at www.assaabloydss.com/extranet by clicking the FLASHship™ icon
Note: FLASHship™ reserves the right to limit quantities.

Copyright © 2015-2016, Pemko Manufacturing Co., an ASSA ABLOY Group company. All rights reserved.
Reproduction in whole or in part without the express written permission of Pemko Manufacturing Co. is prohibited.

ASSA ABLOY

The global leader in
door opening solutions

McKinney



ASSA ABLOY

The global leader in
door opening solutions

Fax 877-888-2772, email flashship@assaabloyusa.com or use
Online Order Entry at www.assaabloydss.com/extranet by clicking the FLASHship™ icon

Note: FLASHship™ reserves the right to limit quantities.

Copyright © 2012, 2015-2016, McKinney Products Company, an ASSA ABLOY Group company. All rights reserved.
Reproduction in whole or in part without the express written permission of McKinney Products Company is prohibited.



1502 Spring Hinge



TA2714 Five Knuckle Hinge

Model #	Size (in.)	Options	Finish	FLASHship™ #	Approx. Wt. Per Hinge (Lbs)
Spring Hinges - Standard Weight					
1502	4-1/2" x 4-1/2"	-	US26D	685496	1
1502	4-1/2" x 4-1/2"		US3	686141	1
1502	4-1/2" x 4-1/2"		US10A	686142	1
1502	4-1/2" x 4-1/2"		US10B	686143	1
3 Knuckle Hinges - Heavy Weight					
TA786	4-1/2" x 4-1/2"	-	US26D	685521	2
3 Knuckle Hinges - Standard Weight					
TA714	4-1/2" x 4-1/2"	-	US26D	685520	1
5 Knuckle Hinges - Standard Weight					
TA2314	4-1/2" x 4-1/2"	-	US26D	685513	1
TA2314	4-1/2" x 4-1/2"	NRP	US26D	685514	1
TA2314	4-1/2" x 4-1/2"	-	US32D	685515	1
TA2314	4-1/2" x 4-1/2"	NRP	US32D	685516	1
T2714	4-1/2" x 4-1/2"	-	US26D	685498	1
TA2714	4-1/2" x 4-1/2"	-	USP	685499	1
TA2714	4-1/2" x 4-1/2"	-	US3	685500	1
TA2714	4-1/2" x 4-1/2"	-	US15	685502	1
TA2714	4-1/2" x 4-1/2"	-	US26	685503	1
TA2714	4-1/2" x 4-1/2"	-	US26D	685504	1
TA2714	4-1/2" x 4-1/2"	-	US10	685501	1
TA2714	4-1/2" x 4-1/2"	NRP	US26D	685505	1
TB2714	4-1/2" x 4-1/2"	-	US26D	685508	1
TA2714	5" x 4-1/2"	-	US26D	685509	1
5 Knuckle Hinges - Heavy Weight					
T4A3786	4-1/2" x 4-1/2"	-	US26D	685510	1.5
T4A3786	4-1/2" x 4-1/2"	NRP	US26D	685511	1.5
T4A3786	5" x 4-1/2"	-	US26D	685512	2
T4A3386	4-1/2" x 4-1/2"	-	US32D	685517	1.5
T4A3386	4-1/2" x 4-1/2"	NRP	US32D	685518	1.5
T4A3386	5" x 4-1/2"	NRP	US32D	685519	2

McKinney hinges on this page sold in quantities of 3

NRP=Non Removable Pin

Fax 877-888-2772, email flashship@assaabloyusa.com or use
Online Order Entry at www.assaabloydss.com/extranet by clicking the FLASHship™ icon
Note: FLASHship™ reserves the right to limit quantities.

Copyright © 2012, 2015-2016, McKinney Products Company, an ASSA ABLOY Group company. All rights reserved.
Reproduction in whole or in part without the express written permission of McKinney Products Company is prohibited.

ASSA ABLOY

The global leader in
door opening solutions



MacPro® MP79 Hinge



ElectroLynx® Hinge

Model #	Size (in.)	Options	Finish	FLASHship™ #	Approx. Wt. Per Hinge (Lbs)
MacPro® Hinges					
MPB79	4-1/2" x 4-1/2"	-	US26D	685527	1
MPB79	4-1/2" x 4-1/2"	NRP	US26D	685528	1
MPB79	4-1/2" x 4-1/2"	-	10BE	686095	1
MPB79	4-1/2" x 4-1/2"	NRP	10BE	686096	1
MPB79	4-1/2" x 4-1/2"	-	USP	685529	1
MPB79	4-1/2" x 4-1/2"	NRP	USP	686130	1
MPB79	4-1/2" x 4-1/2"	-	US3	686131	1
MPB79	4-1/2" x 4-1/2"	-	US26	686132	1
MPB79	4-1/2" x 4-1/2"	-	US10B	686133	1
MPB79	4-1/2" x 4-1/2"	NRP	US10B	686134	1
MPB91	4-1/2" x 4-1/2"	-	US32D	685530	1
MPB91	4-1/2" x 4-1/2"	NRP	US32D	685531	1
MP79	4-1/2" x 4-1/2"	-	US26D	685532	1.5
MP79	4-1/2" x 4-1/2"	-	10BE	686097	1.5
MP79	4-1/2" x 4-1/2"	-	USP	686135	1.5
MP79	4-1/2" x 4-1/2"	NRP	USP	686136	1.5
MP79	4-1/2" x 4-1/2"	-	US3	686137	1.5
MP79	4-1/2" x 4-1/2"	-	US26	686138	1.5
MP79	4-1/2" x 4-1/2"	NRP	US26D	686139	1.5
MP79	4-1/2" x 4-1/2"	-	US10B	686140	1.5
MPB68	4-1/2" x 4-1/2"	-	US26D	685533	1.5
MPB68	4-1/2" x 4-1/2"	NRP	US26D	685534	1.5
MPB99	4-1/2" x 4-1/2"	-	US32D	685535	1.5
MPB99	4-1/2" x 4-1/2"	NRP	US32D	685536	1.5
MPS60	4-1/2" x 4-1/2"	-	US26D	685537	1
ElectroLynx® Hinges					
TA2714	4-1/2" x 4-1/2"	QC4	US26D	685522	1
TA2714	4-1/2" x 4-1/2"	QC8	US26D	685524	1
TA2714	4-1/2" x 4-1/2"	QC12	US26D	685526	1
T4A3786	4-1/2" x 4-1/2"	QC4	US26D	685523	1.5
T4A3786	4-1/2" x 4-1/2"	QC8	US26D	685525	1.5
ElectroLynx® Cables					
QC-C003	3"	12 Wire 22AWG	-	685538	0.1
QC-C200	26"	12 Wire 22AWG	-	685539	0.1
QC-C206	32"	12 Wire 22AWG	-	685540	0.1
QC-C300	38"	12 Wire 22AWG	-	685541	0.1
QC-C306	44"	12 Wire 22AWG	-	685542	0.2
QC-C400	50"	12 Wire 22AWG	-	685543	0.2
QC-C1500	15'2"	12 Wire 22AWG	-	685544	0.7
QC-C1500P	15'2'	12 Wire 22AWG	-	685545	0.7

McKinney hinges on this page sold in quantities of 3, except ElectroLynx® hinges.

*Available for order 7/27/15

ASSA ABLOY

The global leader in
door opening solutions

Fax 877-888-2772, email flashship@assaabloyusa.com or use
Online Order Entry at www.assaabloydss.com/extranet by clicking the FLASHship™ icon

Note: FLASHship™ reserves the right to limit quantities.

Copyright © 2012, 2015-2016, McKinney Products Company, an ASSA ABLOY Group company. All rights reserved.
Reproduction in whole or in part without the express written permission of McKinney Products Company is prohibited.



PEMKO

Fax 877-888-2772, email flashship@assaabloyusa.com or use
Online Order Entry at www.assaabloydss.com/extranet by clicking the FLASHship™ icon
Note: FLASHship™ reserves the right to limit quantities.

Copyright © 2015-2016, Pemko Manufacturing Co., an ASSA ABLOY Group company. All rights reserved.
Reproduction in whole or in part without the express written permission of Pemko Manufacturing Co. is prohibited.

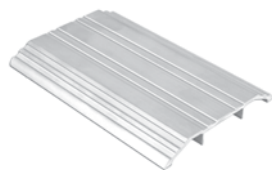
Fax FLASHship orders to 877-888-2772 or email to flashship@assaabloy.com

ASSA ABLOY

The global leader in
door opening solutions

Dallas Issue August 2016 35

PEMKO



170A Threshold



171A Threshold

Model #	Description	FLASHship™ #	Approx. Wt. Each (Lbs)
Thresholds			
151A36	3" Flat Saddle Threshold, 1/4" High, 36" Long	685553	1.4
154A36	5" Flat Saddle Threshold, 1/4" High, 36" Long	685554	2.8
170A36	4" Fluted Saddle Threshold, 1/2" High, 36" Long	685555	2.1
170A72	4" Fluted Saddle Threshold, 1/2" High, 72" Long	685558	4.1
170D36	4" Fluted Saddle Threshold, 1/2" High, 36" Long, Dark Bronze	685559	2.1
170A48	4" Fluted Saddle Threshold, 1/2" High, 48" Long	685557	2.8
170A36WS/PA	4" Fluted Saddle Threshold, 1/2" High, 36" Long with Wood Screws and Plastic Anchors	685556	2.1
171A36	5" Fluted Saddle Threshold, 1/2" High, 36" Long	685561	2.7
171A36WS/PA	5" Fluted Saddle Threshold, 1/2" High, 36" Long , With Wood Screws and Plastic Anchors	685562	2.7
171A48	5" Fluted Saddle Threshold, 1/2" High, 48" Long	685563	3.6
171A72	5" Fluted Saddle Threshold, 1/2" High, 72" Long	685564	5.4
171D36	5" Fluted Saddle Threshold, 1/2" High, 36" Long, Dark Bronze	685565	2.7
1715A36	5" Heavy Duty Saddle Threshold, 1/2" High, 36" Long	685560	5.2
172A36	6" Fluted Saddle Threshold, 1/2" High, 36" Long	685566	3.1
172A48	6" Fluted Saddle Threshold, 1/2" High, 48" Long	685567	4.1
172A72	6" Fluted Saddle Threshold, 1/2" High, 72" Long	685568	5.5
172D36	6" Fluted Saddle Threshold, 1/2" High, 36" Long, Dark Bronze	685569	3.1
2548A36	8" Fluted Saddle Threshold, 1/2" High, 36" Long	685601	4
2548A72	8" Fluted Saddle Threshold, 1/2" High, 72" Long	685602	8
270A36	4" Fluted Saddle Threshold, 1/4" High, 36" Long	685603	2
270A72	4" Fluted Saddle Threshold, 1/4" High, 72" Long	685604	3.9
271A36	5" Fluted Saddle Threshold, 1/4" High, 36" Long	685606	2.5
271A48	5" Fluted Saddle Threshold, 1/4" High, 48" Long	685608	3.3
271A72	5" Fluted Saddle Threshold, 1/4" High, 72" Long	685609	5
271D36	5" Fluted Saddle Threshold, 1/4" High, 36" Long, Dark Bronze	685610	2.5
272A36	6" Fluted Saddle Threshold, 1/4" High, 36" Long	685611	3
272A48	6" Fluted Saddle Threshold, 1/4" High, 48" Long	685613	4
272A72	6" Fluted Saddle Threshold, 1/4" High, 72" Long	685614	6.1
272D36	6" Fluted Saddle Threshold, 1/4" High, 36" Long, Dark Bronze	685615	3
2748A36	8" Fluted Saddle Threshold, 1/4" High, 36" Long	685616	3.9
2748A72	8" Fluted Saddle Threshold, 1/4" High, 72" Long	685617	7.8
2005AT36	5" Latching Panic Threshold, 1/2" High, 36" Long with TPE Seal	685584	2.5
2005AT48	5" Latching Panic Threshold, 1/2" High, 48" Long with TPE Seal	685585	3.3
2005AT72	5" Latching Panic Threshold, 1/2" High, 72" Long with TPE Seal	685586	5

ASSA ABLOY

The global leader in
door opening solutions

Fax 877-888-2772, email flashship@assaabloyusa.com or use
Online Order Entry at www.assaabloydss.com/extranet by clicking the FLASHship™ icon
Note: FLASHship™ reserves the right to limit quantities.

Copyright © 2015-2016, Pemko Manufacturing Co., an ASSA ABLOY Group company. All rights reserved.
Reproduction in whole or in part without the express written permission of Pemko Manufacturing Co. is prohibited.



210AV Door Shoe



303AS Jamb Set

Model #	Description	FLASHship™ #	Approx. Wt. Each (Lbs)
Thresholds (Cont.)			
2008STCQ380A36	4" Acoustic Threshold, 1/2" High, 36" Long with Encased Foam Seal	685587	1.7
252X3AFG36	5-1/8" Thermal Barrier Saddle Threshold, 1/2" High, 36" Long	685600	3.3
Door Shoes			
210AV36	Aluminum L Shape Door Shoe, Drip Ledge, Vinyl Bottom Seal, 36"	685588	1
210DV36	Dark, Aluminum L Shape Door Shoe, Drip Ledge, Vinyl Bottom Seal, 36"	685589	1
210DV48	Dark, Aluminum L Shape Door Shoe, Drip Ledge, Vinyl Bottom Seal, 48"	685590	1.2
216AV36	Aluminum U Shape Door Shoe, Drip Ledge, Vinyl Bottom Seal, 1-3/4" Door, 36"	685591	1.2
216DV36	Dark, Aluminum U Shape Door Shoe, Drip Ledge, Vinyl Bottom Seal, 1-3/4" Door, 36"	685592	1.2
216PWW36	Painted White, Aluminum U Shape Door Shoe, Drip Ledge, Vinyl Bottom Seal, 1-3/4" Door, 36"	685593	1.2
2173AV36	Aluminum U Shape Door Shoe, Notched Vinyl Bottom Seal, 1-3/4" Door, 36"	685595	1
2173DV36	Dark, Aluminum U Shape Door Shoe, Notched Vinyl Bottom Seal, 1-3/4" Door, 36"	685596	1
221AV36	Aluminum U Shape 3" Door Shoe/Kickplate, Vinyl Bottom Seal, 1-3/4" Door, 36"	685597	3.1
2343AV36	Aluminum Door Shoe, Notched Vinyl Bottom Seal, 1-3/16" Wide, 36"	685598	1
Jamb Sets			
303AS3684	Silicone Perimeter Door Seal Kit, Aluminum Channel, 36" x 84" Opening	685629	1.2
303AS7284	Silicone Perimeter Door Seal Kit, Aluminum Channel, 72" x 84" Opening	685630	1.4
303DS3684	Silicone Perimeter Door Seal Kit, Dark Bronze Aluminum Channel, 36" x 84" Opening	685634	1.2
303AV3684	Eco-V™ Perimeter Door Seal Kit, Aluminum Channel, 36" x 84" Opening	685631	1.2
303AV3684TK	Eco-V™ Perimeter Door Seal Kit w/Tek Screws, Aluminum Channel, 36" x 84" Opening	685632	1.2
303DV3684	Eco-V™ Perimeter Door Seal Kit, Dark Bronze Aluminum Channel, 36" x 84" Opening	685635	1.2
303AV7284	Eco-V™ Perimeter Door Seal Kit, Aluminum Channel, 72" x 84" Opening	685633	1.4
305CR3684	Perimeter Gasketing, Clear Aluminum Black Sponge EPDM Insert, 36" x 84" Opening	685638	1.2
305CN84	Split Astragal/Meeting Stile Seal, Clear Aluminum, Gray EPDM Insert, 84"	685636	0.5
305CN96	Split Astragal/Meeting Stile Seal, Clear Aluminum, Gray EPDM Insert, 96"	685637	0.6
319CN3684	Perimeter Gasketing, Clear Anodized Aluminum with Black EPDM insert, 36" x 84" Opening	685645	1.8
332CR3684	Perimeter Gasketing, Clear Anodized Aluminum with Black Sponge EPDM insert, 36" x 84" Opening	685646	1.4
Door Sweeps			
18061CNB36	Brush Door Sweep, 3/4" Clear Aluminum Channel, 5/8" Brush, 36" Long	685571	0.4
18061CNB48	Brush Door Sweep, 3/4" Clear Aluminum Channel, 5/8" Brush, 48" Long	685572	0.5
18061DNB36	Brush Door Sweep, 3/4" Dark Bronze Aluminum Channel, 5/8" Brush, 36" Long	685575	0.4

Fax 877-888-2772, email flashship@assaabloyusa.com or use
Online Order Entry at www.assaabloydss.com/extranet by clicking the FLASHship™ icon
Note: FLASHship™ reserves the right to limit quantities.

Copyright © 2015-2016, Pemko Manufacturing Co., an ASSA ABLOY Group company. All rights reserved.
Reproduction in whole or in part without the express written permission of Pemko Manufacturing Co. is prohibited.

ASSA ABLOY

The global leader in
door opening solutions

PEMKO



18061DNB Brush Door Sweep



345DV Door Bottom Sweep

Model #	Description	FLASHship™ #	Approx. Wt. Each (Lbs)
Door Sweeps (Cont.)			
18062CNB36	Brush Door Sweep, 7/8" Clear Aluminum Channel, 5/8" Brush, 36" Long	685577	0.6
18062CNB48	Brush Door Sweep, 7/8" Clear Aluminum Channel, 5/8" Brush, 48" Long	685578	0.5
18062DNB36	Brush Door Sweep, 7/8" Dark Bronze Aluminum Channel, 5/8" Brush, 36" Long	685580	0.5
18100CNB36	Brush Door Sweep, 7/8" Clear Aluminum Channel, 1" Brush, 36" Long	685581	0.5
18100CNB48	Brush Door Sweep, 7/8" Clear Aluminum Channel, 1" Brush, 48" Long	685582	0.7
18137CNB36	Brush Door Sweep, 7/8" Clear Aluminum Channel, 1-3/8" Brush, 36" Long	685583	0.5
29326CNB36	Snap Cover W/S, Clear Anodized Aluminum, Gray Nylon Brush, 36"	685626	0.8
307AV36	Door Bottom Sweep, 7/8" Gray Aluminum Channel, 1" Vinyl, 36" Long	686120	—
307AV48	Door Bottom Sweep, 7/8" Gray Aluminum Channel, 1" Vinyl, 36" Long	686121	—
315CN36	Neoprene Door Sweep, 1-1/4" Clear Aluminum Channel, 7/16" Neoprene, 36" Long	685639	0.4
315CN36TK	Neoprene Door Sweep w/Tek Screws, 1-1/4" Clear Aluminum Channel, 7/16" Neoprene, 36" Long	685640	0.4
315CN42	Neoprene Door Sweep, 1-1/4" Clear Aluminum Channel, 7/16" Neoprene, 42" Long	685641	0.5
315CN48	Neoprene Door Sweep, 1-1/4" Clear Aluminum Channel, 7/16" Neoprene, 48" Long	685642	1
315DN36	Neoprene Door Sweep, 1-1/4" Dark Bronze Aluminum Channel, 7/16" Neoprene, 36" Long	685643	0.4
315DN48	Neoprene Door Sweep, 1-1/4" Dark Bronze Aluminum Channel, 7/16" Neoprene, 48" Long	685644	1
345AV36	Door Bottom Sweep w/Rain Drip, Mill Finish Aluminum, Gray Vinyl Insert, 36" Long	685652	0.5
345AV48	Door Bottom Sweep w/Rain Drip, Mill Finish Aluminum, Gray Vinyl Insert, 48" Long	685653	0.6
345DV36	Door Bottom Sweep w/Rain Drip, Dark Bronze Aluminum, Gray Vinyl Insert, 36" Long	685655	0.5
345ANB36	Door Bottom Sweep w/Rain Drip, Mill Finish Aluminum, Nylon Brush Insert, 36" Long	685650	0.5
345A36	Door Bottom Rain Drip, Mill Finish Aluminum, 36" Long	685649	0.5
345D36	Door Bottom Rain Drip, Dark Bronze Aluminum, 36" Long	685654	0.5
345ANB48	Door Bottom Sweep with Rain Drip, Mill Finish Aluminum, Nylon Brush Insert, 48" Long	685651	0.6
3452CNB36	Door Bottom Sweep with Rain Drip, Clear Aluminum, Nylon Brush Insert, 36" Long	685648	0.5
3452AV36	Door Bottom Sweep with Rain Drip, Mill Finish Aluminum, Vinyl Insert, 36" Long	685647	0.5
Overlapping Astragals			
357SP84	Overlapping Astragals, 1/8" Thick, 2" Wide, Galvannealed Steel (11 ga), 84" Long	685661	5.9
357C84	Overlapping Astragals, 1/8" Thick, 2" Wide, Clear Anodized Aluminum, 84" Long	685659	2.1
357SP96	Overlapping Astragals, 1/8" Thick, 2" Wide, Galvannealed Steel (11 ga), 96" Long	685662	6.8
357SS84	Overlapping Astragals, 1/8" Thick, 2" Wide, Stainless Steel (11 ga), 84" Long	685663	9
357C96	Overlapping Astragals, 1/8" Thick, 2" Wide, Clear Anodized Aluminum, 96" Long	685660	2.4

ASSA ABLOY

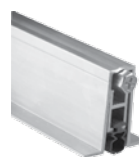
The global leader in
door opening solutions

Fax 877-888-2772, email flashship@assaabloyusa.com or use
Online Order Entry at www.assaabloydss.com/extranet by clicking the FLASHship™ icon
Note: FLASHship™ reserves the right to limit quantities.

Copyright © 2015-2016, Pemko Manufacturing Co., an ASSA ABLOY Group company. All rights reserved.
Reproduction in whole or in part without the express written permission of Pemko Manufacturing Co. is prohibited.



346C Rain Drip



411APKL Automatic Door Bottom

Model #	Description	FLASHship™ #	Approx. Wt. Each (Lbs)
Meeting Stile Split Astragal			
18041CNB84	Brush Meeting Stile Gasketing, 3/4" Clear Aluminum Channel, 3/8" Exposed Brush, 1 piece @84"	685570	0.9
18061CNB84	Brush Door Sweep, 3/4" Clear Aluminum Channel, 5/8" Brush, 84" Long	685573	0.9
18061CNB96	Brush Door Sweep, 3/4" Clear Aluminum Channel, 5/8" Brush, 96" Long	685574	1.2
18061DNB84	Brush Door Sweep, 3/4" Dark Bronze Aluminum Channel, 5/8" Brush, 84" Long	685576	0.9
18062CNB84	Brush Door Sweep, 7/8" Clear Aluminum Channel, 5/8" Brush, 84" Long	685579	0.9
29310CS84	Straight Snap-Cover Meeting Stile, Clear Anodized Aluminum, Silicone Seal, 1 piece @84"	685623	1.5
29324CNB84	Snap Cover W/S, Clear Anodized Aluminum, 1/4" x 7/8", with 3/8" Gray Nylon Brush, 1 piece @84"	685625	1.5
369AP84	Meeting Stile Mill Aluminum Pile Insert, 84"	685664	0.3
355CS84	T-Astragal, 84"	686144	
Rain Drip			
346C40	Door Top Rain Drip, 2-1/2" Clear Aluminum Projection, 40" Long	685656	1.2
346C52	Door Top Rain Drip, 2-1/2" Clear Aluminum Projection, 52" Long	685657	1.5
346C76	Door Top Rain Drip, 2-1/2" Clear Aluminum Projection, 76" Long	685658	2.2
Automatic Door Bottoms			
411APKL36	Full Mortised Auto Door Bottom, 1-3/8" x 9/16" Aluminum Channel, PemkoPrene™ Insert, Low Closing Force	685667	1.5
411ARL32	Full Mortised Auto Door Bottom, Mill Finish Aluminum with Black Sponge EPDM Insert, 32" Long	685668	1.3
411ARL36	Full Mortised Auto Door Bottom, 1-3/8" x 9/16" Aluminum Channel, Sponge EPDM Insert, Low Closing Force	685669	1.5
411ANBL36	Full Mortised Auto Door Bottom, Mill Finish Aluminum w/ Black Nylon Brush Insert, 36" Long	685666	1.5
434APKL36	Full Mortised Auto Door Bottom, 1-5/16" x 27/32" Aluminum Channel, PemkoPrene™ Insert	685673	1.6
434ARL36	Full Mortised Auto Door Bottom, Mill Finish Aluminum with Black Sponge EPDM Insert, 36" Long	685674	2.5
4131CRL36	Surface and Semi Mortised Auto Door Bottom, Clear Aluminum, Black Sponge EPDM Insert, 36" Long	685671	1.5
4131CPKL36	Surface and Semi Mortised Auto Door Bottom, Clear Aluminum, Black PemkoPrene™ Insert, 36" Long	685670	1.5
4131DRL36	Surface and Semi Mortised Auto Door Bottom, Dark Bronze Aluminum, Black Sponge EPDM Insert, 36" Long	685672	1.5
PDB411AE36	Acoustic Automatic Door Bottom, Full Mortised, Mill Finish Aluminum, Black EPDM Insert, 36" Long	685695	1.5
PDB411AE48	Acoustic Automatic Door Bottom, Full Mortised, Mill Finish Aluminum, Black EPDM Insert, 48" Long	685697	3
PDB4131DE36	Acoustic Automatic Door Bottom, Semi Mortised, Dark Bronze Anodized Aluminum, Black EPDM Insert, 36" Long	685699	1.5
Aluminum Geared Continuous Hinges			
CFM83HD1	Continuous Geared Hinge, Full Mortise, Clear Aluminum, Heavy Duty 83"	685677	6.3
CFM83SLF-HD1	Continuous Geared Hinge, Full Mortise, Short Leaf Flush, Clear Aluminum, Heavy Duty 83"	685678	6

Fax 877-888-2772, email flashship@assaabloyusa.com or use
 Online Order Entry at www.assaabloydss.com/extranet by clicking the FLASHship™ icon
 Note: FLASHship™ reserves the right to limit quantities.

Copyright © 2015-2016, Pemko Manufacturing Co., an ASSA ABLOY Group company. All rights reserved.
 Reproduction in whole or in part without the express written permission of Pemko Manufacturing Co. is prohibited.

ASSA ABLOY

The global leader in
door opening solutions

PEMKO



CFM Continuous Geared Hinges



CFS-CP Continuous Geared Hinges

Model #	Description	FLASHship™ #	Approx. Wt. Each (Lbs)
Aluminum Geared Continuous Hinges (Cont.)			
CFM83SLI-HD1	Continuous Geared Hinge, Full Mortise, Short Leaf Inset, Clear Aluminum, Heavy Duty 83"	685679	5.5
CFM95HD1	Continuous Geared Hinge, Full Mortise, Clear Aluminum, Heavy Duty 95"	685680	7.2
CFM95SLF-HD1	Continuous Geared Hinge, Full Mortise, Short Leaf Flush, Clear Aluminum, Heavy Duty 95"	685681	7.2
CFS83	Continuous Geared Hinge, Full Surface, Clear Aluminum, Standard Duty, 83"	685682	7.4
CFS83CP	Continuous Geared Hinge, Full Surface, Center Pivot, Clear Aluminum, Standard Duty, 83"	685683	7.5
CFS83HD1	Continuous Geared Hinge, Full Surface, Clear Aluminum, Heavy Duty 83"	685685	7.4
CFS83CP-HD1	Continuous Geared Hinge, Full Surface, Center Pivot, Clear Aluminum, Heavy Duty 83"	685684	7.7
DFM83HD1	Continuous Geared Hinge, Full Mortise, Dark Bronze Aluminum, Heavy Duty 83"	685686	6.3
DFS83	Continuous Geared Hinge, Full Surface, Dark Bronze Aluminum, Standard Duty, 83"	685687	7.4
Adhesive Gasket			
HSS2000-18	HSS Adhesive Intumescent Gasket, 3/64" x 7/16", 18' Roll	685688	0.2
HSS2000-21	HSS Adhesive Intumescent Gasket, 3/64" x 7/16", 21' Roll	685689	0.4
HSS2000-24	HSS Adhesive Intumescent Gasket, 3/64" x 7/16", 24' Roll	685690	0.4
HSS2000xS88D3684	Combination HSS Adhesive Intumescent Gasket and S88 Silicone Gasketing, Dark Brown, 36" x 84" Opening	685692	0.7
HSS2000xS88D4884	Combination HSS Adhesive Intumescent Gasket and S88 Silicone Gasketing, Dark Brown, 48" x 84" Opening	685693	0.8
HSS2000xS44D4884	Combination HSS Adhesive Intumescent Gasket and S44 Silicone Gasketing, Dark Brown, 48" x 84" Opening	685691	0.5
PK33BL17	PemkoPrene™ Adhesive Perimeter Gasket, 3/16" x 3/8", Black, 17' Roll	685700	0.2
PK33D17	PemkoPrene™ Adhesive Perimeter Gasket, 3/16" x 3/8", Dark Brown, 17' Roll	685702	0.2
PK33BL20	PemkoPrene™ Adhesive Perimeter Gasket, 3/16" x 3/8", Black, 20' Roll	685701	0.2
PK55D17	PemkoPrene™ Adhesive Gasket, 3/16" x 1/2", Dark, 17' Roll	685705	0.3
PK55D20	PemkoPrene™ Adhesive Gasket, 3/16" x 1/2", Dark, 20' Roll	685706	0.3
PK55BL17	PemkoPrene™ Adhesive Gasket, 3/16" x 1/2", Black, 17' Roll	685703	0.3
PK55BL20	PemkoPrene™ Adhesive Gasket, 3/16" x 1/2", Black, 20' Roll	685704	0.3
S44D17	Silicone Fin Smoke Gasket, 5/16" x 7/16", Dark 17' Roll with Self Adhesive	685713	0.5
S44D20	Silicone Fin Smoke Gasket, 5/16" x 7/16", Dark 20' Roll with Self Adhesive	685714	0.6
S44D21	Silicone Fin Smoke Gasket, 5/16" x 7/16", Dark 21' Roll with Self Adhesive	685715	0.6
S44D25	Silicone Fin Smoke Gasket, 5/16" x 7/16", Dark 25' Roll with Self Adhesive	685716	0.8
S44W17	Silicone Fin Smoke Gasket, 5/16" x 7/16", White 17' Roll with Self Adhesive	685717	0.5
S88BL17	Silicone Bulb Smoke Gasket, 1/4" x 1/2", Black, 17' Roll with Self Adhesive	685729	0.5
S88BL20	Silicone Bulb Smoke Gasket, 1/4" x 1/2", Black, 20' Roll with Self Adhesive	685730	0.6
S88BL510	Silicone Bulb Smoke Gasket, 1/4" x 1/2", Black, 510' Roll with Self Adhesive	685731	13.6

ASSA ABLOY

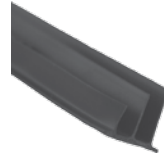
The global leader in
door opening solutions

Fax 877-888-2772, email flashship@assaabloyusa.com or use
Online Order Entry at www.assaabloydss.com/extranet by clicking the FLASHship™ icon
Note: FLASHship™ reserves the right to limit quantities.

Copyright © 2015-2016, Pemko Manufacturing Co., an ASSA ABLOY Group company. All rights reserved.
Reproduction in whole or in part without the express written permission of Pemko Manufacturing Co. is prohibited.



S44D Adhesive Gasket



S773D Adhesive Gasket

Model #	Description	FLASHship™ #	Approx. Wt. Each (Lbs)
Adhesive Gasket (Cont.)			
S88D17	Silicone Bulb Smoke Gasket, 1/4" x 1/2", Dark, 17' Roll with Self Adhesive	685732	0.5
S88D18	Silicone Bulb Smoke Gasket, 1/4" x 1/2", Dark, 18' Roll with Self Adhesive	685733	0.6
S88D20	Silicone Bulb Smoke Gasket, 1/4" x 1/2", Dark, 20' Roll with Self Adhesive	685734	0.6
S88D21	Silicone Bulb Smoke Gasket, 1/4" x 1/2", Dark, 21' Roll with Self Adhesive	685736	0.7
S88D25	Silicone Bulb Smoke Gasket, 1/4" x 1/2", Dark, 25' Roll with Self Adhesive	685737	0.7
S88D204	Silicone Bulb Smoke Gasket, 1/4" x 1/2", Dark, 204' Roll with Self Adhesive	685735	0.6
S88D510	Silicone Bulb Smoke Gasket, 1/4" x 1/2", Dark, 510' Roll with Self Adhesive	685738	13.6
S88W17	Silicone Bulb Smoke Gasket, 1/4" x 1/2", White, 17' Roll with Self Adhesive	685739	0.5
S88W20	Silicone Bulb Smoke Gasket, 1/4" x 1/2", White 20' Roll with Self Adhesive	685740	0.6
S771D7	Silicone Astragal/Meeting Stile Gasket, 9/32" x 7/16", Dark, 7' Roll with Self Adhesive	685719	0.1
S771C7	Silicone Astragal/Meeting Stile Gasket, 9/32" x 7/16", Clear, 7' Roll with Self Adhesive	685718	0.1
S772D7	Silicone Astragal/Meeting Stile Gasket, 3/16" x 1/2", Dark, 7' Roll with Self Adhesive	685720	0.1
S772D8	Silicone Astragal/Meeting Stile Gasket, 3/16" x 1/2", Dark, 8' Roll with Self Adhesive	685721	0.1
S773D17	Silicone Triple Fin Acoustic/Smoke Gasket, 3/8" x 1/2", Dark 17' Roll with Self Adhesive	685724	0.4
S773D18	Silicone Triple Fin Acoustic/Smoke Gasket, 3/8" x 1/2", Dark 18' Roll with Self Adhesive	685725	0.4
S773D20	Silicone Triple Fin Acoustic/Smoke Gasket, 3/8" x 1/2", Dark 20' Roll with Self Adhesive	685726	0.5
S773D21	Silicone Triple Fin Acoustic/Smoke Gasket, 3/8" x 1/2", Dark 21' Roll with Self Adhesive	685727	0.5
S773BL17	Silicone Triple Fin Acoustic/Smoke Gasket, 3/8" x 1/2", Black 17' Roll with Self Adhesive	685722	0.4
S773BL20	Silicone Triple Fin Acoustic/Smoke Gasket, 3/8" x 1/2", Black 20' Roll with Self Adhesive	685723	0.5
S773W17	Silicone Triple Fin Acoustic/Smoke Gasket, 3/8" x 1/2", White 17' Roll with Self Adhesive	685728	0.4
Perimeter Gasket			
369AP84	Meeting Stile Mill Aluminum Pile Insert, 84"	685664	0.3
379CR84	Adjustable Jamb W/S Clear Anodized Aluminum Sponge EPDM Seal, 84"	685665	2.2
45041CNB3684	Door Sweep, 45-Degree Retainer with 13/32" Nylon Brush Clear Anodized , 3/0 x 7/0 Opening	685675	4.3
2891AS36	1/4" x 1-1/2" x 36" Perimeter Gasket, Heavy duty, Mill Aluminum w/Silicone Insert	685619	1.2
2891AS3684	1/4" x 1-1/2" Perimeter Gasket, Heavy Duty, Mill Aluminum, Silicon Insert for 3/0 x 7/0 Opening	685620	7
2891APK3684	1/4" x 1-1/2" Perimeter Gasket, Heavy Duty, Mill Aluminum PemkoPrene™ Seal for 3/0 x 7/0 Opening	685618	7
290APK84	1/4" x 1-1/2" x 84", Jamb Weatherstrip, Mill Aluminum w/PemkoPrene™ seal	685621	1.5
29310CS84	Straight Snap-Cover Meeting Stile, Clear Anodized Aluminum, Silicone Seal, 1 piece @84"	685623	1.5

Fax 877-888-2772, email flashship@assaabloyusa.com or use
 Online Order Entry at www.assaabloydss.com/extranet by clicking the FLASHship™ icon
 Note: FLASHship™ reserves the right to limit quantities.

Copyright © 2015-2016, Pemko Manufacturing Co., an ASSA ABLOY Group company. All rights reserved.
 Reproduction in whole or in part without the express written permission of Pemko Manufacturing Co. is prohibited.

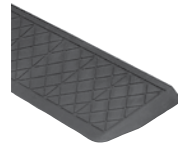
ASSA ABLOY

The global leader in
door opening solutions

PEMKO



MAG349D Adhesive Gasketing



RR1.25FMR Rubber Ramp

Model #	Description	FLASHship™ #	Approx. Wt. Each (Lbs)
Perimeter Gasket			
29324CNB36	Snap Cover Weatherstrip, Clear Anodized Aluminum, 1/4" x 7/8", with 3/8" Gray Nylon Brush, 36"	685624	0.7
29324CNB84	Snap Cover Meeting Stile, Clear Anodized Aluminum, 1/4" x 7/8", with 3/8" Gray Nylon Brush, 1 piece @84"	685625	1.5
29326CNB36	Snap Cover Weatherstrip, Clear Anodized Aluminum, 1/4" x 7/8", with 5/8" Gray Nylon Brush, 36"	685626	0.8
29326DNB36	Snap Cover Weatherstrip, Dark Bronze Anodized Aluminum, 1/4" x 7/8", with 5/8" Black Nylon Brush, 36"	685627	0.8
297AS3684	Jamb Weatherstrip Mill Aluminum w/Silicone Insert 1/4" x 13/16" for 3/0 x 7/0 Opening	685628	1.2
MAG349D-85	Magnetic Kerf-In Weatherstrip, Dark, Foam with Magnetic Insert, 85" Long	685694	0.6
Q102D-97	Pemko, 5/8" Reach, Encased Foam Kerf-In Weatherstrip, Dark, 97" Long	685709	0.3
Q103D-97	Pemko, 3/8" Reach, Encased Foam Kerf-In Weatherstrip, Dark, 97" Long	685710	0.2
Q106D-97	Pemko, 5/8" Reach, Encased Foam Kerf-In Weatherstrip, Dark, 97" Long	685711	0.3

Model #	Finish	Size	FLASHship™ #	Approx. Wt. Each (Lbs)
Lite Kits (sold in case quantities; 3 lite kits per case)				
LT-B1G	Prime Coat	5" x 20"	686073	4
LT-B1G	Prime Coat	10" x 10"	686074	4
LT-B1G	Prime Coat	4" x 25"	686075	4
LT-B1G	Prime Coat	22" x 28"	686076	8

ASSA ABLOY

The global leader in
door opening solutions

Fax 877-888-2772, email flashship@assaabloyusa.com or use
Online Order Entry at www.assaabloydss.com/extranet by clicking the FLASHship™ icon
Note: FLASHship™ reserves the right to limit quantities.

Copyright © 2015-2016, Pemko Manufacturing Co., an ASSA ABLOY Group company. All rights reserved.
Reproduction in whole or in part without the express written permission of Pemko Manufacturing Co. is prohibited.



ROCKWOOD®

Fax 877-888-2772, email flashship@assaabloyusa.com or use
Online Order Entry at www.assaabloydss.com/extranet by clicking the FLASHship™ icon
Note: FLASHship™ reserves the right to limit quantities.

Copyright © 2012, 2015-2016, Rockwood Manufacturing Company, an ASSA ABLOY Group company. All rights reserved.
Reproduction in whole or in part without the express written permission of Rockwood Manufacturing Company is prohibited.

Fax FLASHship orders to 877-888-2772 or email to flashship@assaabloy.com

ASSA ABLOY

The global leader in
door opening solutions

Dallas Issue August 2016 43

ROCKWOOD®



94C Flush Pull



106 x 70C Pull Plate



70C Push Plate

Model #	Description	Finish	FLASHship™ #	Approx. Wt. Each (Lbs)
Push Plates				
70B	3-1/2" x 15"	US10B	685885	1
70B	3-1/2" x 15"	US28	685886	1
70B	3-1/2" x 15"	US32D	685887	1
70C	4" x 16"	US3	685891	1
70C	4" x 16"	US10B	685888	1
70C	4" x 16"	US26D	685889	1
70C	4" x 16"	US28	685890	1
70C	4" x 16"	US32D	685892	1
70E	6" x 16"	US32D	685893	2
70F	8" x 16"	US32D	685894	2
Flush Pulls				
94	3-1/2" x 5"	US32D	685906	0.6
94BTB	Set BTB	US32D	685907	0.1
94C	3-1/2" x 5"	US32D	685908	0.6
95A	2-3/16" x 3-1/4"	US26D	685909	0.6
95B	2-11/16" x 4-3/4"	US26	685910	0.6
95B	2-11/16" x 4-3/4"	US26D	685911	0.6
Pull Plates				
102 x 70B	5/8" D x 5-1/2" CTC	US32D	685743	2
102 x 70C	5/8" D x 5-1/2" CTC	US32D	685744	2
105 x 70B	3/4" D x 5-1/2" CTC	US32D	685745	2
105 x 70C	3/4" D x 5-1/2" CTC	US32D	685746	2
106 x 70B	3/4" D x 6" CTC	US32D	685748	2
106 x 70C	3/4" D x 6" CTC	US10B	685749	2
106 x 70C	3/4" D x 6" CTC	US32D	685750	2
107 x 70B	3/4" D x 8" CTC	US32D	685752	2
107 x 70C	3/4" D x 8" CTC	US10B	685753	2
107 x 70C	3/4" D x 8" CTC	US32D	685754	2
110 x 70C	1" D x 8" CTC	US32D	685763	3.5
111 x 70C	1" D x 10" CTC	US32D	685765	4
122 x 70C	3/8" x 1-1/4" x 6" CTC	US10B	685766	2
122 x 70C	3/8" x 1-1/4" x 6" CTC	US32D	685767	2
125 x 70C	1" HR x 6" CTC	US32D	685768	2
126 x 70C	1" HR x 8" CTC	US32D	685769	2

ASSA ABLOY

The global leader in
door opening solutions

Fax 877-888-2772, email flashship@assaabloyusa.com or use
Online Order Entry at www.assaabloydss.com/extranet by clicking the FLASHship™ icon

Note: FLASHship™ reserves the right to limit quantities.

Copyright © 2012, 2015-2016, Rockwood Manufacturing Company, an ASSA ABLOY Group company. All rights reserved.
Reproduction in whole or in part without the express written permission of Rockwood Manufacturing Company is prohibited.



132 x 70C Pull Plate



Offset Push Pull Set



320 Lock Protector

Model #	Description	Finish	FLASHship™ #	Approx. Wt. Each (Lbs)
Pull Plates (Cont.)				
132 x 70B	Cast x 5-1/2" CTC	US32D	685771	2
132 x 70C	Cast x 5-1/2" CTC	US32D	685772	2
Straight Door Pulls				
106	3/4" x 6"	US32D	685747	1.2
107	3/4" x 8"	US32D	685751	1.4
110	1" x 8"	US32D	685762	3
111	1" x 10"	US32D	685764	3
Offset Door Pulls				
BF157	1" x 10"	US28	685912	2
BF157	1" x 10"	US32D	685915	2
BF157	1" x 10"	314	685913	2
BF157BTB16	1" x 10"	US28	685919	3
BF158	1" x 12"	US32D	685922	4
Offset Push Pull Sets				
BF15747CT3	10" Offset Push Pull Set	US28	685916	4.8
BF15747CT3	10" Offset Push Pull Set	US32D	685918	4.8
BF15747CT3	10" Offset Push Pull Set	315	685917	4.8
Latch Protectors				
320	Cylindrical or Mortise	US32D	685783	1.5
320CL	Cylindrical	US32D	685784	1.5
321	Mortise	US32D	685785	1.5

Fax 877-888-2772, email flashship@assaabloyusa.com or use
 Online Order Entry at www.assaabloydss.com/extranet by clicking the FLASHship™ icon
 Note: FLASHship™ reserves the right to limit quantities.

Copyright © 2012, 2015-2016, Rockwood Manufacturing Company, an ASSA ABLOY Group company. All rights reserved.
 Reproduction in whole or in part without the express written permission of Rockwood Manufacturing Company is prohibited.

Fax FLASHship orders to 877-888-2772 or email to flashship@assaabloy.com

ASSA ABLOY

The global leader in
door opening solutions

Dallas Issue August 2016 45

ROCKWOOD®



409 Concave Door Stop



430 Convex Door Stop



441H Dome Stop



446 Door Stop

Model #	Description	Finish	FLASHship™ #	Approx. Wt. Each (Lbs)
Door Stops				
400	Wall; Cast Convex	US26D	685787	0.3
403	Wall; Cast Concave	US10B	685788	0.3
403	Wall; Cast Concave	US26D	685789	0.3
406	Wall; Wrought Convex	US10B	685790	0.2
406	Wall; Wrought Convex	US26D	685791	0.2
406	Wall; Wrought Convex	US32D	685792	0.2
409	Wall; Wrought Concave	US3	685797	0.2
409	Wall; Wrought Concave	US10	685793	0.2
409	Wall; Wrought Concave	US10B	685794	0.2
409	Wall; Wrought Concave	US26	685795	0.2
409	Wall; Wrought Concave	US26D	685796	0.2
409	Wall; Wrought Concave	US32D	685798	0.2
415	Wall; Cast; Concave	US26D	685799	0.3
430	Wall; Convex	US26D	685800	0.1
440	Low Dome Stop	US10B	685801	0.2
440	Low Dome Stop	US26D	685802	0.2
441	Low Dome Stop	US10B	685803	0.2
441	Low Dome Stop	US26D	685804	0.2
441CU	Dome Stop w/Riser	US26D	685805	0.3
441H	Cast Universal Dome Stop	US26D	685806	0.2
442	High Dome Stop	US10B	685807	0.2
442	High Dome Stop	US26D	685808	0.2
443	High Dome Stop	US26D	685809	0.2
445	Heavy Duty Low Dome Stop	US26D	685810	0.3
446	Round Stop	US10B	685811	0.4
446	Round Stop	US26	685812	0.4
446	Round Stop	US26D	685813	0.4
455	Curved Roller Stop	US26D	685814	0.5
456	Straight Roller Stop	US26D	685815	0.5
456L	Straight Roller Stop	US26D	685816	0.5
459	Spring Loaded Plunger	US26D	685817	1.3

ASSA ABLOY

The global leader in
door opening solutions

Fax 877-888-2772, email flashship@assaabloyusa.com or use
Online Order Entry at www.assaabloydss.com/extranet by clicking the FLASHship™ icon

Note: FLASHship™ reserves the right to limit quantities.

Copyright © 2012, 2015-2016, Rockwood Manufacturing Company, an ASSA ABLOY Group company. All rights reserved.
Reproduction in whole or in part without the express written permission of Rockwood Manufacturing Company is prohibited.



470 Door Stop



476 Door Stop

Model #	Description	Finish	FLASHship™ #	Approx. Wt. Each (Lbs)
Door Stops (Cont.)				
460	Kick Down Stop	ALM	685818	0.1
461	Kick Down Stop	US10B	685819	0.1
461	Kick Down Stop	US26D	685820	0.1
461L	Kick Down Stop	US10B	685821	0.1
461L	Kick Down Stop	US26D	685822	0.1
462	Heavy Duty Stop	US2C	685823	0.6
463	Heavy Duty Stop	US32D	685824	0.6
465	Heavy Duty Stop	US26D	685826	0.6
466	Heavy Duty Stop	N/A	685827	0.6
467	Heavy Duty Stop	N/A	685828	0.6
470	Floor Stop	US26D	685829	0.7
471	Floor Stop	US26D	685830	0.7
472	Floor Stop w/ Keeper	US26D	685831	0.7
473	Floor Stop w/ Keeper	US26D	685832	0.7
474	Door Stop	US26D	685833	0.7
476	Door Stop w/ Keeper	US26D	685834	0.7
481	Door Stop	US26D	685836	0.6
481H	Door Stop	US26D	685837	0.6
482	Door Stop	US26D	685838	0.6
483	Door Stop	US26D	685839	0.6
485	Door Stop w/ Keeper	US26D	685840	0.6
486	Angle Stop	US2C	685841	0.4
487	Heavy Duty Stop	US26D	685842	0.8
491	Automatic Holder w/ Stop	US26D	685843	0.8
494	Automatic Holder w/ Stop	US26D	685844	0.8
518	Brass Wall Stop	US26D	685847	0.2
519	Brass Wall Stop	US26D	685848	0.2
526	Spring Base Stop	NP	685850	0.2
528	Hinge Pin Stop	NP	685851	0.2

Fax 877-888-2772, email flashship@assaabloyusa.com or use
 Online Order Entry at www.assaabloydss.com/extranet by clicking the FLASHship™ icon
 Note: FLASHship™ reserves the right to limit quantities.

Copyright © 2012, 2015-2016, Rockwood Manufacturing Company, an ASSA ABLOY Group company. All rights reserved.
 Reproduction in whole or in part without the express written permission of Rockwood Manufacturing Company is prohibited.

ASSA ABLOY

The global leader in
door opening solutions



555 Flush Bolt



570 Dust Strike



580 Surface Bolt

Model #	Description	Finish	FLASHship™ #	Approx. Wt. Each (Lbs)
Lever Extension Flush Bolts				
550	Flush Bolt	US26D	685852	0.8
555	Flush Bolt	US10B	685853	0.8
555	Flush Bolt	US26	685854	0.8
555	Flush Bolt	US26D	685855	0.8
555	Flush Bolt Extension Rod, 24"	-	686081	1
557	Flush Bolt	US26D	685856	0.8
Dust Proof Strike				
570	Strike	US10B	685857	0.4
570	Strike	US26D	685858	0.4
Surface Bolts				
580-8	8" Bolt Length	US26D	685859	1.1
630-4	4" Bolt Length	US26D	685883	0.8
Roller Latches				
590	w/Cast Strike	US26D	685860	0.6
591	w/ASA Strike	US26D	685861	0.6
592	w/#161 Strike	US26D	685862	0.6
593	w/Angle Stop	US26D	685863	0.6
594	w/#161 Strike	US26D	685864	0.6

ASSA ABLOY

The global leader in
door opening solutions

Fax 877-888-2772, email flashship@assaabloyusa.com or use
Online Order Entry at www.assaabloydss.com/extranet by clicking the FLASHship™ icon

Note: FLASHship™ reserves the right to limit quantities.

Copyright © 2012, 2015-2016, Rockwood Manufacturing Company, an ASSA ABLOY Group company. All rights reserved.
Reproduction in whole or in part without the express written permission of Rockwood Manufacturing Company is prohibited.



603 Door Guard



614V Door Kocker/Viewer



622 Door Viewer



802 Coat Hook

Model #	Description	Finish	FLASHship™ #	Approx. Wt. Each (Lbs)
Door Guards				
602	Secret Gate Latch	US26D	685865	1
603	Cast Aluminum	DCRM	685867	0.4
604	Cast Brass Protection Plate	US26D	685870	0.4
605	Brass	US26D	685871	0.3
606	Clear Rubber Wall Guard (Qty of 55 per sheet)	N/A	685872	0.3
Door Silencers				
608	Gray Rubber (Qty of 100 per package)	N/A	685873	0.01
608CA	Clear Rubber (Qty of 300 per sheet)	N/A	685874	0.01
609	Gray Rubber (Qty of 100 per package)	N/A	685875	0.01
Door Knockers/Viewers				
614V	Knocker/w 190° Viewer	US26D	685876	0.4
620	160° Viewer	CRM	685877	0.1
622	190° Viewer	ANT	685878	0.1
622	190° Viewer	BRS	685879	0.1
622	190° Viewer	CRM	685880	0.1
622	190° Viewer	DCRM	685881	0.1
622	190° Viewer	STNN	685882	0.1
Coat Hooks				
796	Small Hook	US26D	685895	0.3
802	Medium Hook	US26D	685896	0.4
806	Medium Hook	US26D	685897	0.4
Misc. Pulls/Catches				
853	Wire Pull	US26D	685899	0.5
860	Flush Cup Pull	US32D	685900	0.9
872	Cast Flush Pull	US26D	685901	0.9
900	HD Magnetic Catch	ALM	685904	0.4
901	XHD Magnetic Catch	ALM	685905	0.4
Coordinators				
2601AB	Mounting Bracket	Black Prime Coat	685776	1
2601C	Mounting Bracket	Black Prime Coat	685777	1
2660	Coordinator	Black Prime Coat	685741	4.5
2672	Coordinator	Black Prime Coat	685778	4.5
2696	Coordinator	Black Prime Coat	685742	4.5
1700	Universal	Black Prime Coat	685775	3.5
Automatic Flush Bolts				
2842	Automatic	US26D	685779	2.4
2845	Self Latching	US26D	685780	2.4
2942	Automatic	US26D	685781	2.4
2945	Self Latching	US26D	685782	2.4

Fax 877-888-2772, email flashship@assaabloyusa.com or use
 Online Order Entry at www.assaabloydss.com/extranet by clicking the FLASHship™ icon
 Note: FLASHship™ reserves the right to limit quantities.

Copyright © 2012, 2015-2016, Rockwood Manufacturing Company, an ASSA ABLOY Group company. All rights reserved.
 Reproduction in whole or in part without the express written permission of Rockwood Manufacturing Company is prohibited.

ASSA ABLOY

The global leader in
door opening solutions

ROCKWOOD®



2600 Coordinator



1700 Universal Coordinator



2842 Automatic Flush Bolt



R111LPB Trim Protector Bar



K1050 Kick Plate

Model #	Description	Finish	FLASHship™ #	Approx. Wt. Each (Lbs)
Filler Plates				
DFF4	Frame Hinge	Prime Coat	685924	0.02
LF161	Door Edge	Prime Coat	685927	0.02
DF86	Door Edge	Prime Coat	685923	0.02
SFASA	Strike	Prime Coat	685929	0.02
HS42	Hinge Shim	-	685925	0.1
HS44	Hinge Shim	-	685926	0.1
Trim Protection Bars				
R111LPB	Lever Handle	US32D	685928	4.5
Protection Plates				
K1050	4 x 35	US32D	685845	2
K1050	6 x 34	US32D	685884	3
K1050	8 x 34	US10B	685930	4.5
K1050	8 x 34	US32D	685902	4
K1050	8 x 35	US32D	685903	4.5
K1050	10 x 34	US10B	685932	5.5
K1050	10 x 34	US28	685931	3
K1050	10 x 34	US32D	685755	5
K1050	10 x 34 (4BE)	US32D	685757	5
K1050	10 x 34-1/2	US32D	685758	5
K1050	10 x 35	US32D	685759	5.5
K1050	10 x 40	US32D	685760	6
K1050	10 x 46	US32D	685761	5
K1050	12 x 34	US32D	685770	6
K1050	16 x 34	US32D	685774	8
K1050	34 x 34	US32D	685786	17

ASSA ABLOY

The global leader in
door opening solutions

Fax 877-888-2772, email flashship@assaabloyusa.com or use
Online Order Entry at www.assaabloydss.com/extranet by clicking the FLASHship™ icon

Note: FLASHship™ reserves the right to limit quantities.

Copyright © 2012, 2015-2016, Rockwood Manufacturing Company, an ASSA ABLOY Group company. All rights reserved.
Reproduction in whole or in part without the express written permission of Rockwood Manufacturing Company is prohibited.

RIXSON®



Fax 877-888-2772, email flashship@assaabloyusa.com or use
Online Order Entry at www.assaabloydss.com/extranet by clicking the FLASHship™ icon
Note: FLASHship™ reserves the right to limit quantities.

Copyright © 2015-2016, Yale Security Inc., an ASSA ABLOY Group company. All rights reserved.
Reproduction in whole or in part without the express written permission of Yale Security Inc. is prohibited

Fax FLASHship orders to 877-888-2772 or email to flashship@assaabloy.com

ASSA ABLOY

The global leader in
door opening solutions

Dallas Issue August 2016 51

RIXSON®


147 Offset Pivot



195 Offset Pivot



370 Center Hung Pivot


EM19 Power Transfer
Intermediate Pivot

Model #	Description	Hand	Finish	FLASHship™ #	Approx. Wt. Each (Lbs)
3/4" Offset Pivot Sets (Includes Top Pivot)					
117	Regular (250#) Interior	RH	626	685422	3
117	Regular (250#) Interior	LH	626	685423	3
147	Regular (500#) Interior/Exterior	RH	613	685428	2
147	Regular (500#) Interior/Exterior	LH	613	685429	2
147	Regular (500#) Interior/Exterior	RH	626	685426	2
147	Regular (500#) Interior/Exterior	LH	626	685427	2
L147	Heavy Weight (700#) Lead 1-3/4" Door	RH	626	685430	5
L147	Heavy Weight (700#) Lead 1-3/4" Door	LH	626	685431	5
195	Regular (400#) Frame Attached	RH	613	685436	3
195	Regular (400#) Frame Attached	LH	613	685437	3
195	Regular (400#) Frame Attached	RH	626	685434	3
195	Regular (400#) Frame Attached	LH	626	685435	3
Center Hung Pivot Sets (Includes Top Pivot)					
128-3/4	250#	-	613	685441	2
128-3/4	250#	-	626	685440	2
127-3/4	250# Frame Attached	-	613	685439	2
127-3/4	250# Frame Attached	-	626	685438	2
370	400#	-	613	685443	3
370	400#	-	626	685442	3
Intermediate Pivots					
M19	Regular	RH	613	685446	2
M19	Regular	LH	613	685447	2
M19	Regular	RH	626	685444	2
M19	Regular	LH	626	685445	2
EM19	Low Voltage Transfer Pivot, ElectroLynx® 8-Wire	RH	626	685448	2
EM19	Low Voltage Transfer Pivot, ElectroLynx® 8-Wire	LH	626	685449	2

ASSA ABLOY

The global leader in
door opening solutions

Fax 877-888-2772, email flashship@assaabloyusa.com or use
Online Order Entry at www.assaabloydss.com/extranet by clicking the FLASHship™ icon

Note: FLASHship™ reserves the right to limit quantities.

Copyright © 2015-2016, Yale Security Inc., an ASSA ABLOY Group company. All rights reserved.
Reproduction in whole or in part without the express written permission of Yale Security Inc. is prohibited

RIXSON®



Checkmate® Stops & Holders

994 Electromagnetic
Holder/Release

Model #	Description	Finish	FLASHship™ #	Approx. Wt. Each (Lbs)
Checkmate® Stops and Holders				
Concealed				
1-326	Heavy Duty Holder, Size 3	613	685457	5
1-326	Heavy Duty Holder, Size 3	630	685455	5
1-336	Heavy Duty Stop, Size 3	613	685456	5
1-336	Heavy Duty Stop, Size 3	630	685454	5
6-336	Low Profile Stop, Size 3	630	685462	5
2-346	Standard Duty Adjustable Combo, Size 3	613	685465	2
2-346	Standard Duty Adjustable Combo, Size 3	630	685464	2
Surface				
9-326	Heavy Duty Holder, Size 3	613	685461	4
9-326	Heavy Duty Holder, Size 3	630	685459	4
9-336	Heavy Duty Stop, Size 3	613	685460	4
9-336	Heavy Duty Stop, Size 3	630	685458	4
10-346	Standard Duty Adjustable Combo, Size 3	613	685467	2
10-346	Standard Duty Adjustable Combo, Size 3	630	685466	2
Electromagnetic Door Holder/Releases				
Triple Voltage Door Holders (12VDC, 24VAC/DC and 120VAC)				
996	Surface Wired	689	685472	2
996	Surface Wired	690	685473	2
994	Adjustable Short Armature Concealed Wiring	689	685470	2
994	Adjustable Short Armature Concealed Wiring	690	685471	2
980	Floor Mounted	689	685468	3
980	Floor Mounted	690	685469	3
997	Wall Mounted	689	686077	2
997	Wall Mounted	690	686078	2
998	Wall Mounted	689	686079	3
998	Wall Mounted	690	686080	3
Armature Extensions				
900	Base Unit	689	685474	0.1
900	Base Unit	690	685475	0.1
900-50	1/2" Armature Extension Filler*	689	685476	0.1
900-50	1/2" Armature Extension Filler*	690	685477	0.1
900-75	3/4" Armature Extension Filler*	689	685478	0.1
900-75	3/4" Armature Extension Filler*	690	685479	0.1
900-100	1" Armature Extension Filler*	689	685480	0.1
900-100	1" Armature Extension Filler*	690	685481	0.1

*Extension spacers and bend must be used with 900 base unit armature extension

Fax 877-888-2772, email flashship@assaabloyusa.com or use
Online Order Entry at www.assaabloydss.com/extranet by clicking the FLASHship™ icon
Note: FLASHship™ reserves the right to limit quantities.

Copyright © 2015-2016, Yale Security Inc., an ASSA ABLOY Group company. All rights reserved.
Reproduction in whole or in part without the express written permission of Yale Security Inc. is prohibited

ASSA ABLOY

The global leader in
door opening solutions

Order Form

Fax To: 877.888.2772 • E-mail To: FLASHship@assaabloy.com
Attention: Customer Service

Account # _____ P.O. # _____ P.O. Date _____
 Company Name _____
 Contact Name _____
 Contact Phone _____ Contact Fax _____ Contact E-mail _____

Ship To _____
 Address _____
 City _____ State _____ Zip _____
 Attention _____

Ship Via: ☐ Standard: Ground
☐ Next Day: Freight Pre-Paid and Added to Customer Invoice
☐ 2nd Day: Freight Pre-Paid and Added to Customer Invoice

Instructions:

1. Orders should be submitted on this form to qualify for FLASHship™.
2. Factory lead times apply if ANY items on the order are NOT listed in the current published *FLASHship* offering.
3. Orders can not be changed or cancelled.

[illegible]

Order Form

Fax To: 877.888.2772 • E-mail To: FLASHship@assaabloy.com
Attention: Customer Service

Page _____ of _____

Account #: _____ P.O. #: _____

Company Name: _____

Instructions:

1. Orders should be submitted on this form to qualify for FLASHship™.
2. Factory lead times apply if ANY items on the order are NOT listed in the current published *FLASHship* offering.
3. Orders cannot be changed or cancelled.

[illegible]

ASSA ABLOY is the global leader in door opening solutions, dedicated to satisfying end-user needs for security, safety and convenience

ASSA ABLOY

Industry-Leading Brands

To bring you the best and most complete security and life-safety solutions, ASSA ABLOY provides the products of brands known for quality, service and innovation. This group of hardware manufacturers works together to create openings that are strong, durable and meet today's needs for advanced safety and security solutions.

MARKAR | www.markar.com
Complete range of continuous hinges

McKINNEY | www.mckinneyhinge.com
Standard hinges, electric hinges, decorative hinges, specialty hinges, and custom hinges

PEMKO | www.pemko.com
Thresholds, gasketing products, continuous geared hinges, lites, louvers and accessories

RIXSON | www.rixson.com
Concealed closers, pivots and mechanical/electromechanical door holders

ROCKWOOD | www.rockwoodmfg.com
Architectural door pulls, door stops and holders, bolts and latches, specialty door trim

YALE | www.yalelocks.com
Mortise, cylindrical & auxiliary locks, exit devices, door closers, electromechanical products, and key systems

ASSA ABLOY Door Security Solutions
110 Sargent Drive
New Haven, CT 06511
800.DSS.EZ4U (377.3948) | 203.624.5225
www.assaabloydss.com

**We are where you are.
Connect with us online:**



www.facebook.com/assaabloydss



www.twitter.com/assaabloydssus

Copyright © 2015-2016, ASSA ABLOY Door Security Solutions, an ASSA ABLOY Group company. All rights reserved. Reproduction in whole or in part without the express written permission of ASSA ABLOY Door Security Solutions is prohibited.

2500-2697 08/16N