

# Affinity® Smart Card Lock

Multi-Family/Apartment/Condominium



An ASSA ABLOY Group brand

**ASSA ABLOY**

# Affinity®

## Smart Card Lock

Multi-Family/Apartment/Condominium

Yale® Affinity® (RFID) Lock combines the latest Radio Frequency Identification technology with a flexible electronic locking system, perfect for Multi-Family, Apartment or Condominium Housing. Designed with ease of use and resident security in mind, Yale brings contactless identification electronic locking to the multi-family housing market.



## Benefits

**Higher Security for Residents** – Yale Affinity eliminates issues commonly associated with mechanical masterkeyed locks. Smart card technology enables easy reprogramming to erase or add users in seconds; right at the lock.

**Worry-free Technology** – The latest in Radio Frequency Identification (RFID) technology provides an improved security platform for facility administration as well as residents. Unique ID protection technology prevents cloning of cards eliminating the possibility of unauthorized duplication of credentials.

**Powerful Audit Capabilities** – Affinity electronic locks offer a time stamped audit trail. Management can quickly and easily identify which cards have been used for access or to attempt access at the door. Write-back capability from the locks to an authorized card provides quick and easy retrieval of audit trails. Battery status and tamper attempt alarms provide both residents and property managers with the peace of mind that comes from having the highest level of security on their doors.

**Convenient Security for Amenities & Special Use Areas** – Prevents unauthorized use of exclusive amenities such as fitness, pool & spa areas, meeting rooms and storage facilities. It is also possible to allow temporary access to areas such as banquet rooms that may be used for special functions.

**Credential Options for Ease of Use** – Contactless keycards offer unmatched ease of use for individuals of all ages and abilities. Entry is intuitive with the simple wave of a card. There is no need to insert Affinity keycards into the lock, allowing a variety of credential types to be used, including keyfobs, wristbands, etc.

**Robust Construction** – Affinity locks combine a strong and reliable mechanical platform along with sealed electronic components to provide better performance even on exterior applications.

**Access to Current and Future Technology** – Affinity offers multiple technology standards in one electronic lock and provides access today to next generation technologies.

- 13.56 MHz RFID smart card technology
- Compatible with the following contactless smart card standards:
  - ISO 14443 A (MIFARE)
  - ISO 14443 B
  - ISO 15693
- NFC Compatibility:
  - Future-proof your investment. This smart card lock can recognize your NFC (Near Field Communication) capable phone.

## Features

### Electronic Elements

- Stand alone electronic lock with smart RFID technology
- Future re-programmable FLASH RAM lock memory
- 600 event audit trail
- VISION by VingCard® System Software
- FCC approved






### Mechanical Components

- UL listed for use on fire doors
- ADA compliant
- High security mortise lockcase
- Solid brass handle with self lubricating long life bearings
- 3-point steel antifriction latch construction

- Full 1-inch throw case hardened deadbolt
- 3AA batteries – provide up to 3 years normal life time
- Simultaneous Retraction – the deadbolt and latch are automatically retracted by inside handle for easy egress in emergency situations
- Optional Passage Mode – allows Affinity to be put in passage for free access without the use of the keycard when desired
- Optional Key Override – full range of Yale® conventional, protected, and security cylinders available

# RFID (Contactless) Carriers

Yale offers a wide range of RFID carriers that are especially designed for different lifestyles.

				
<b>Standard keycard</b>	<b>Long lasting keycard</b>	<b>Keyfobs:</b> Smart card fobs may be worn on a keychain, and customized at your request.	<b>Wristbands:</b> The ideal RFID carrier for exclusive access to facility amenities.	<b>NFC cell phone:</b> Compatible with NFC technology cell phones.

**All RFID carriers may be mixed within one property, providing flexible solutions for building management.**

## Levers



Straight Handle VMO



Wing Handle VAR



Gothic Handle VGH



Handle with Return VAU

## Finishes



Satin Chromium Plated    Bright Chromium Plated



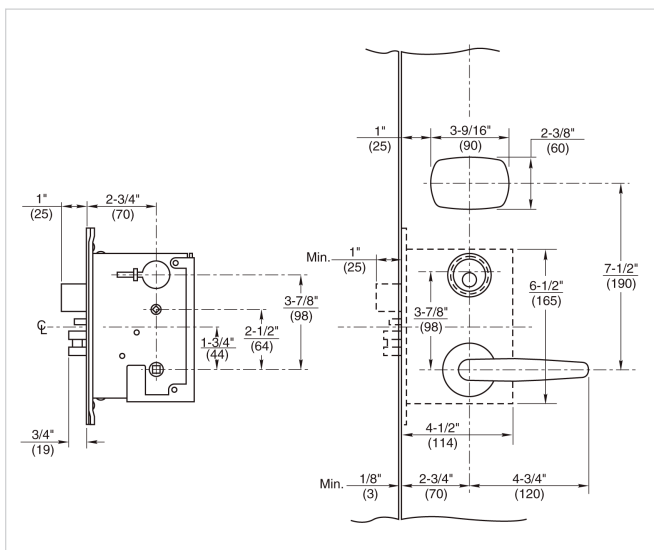
Satin Brass    Bright Brass

## Battery Cover Options

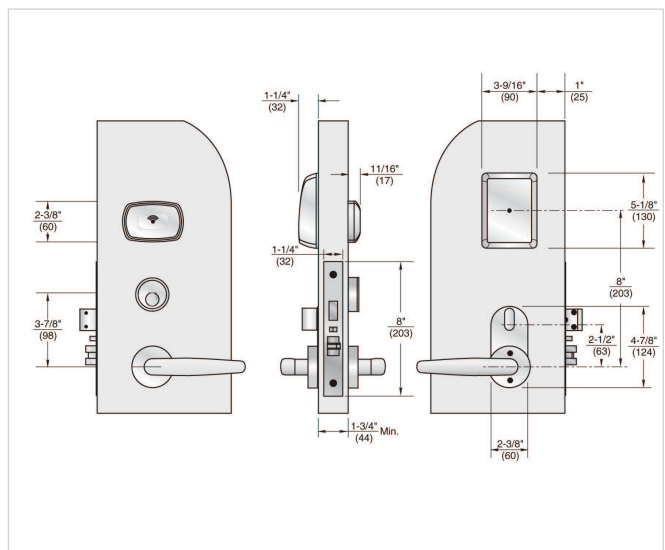


Optional metal battery cover matching the handle finish is available.

## Lock Dimensions



## Installed Dimensions



# VISION by VingCard®

*VISION by VingCard* is a full-featured, functionally rich access control system with the power, flexibility and ease of use to meet the operating needs of any multi-family property both now and in the future.

*VISION by VingCard* is the result of more than 25 years of experience by the leading provider of hotel security products. And now it has been adapted to meet the needs of the multi-family housing market.

With an intuitive graphical interface and menu-driven software, *VISION by VingCard* software is easy to install and to use. By combining "who", "where" and "when" definitions into precisely defined user-groups, the *VISION by VingCard* system provides flexible access management control that is far more powerful than many other systems currently available on the market. In other words, you can control exactly who has access to every door on the property, and when.

The dedicated portable Windows® pocket PC unit allows you to audit the last 100 locking events right at the apartment/condo door.

## Features

### *VISION by VingCard* System Hardware

- Operates as stand-alone electronic key programming station, or link with as many terminals as your complex requires
- Optional modem for remote reporting and diagnostics
- PMS TCP/IP network interface option

### *VISION by VingCard* Software

- Menu-driven software for user-friendly operation
- Modular, upgradeable software with an array of powerful features
- Industry standard Windows® 98/2000/NT/XP/VISTA operating system
- Easily interfaces with existing Property Management Systems
- "Plug and play" ethernet for simple, fast, reliable networks
- Powerful and stable SQL Database
- Up to 256 user groups
- Up to 16,000 system users
- Up to 99 card programming stations

Sold through  
**ASSA ABLOY  
AUTHORIZED  
CHANNEL  
PARTNER**



Affinity® Smart Card Locks are part of the ASSA ABLOY Authorized Channel Partner (ACP) program. Contact your ASSA ABLOY Door Security Solutions sales consultant for details.



### **Yale Locks & Hardware**

Address: 225 Episcopal Road, Berlin, CT 06037-4004 USA

Tel: 1-800-438-1951 • Fax: 1-800-338-0965

www.yalelocks.com

### **ASSA ABLOY Door Security Solutions - Canada**

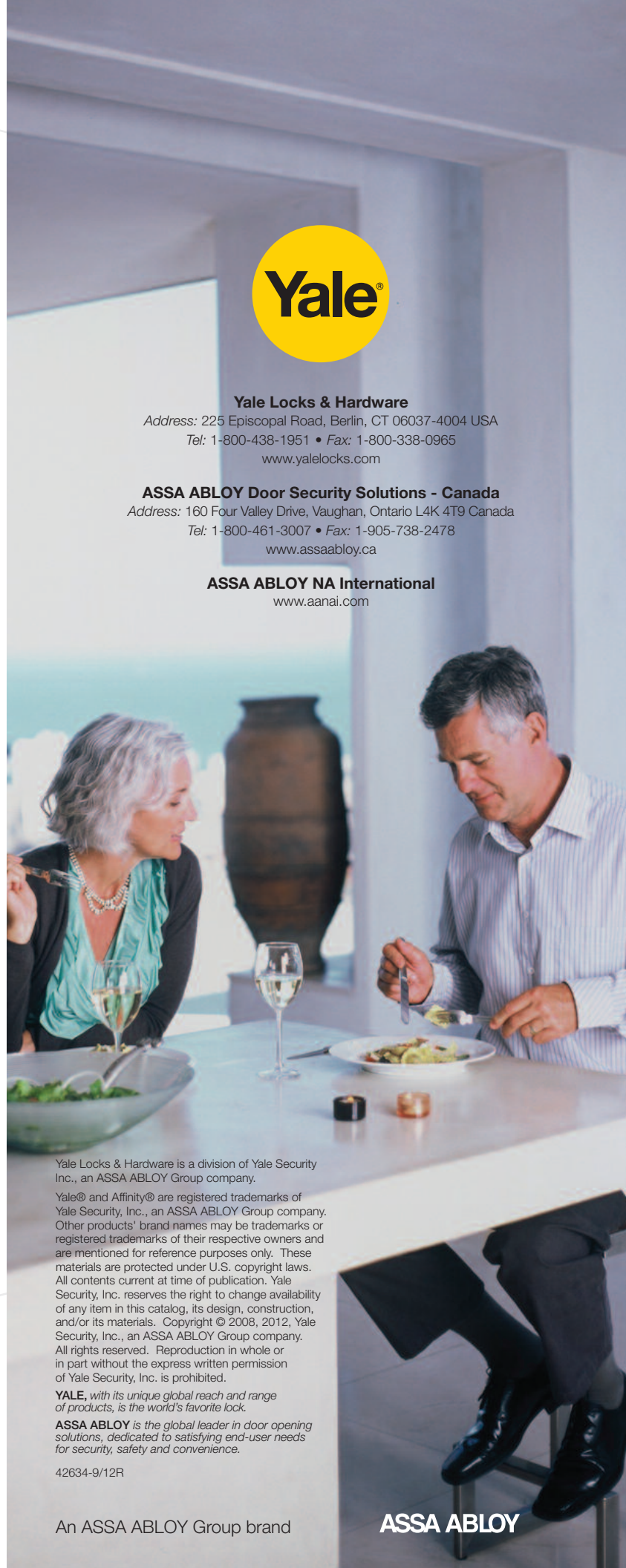
Address: 160 Four Valley Drive, Vaughan, Ontario L4K 4T9 Canada

Tel: 1-800-461-3007 • Fax: 1-905-738-2478

www.assaabloy.ca

### **ASSA ABLOY NA International**

www.aanai.com



Yale Locks & Hardware is a division of Yale Security Inc., an ASSA ABLOY Group company.

Yale® and Affinity® are registered trademarks of Yale Security, Inc., an ASSA ABLOY Group company. Other products' brand names may be trademarks or registered trademarks of their respective owners and are mentioned for reference purposes only. These materials are protected under U.S. copyright laws. All contents current at time of publication. Yale Security, Inc. reserves the right to change availability of any item in this catalog, its design, construction, and/or its materials. Copyright © 2008, 2012, Yale Security, Inc., an ASSA ABLOY Group company. All rights reserved. Reproduction in whole or in part without the express written permission of Yale Security, Inc. is prohibited.

**YALE**, with its unique global reach and range of products, is the world's favorite lock.

**ASSA ABLOY** is the global leader in door opening solutions, dedicated to satisfying end-user needs for security, safety and convenience.

42634-9/12R

An ASSA ABLOY Group brand

**ASSA ABLOY**