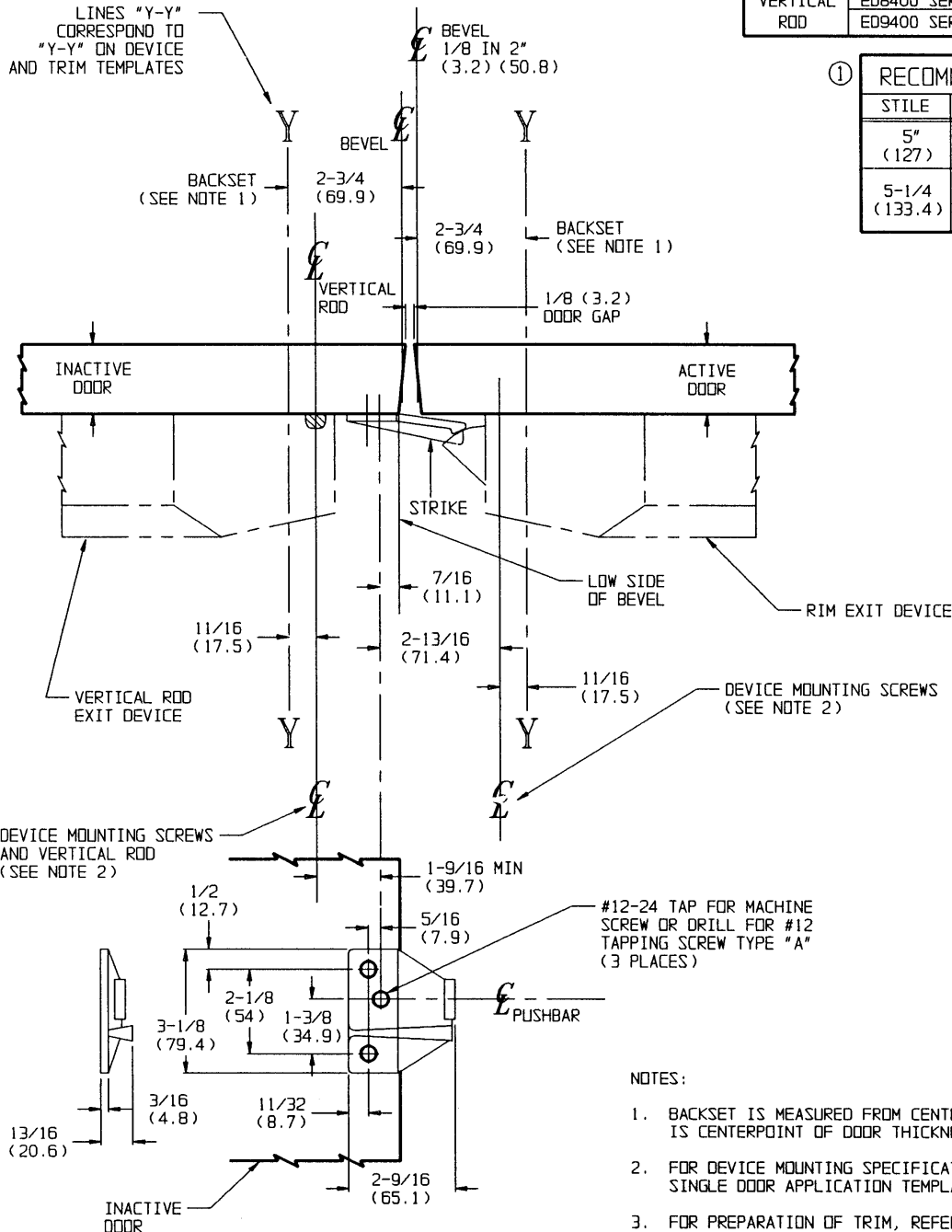


# DOUBLE DOOR APPLICATIONS ONLY

LINES "Y-Y"  
CORRESPOND TO  
"Y-Y" ON DEVICE  
AND TRIM TEMPLATES



DEVICE MOUNTING SCREWS  
AND VERTICAL ROD  
(SEE NOTE 2)

S02  
468F30 STRIKE DETAIL

## NOTES:

1. BACKSET IS MEASURED FROM CENTERLINE OF BEVEL WHICH IS CENTERPOINT OF DOOR THICKNESS.
2. FOR DEVICE MOUNTING SPECIFICATIONS, REFER TO APPROPRIATE SINGLE DOOR APPLICATION TEMPLATE.
3. FOR PREPARATION OF TRIM, REFER TO SEPARATE TEMPLATE.
4. DIMENSIONS GIVEN IN INCHES AND (MM).

①

## TEMPLATE CROSS REFERENCE (FOR SINGLE DOOR APPLICATIONS)

DEVICE	DESCRIPTION	TEMPLATE
RIM	ED8200 SERIES	T30436
	ED8200 SERIES x M61 & M62	T30491
	ED9200 SERIES	T30441
VERTICAL ROD	ED9200 SERIES x M61 & M62	T30490
	ED8400 SERIES	T30437
	ED9400 SERIES	T30431

①

## RECOMMENDED MINIMUM STILE

STILE	RIM BY VERTICAL ROD
5" (127)	ED8200 BY ED8400
5-1/4" (133.4)	ED8200 x M61 & M62 BY ED8400 ED9200 BY ED9400 ED9200 x M61 & M62 BY ED9400

## RESPONSIBILITY

Door and Frame Manufacturers are responsible for providing adequate construction or reinforcements for proper installation of hardware shown. All architectural builders hardware must be installed on properly reinforced doors and frames, regardless of the type, material, or method of construction.

ED8200 BY ED8400 SERIES  
ED9200 BY ED9400 SERIES  
BY S02 STRIKE

PUSHBAR RIM BY  
VERTICAL ROD EXIT DEVICES

**Corbin Russwin**  
www.corbinrusswin.com

DO NOT SCALE DRAWING

SUPERSEDES	T30496	OR.	BTH	DATE	04/06/93	TEMPLATE NUMBER	T30496-1
------------	--------	-----	-----	------	----------	-----------------	----------