

# MOUNTING INFORMATION

- For Fire Rated Exit Devices:  
Sex nuts or through bolts  
are required for wood core, wood  
and plastic covered composite doors,  
and any type of door without  
reinforcements.

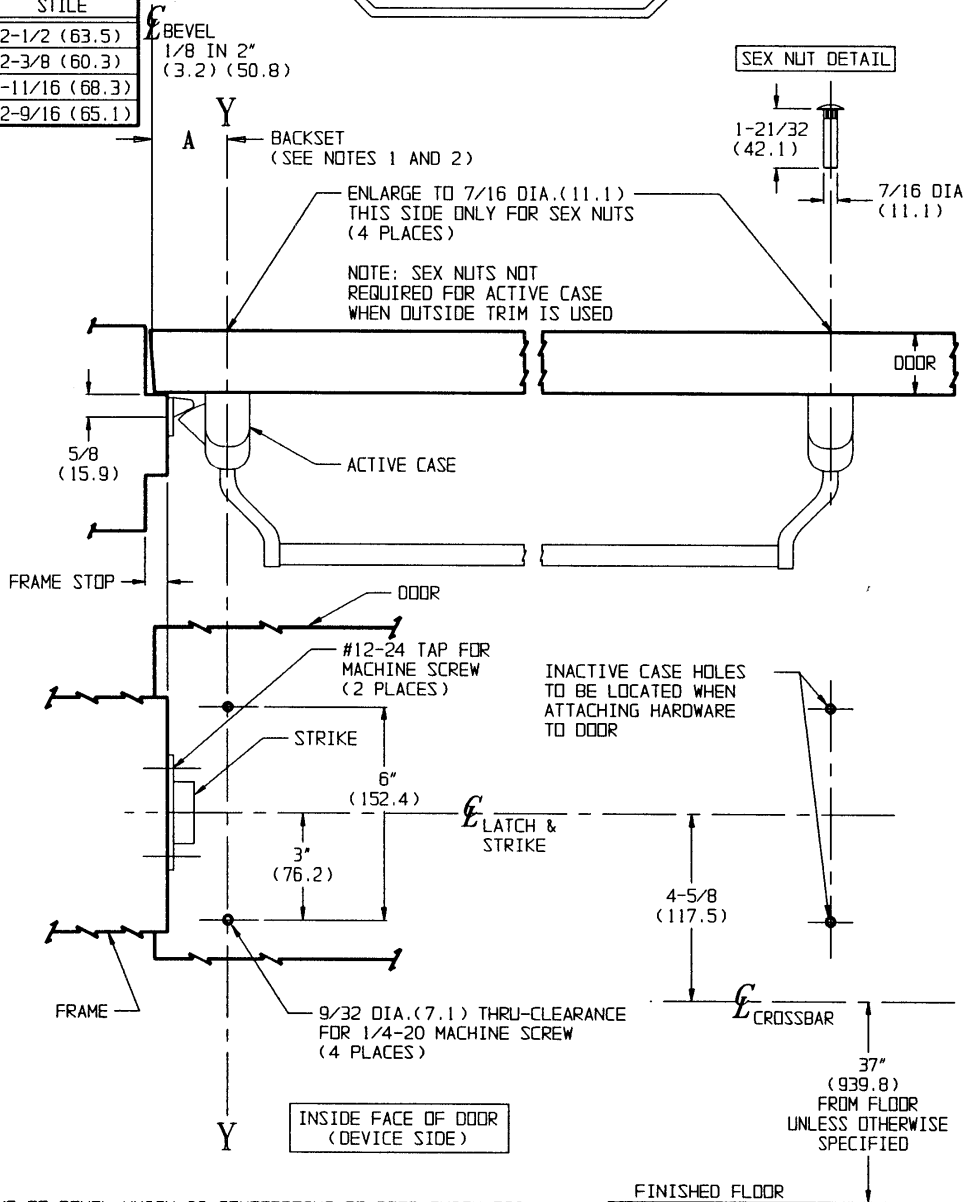
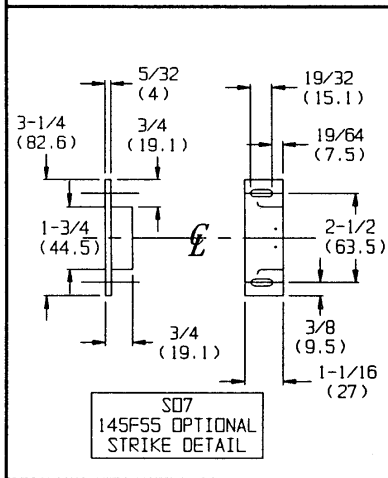
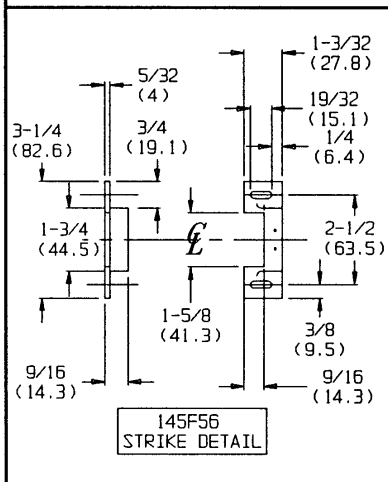
# SINGLE DOOR APPLICATIONS ONLY

# TEMPLATE CROSS REFERENCE

DESCRIPTION	TEMPLATE
50B, 510 MULLION	T30504
ED7200 SERIES x SD4	T30608
ED7200 SERIES x SD8	T30609

LHR SHOWN  
RHR OPPOSITE

STRIKE	FRAME STOP	BACKSET A	MINIMUM STILE
145F56	5/8 (15.9) 1/2 (12.7)	1-13/16 (46) 1-11/16 (42.9)	2-1/2 (63.5) 2-3/8 (60.3)
145F55 OPTIONAL	5/8 (15.9) 1/2 (12.7)	2" (50.8) 1-7/8 (47.6)	2-11/16 (68.3) 2-9/16 (65.1)



- NOTES:
- BACKSET IS MEASURED FROM CENTERLINE OF BEVEL WHICH IS CENTERPOINT OF DOOR THICKNESS.
  - [CAUTION:]** THIS TEMPLATE IS FOR SINGLE DOOR APPLICATIONS ONLY. REFER TO APPROPRIATE MULLION TEMPLATE FOR DOUBLE DOOR APPLICATIONS. NOTE THAT THE BACKSET DIMENSION FOR SINGLE DOORS DIFFERS FROM THE BACKSET FOR DOUBLE DOORS.
  - FOR PREPARATION OF TRIM, REFER TO SEPARATE TEMPLATE.
  - DIMENSIONS GIVEN IN INCHES AND (MM).

## RESPONSIBILITY

Door and Frame Manufacturers are responsible for providing adequate construction or reinforcements for proper installation of hardware shown. All architectural builders hardware must be installed on properly reinforced doors and frames, regardless of the type, material, or method of construction.

ED7200 SERIES

CROSSBAR NARROW STILE RIM DEVICE



DO NOT SCALE DRAWING			
SUPERSEDES	VT30364	DR.	BTH
DATE	04/08/93	TEMPLATE NUMBER	T30568