

**NOTES:**

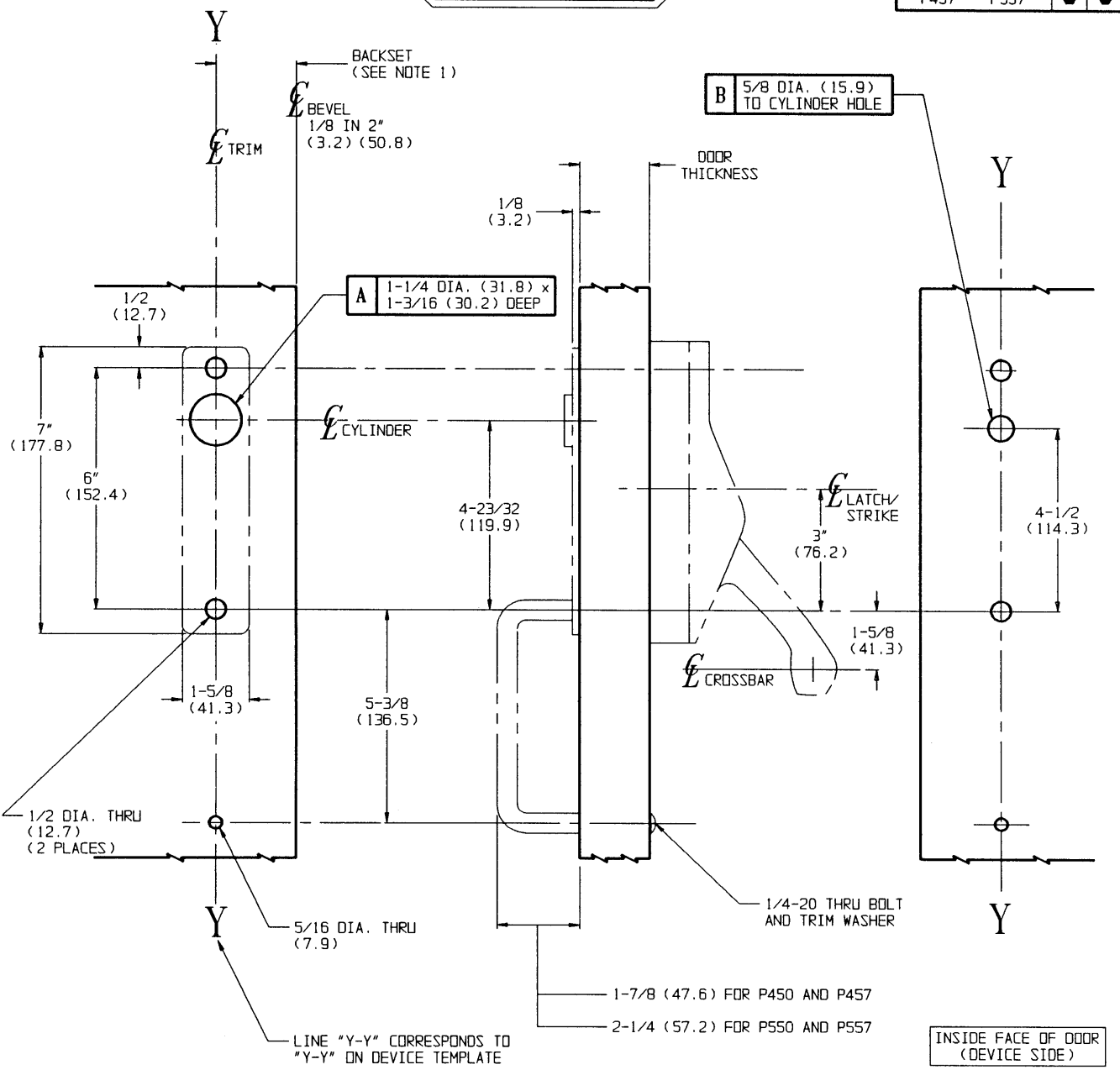
- BACKSET IS MEASURED FROM CENTERLINE OF BEVEL WHICH IS CENTERPOINT OF DOOR THICKNESS. REFER TO DEVICE TEMPLATE FOR BACKSET
- DIMENSIONS GIVEN IN INCHES AND (MM).
- REFER TO CHART FOR SPECIAL HOLES REQUIRED BY TRIM FUNCTION.

**TEMPLATE CROSS REFERENCE**

DESCRIPTION	TEMPLATE
ED7200 SERIES RIM DEVICE	T30568
ED7200 SERIES x S04	T30608

LHR SHOWN  
RHR OPPOSITE

TRIM		A	B
P450	P550		
P457	P557	●	●



OUTSIDE FACE OF DOOR  
(TRIM SIDE)

INSIDE FACE OF DOOR  
(DEVICE SIDE)

SUPERSEDES:  
W25375, W25376  
22849C, 22850C

**RESPONSIBILITY**  
Door and Frame Manufacturers are responsible for providing adequate construction or reinforcements for proper installation of hardware shown. All architectural builders hardware must be installed on properly reinforced doors and frames, regardless of the type, material, or method of construction.

P 450    P 457  
P 550    P 557

PULL BY ESCUTCHEON TRIM  
CROSSBAR NARROW STILE  
RIM DEVICE

**Corbin  
Russwin**  
www.corbinrusswin.com

DO NOT SCALE DRAWING

SUPERSEDES SEE ABOVE DR. BTH APP. *[Signature]*

DATE 03/24/93 TEMPLATE NUMBER T 30576