

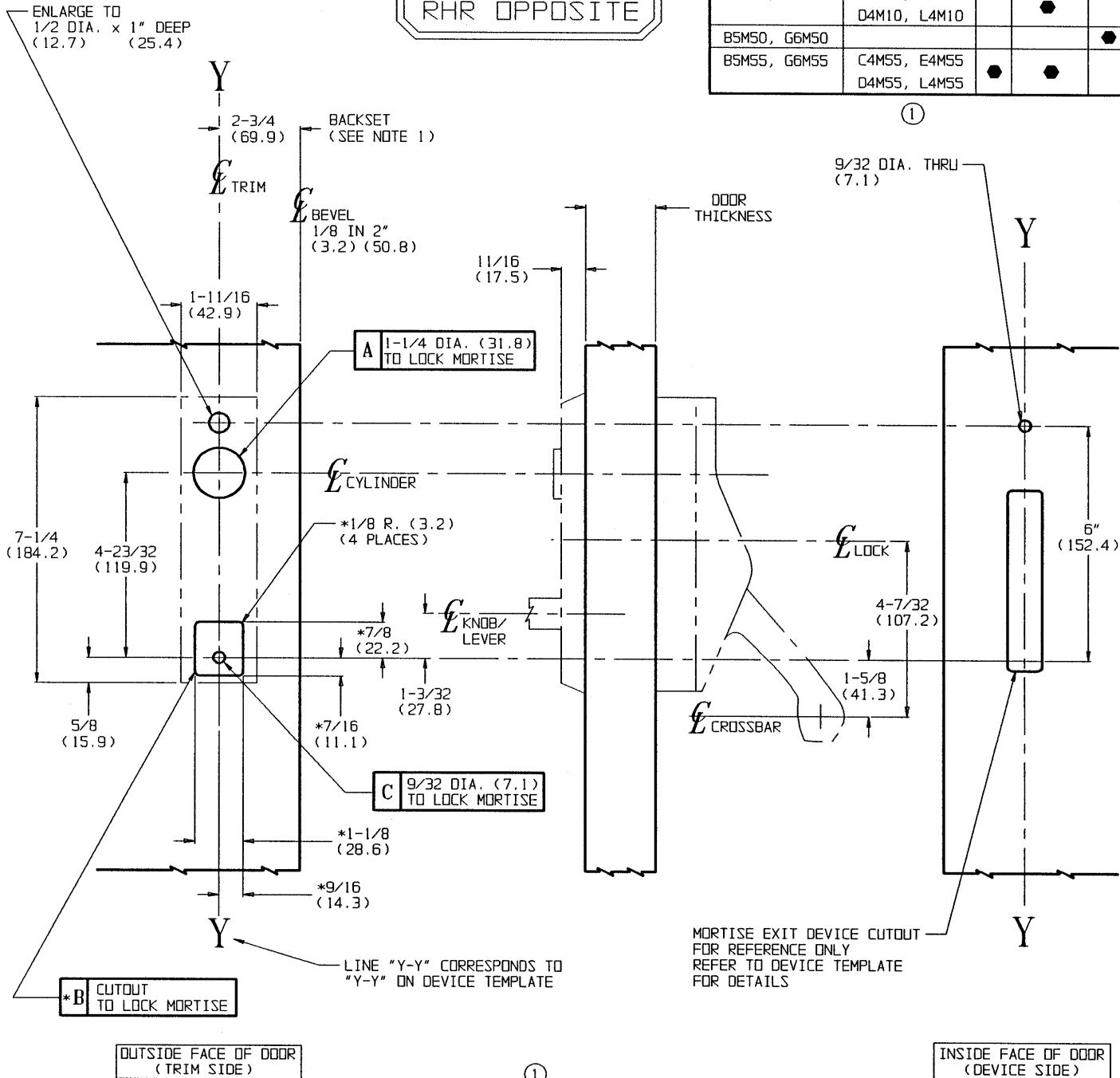
NOTES:

- BACKSET IS MEASURED FROM CENTERLINE OF BEVEL WHICH IS CENTERPOINT OF DOOR THICKNESS.
- DIMENSIONS GIVEN IN INCHES AND (MM).
- REFER TO CHART FOR SPECIAL HOLES REQUIRED BY TRIM FUNCTION.

TEMPLATE CROSS REFERENCE	
DESCRIPTION	TEMPLATE
ED7600 SERIES MORTISE DEVICE	T30578
MLE08, MLE09 MORTISE EXIT LOCK	T30610

LHR SHOWN
RHR OPPOSITE

TRIM		A	*B CUTOUT	C
KNOB	LEVER			
B5M10, G6M10	C4M10, E4M10 D4M10, L4M10		●	
B5M50, G6M50				●
B5M55, G6M55	C4M55, E4M55 D4M55, L4M55	●	●	



*B CUTOUT TO LOCK MORTISE

A 1-1/4 DIA. (31.8) TO LOCK MORTISE

C 9/32 DIA. (7.1) TO LOCK MORTISE

OUTSIDE FACE OF DOOR (TRIM SIDE)

INSIDE FACE OF DOOR (DEVICE SIDE)

RESPONSIBILITY

Door and Frame Manufacturers are responsible for providing adequate construction or reinforcements for proper installation of hardware shown. All architectural builders hardware must be installed on properly reinforced doors and frames, regardless of the type, material, or method of construction.

B5M10	C4M55	E4M55	L4M10
B5M50	D4M10	G6M10	L4M55
B5M55	D4M55	G6M50	
C4M10	E4M10	G6M55	

KNOB/LEVER ESCUTCHEON TRIM
CROSSBAR NARROW STILE
MORTISE DEVICE



DO NOT SCALE DRAWING			
SUPERSEDES	T30577	DR.	DLD
DATE	1-98	TEMPLATE NUMBER	T30577-1