

MOUNTING INFORMATION

- **For Non-Fire Rated Exit Devices:**
Sex nuts or through bolts **are recommended** for wood core, wood and plastic covered composite doors, and any type of door without reinforcements.
- **For Fire Rated Exit Devices:**
Sex nuts or through bolts **are required** for wood core, wood and plastic covered composite doors, and any type of door without reinforcements.

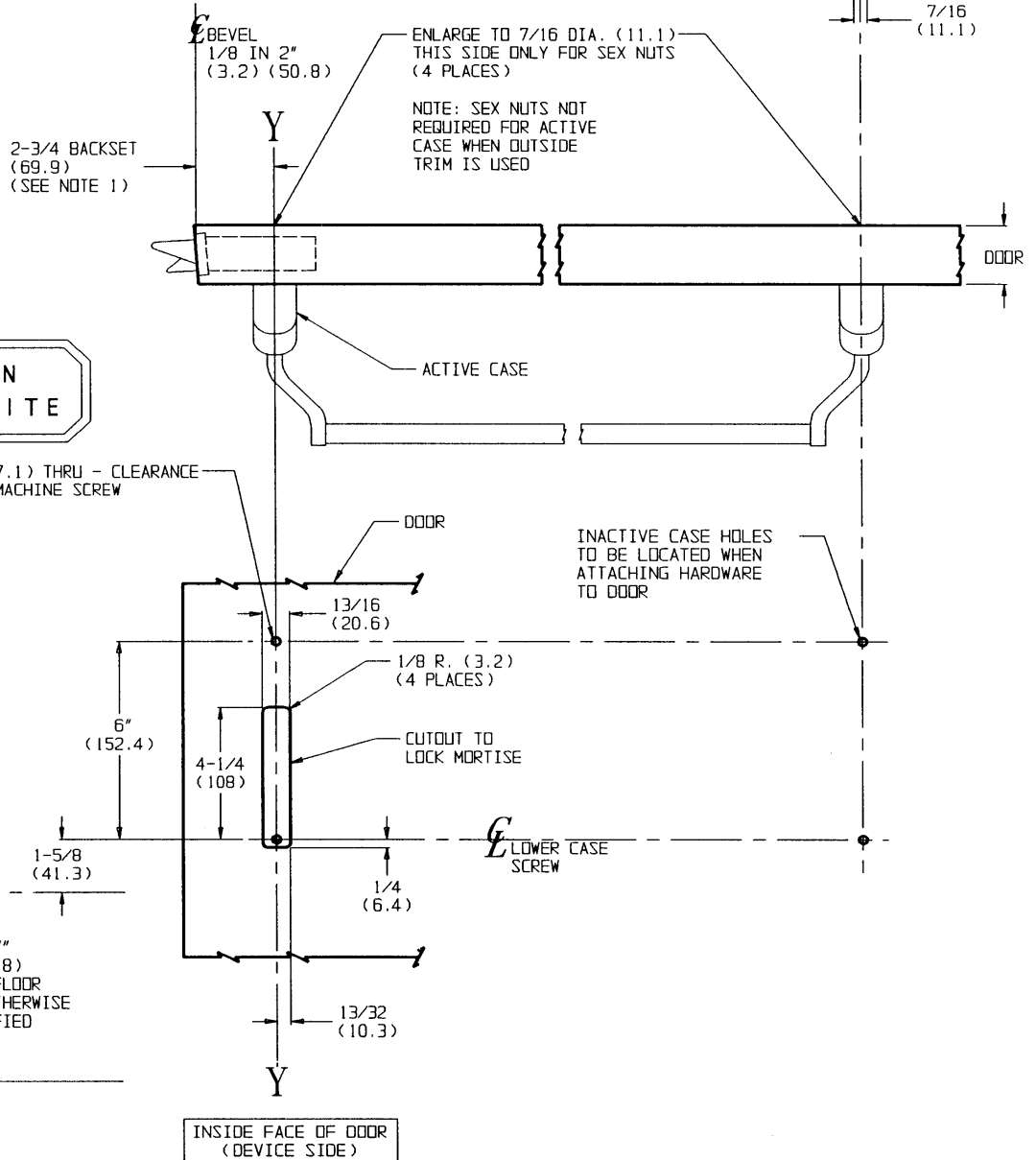
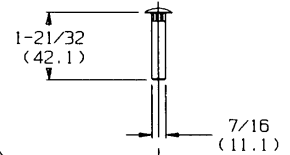
NOTES:

1. BACKSET IS MEASURED FROM CENTERLINE OF BEVEL WHICH IS CENTERPOINT OF DOOR THICKNESS.
2. RECOMMENDED MINIMUM STILE 5" (127).
3. REFER TO SEPARATE TEMPLATE FOR LOCK AND TRIM PREPARATION.
4. DIMENSIONS GIVEN IN INCHES AND (MM).

TEMPLATE CROSS REFERENCE

DESCRIPTION	TEMPLATE
MLE0B, MLE09 SERIES MORTISE EXIT LOCK	T30610
OPEN BACK STRIKE	T30606

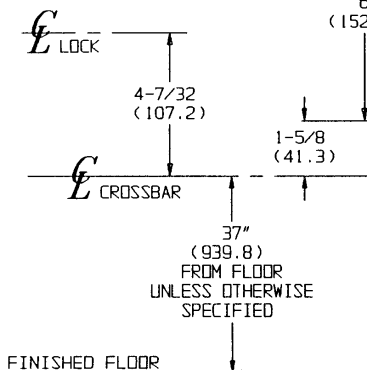
SEX NUT DETAIL



LHR SHOWN
RHR OPPOSITE

9/32 DIA. (7.1) THRU - CLEARANCE
FOR 1/4-20 MACHINE SCREW
(4 PLACES)

INACTIVE CASE HOLES
TO BE LOCATED WHEN
ATTACHING HARDWARE
TO DOOR



INSIDE FACE OF DOOR
(DEVICE SIDE)

RESPONSIBILITY

Door and Frame Manufacturers are responsible for providing adequate construction or reinforcements for proper installation of hardware shown. All architectural builders hardware must be installed on properly reinforced doors and frames, regardless of the type, material, or method of construction.

ED7600 SERIES
ED7600A SERIES

CROSSBAR NARROW STILE
MORTISE DEVICE

**Corbin
Russwin**
www.corbinrusswin.com

DO NOT SCALE DRAWING

SUPERSEDES V25688, 23180A	DR. BTH	APR. <i>[Signature]</i>
DATE 03/26/93	TEMPLATE NUMBER T30578	