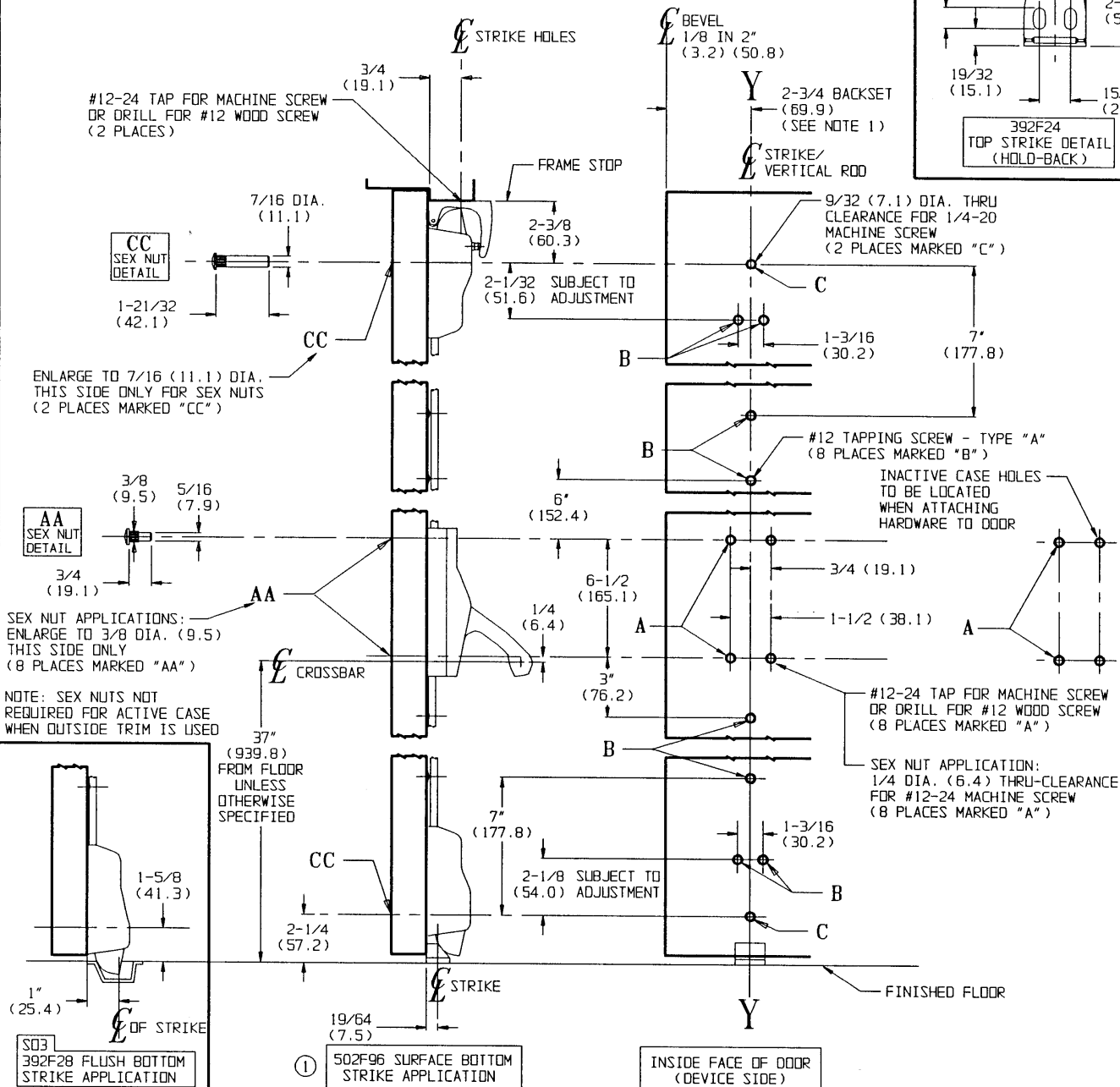
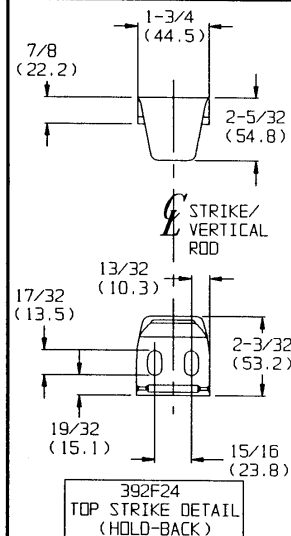


- **For Non-Fire Rated Exit Devices:**
Sex Nuts or through bolts
are recommended for wood core,
wood and plastic covered composite
doors, and any type of door without
reinforcements.

LHR SHOWN
RHR OPPOSITE

1. BACKSET IS MEASURED FROM CENTERLINE OF BEVEL WHICH IS CENTERPOINT OF OODR THICKNESS.
2. RECOMMENDED MINIMUM STILE 4-1/8 (104.8)
3. FOR PREPARATION OF TRIM, REFER TO SEPARATE TEMPLATE.
4. DIMENSIONS GIVEN IN INCHES AND (MM).
5. REFER TO TEMPLATE T30583 FOR DEVICE WITH OPTIONAL NON HOLD-BACK LATCH.



Door and Frame Manufacturers are responsible for providing adequate construction or reinforcements for proper installation of hardware shown. All architectural builders hardware must be installed on properly reinforced doors and frames, regardless of the type, material, or method of construction.

BY LATCH HOLD-BACK

**Corbin
Russwin**  TM
www.corbinrusswin.com

DO NOT SCALE DRAWING

SUPERSEDES

T30582

OR

11

DATE _____

2/1/94

TEMPLATE
 NUMBER

T30582-1