

MOUNTING INFORMATION

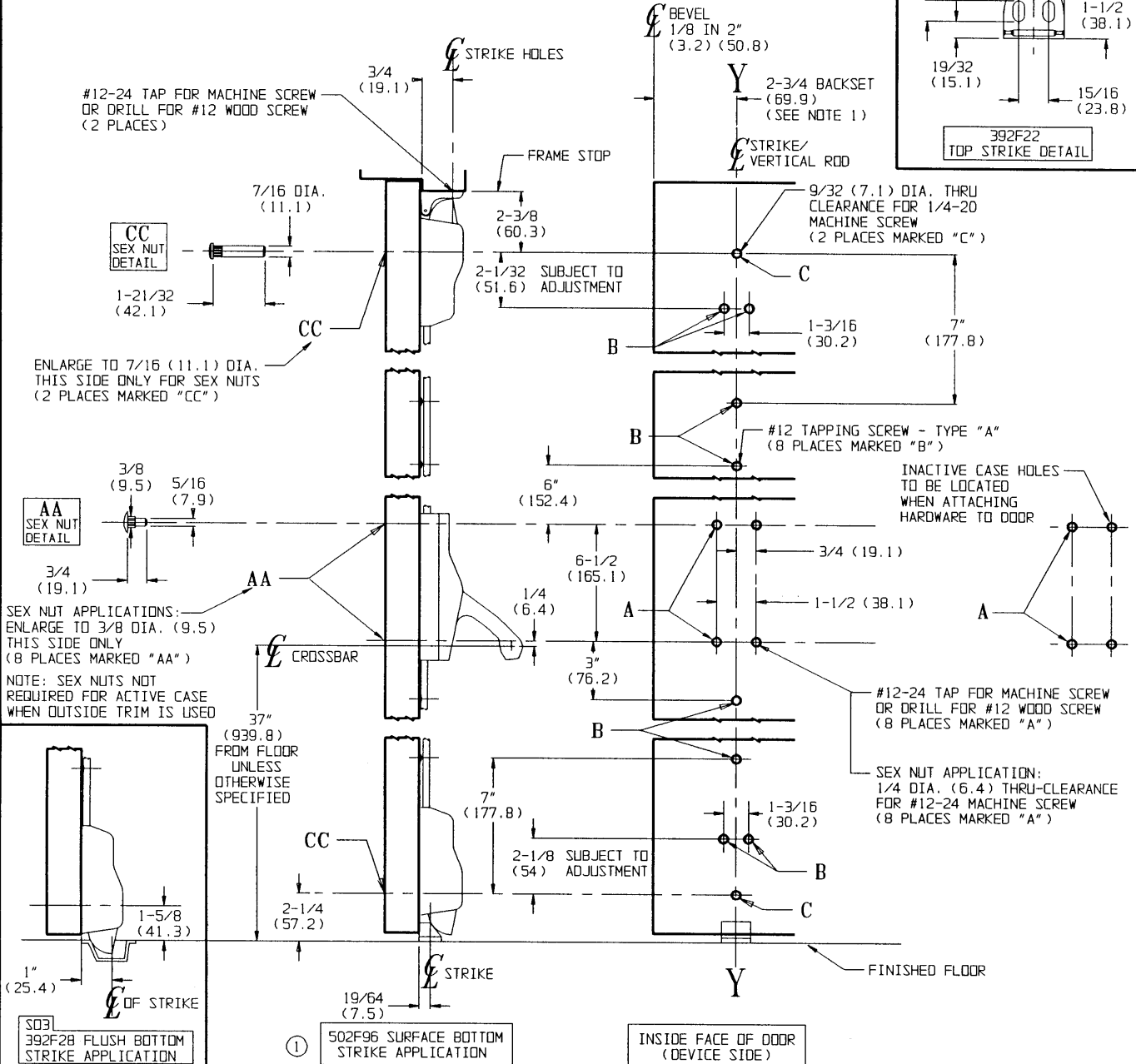
- For Non-Fire Rated Exit Devices:

Sex Nuts or through bolts
are recommended for wood core,
wood and plastic covered composite
doors, and any type of door without
reinforcements.

NOTES:

1. BACKSET IS MEASURED FROM CENTERLINE OF BEVEL WHICH IS CENTERPOINT OF DOOR THICKNESS.
2. RECOMMENDED MINIMUM STILE 4-1/8 (104.8)
3. FOR PREPARATION OF TRIM, REFER TO SEPARATE TEMPLATE.
4. DIMENSIONS GIVEN IN INCHES AND (MM).
5. REFER TO TEMPLATE T30582 FOR DEVICE WITH LATCH HOLD-BACK.

LHR SHOWN
RHR OPPOSITE



RESPONSIBILITY

Door and Frame Manufacturers are responsible for providing adequate construction or reinforcements for proper installation of hardware shown. All architectural builders hardware must be installed on properly reinforced doors and frames, regardless of the type, material, or method of construction.

ED6400 Series by M65

CROSSBAR VERTICAL ROD DEVICE

BY NON HOLD-BACK LATCH

**Corbin
Russwin**™
www.corbinrusswin.com

DO NOT SCALE DRAWING

SUPERSEDES T30583 DR. OLD
DATE 2/1/94 TEMPLATE NUMBER T30583-1