

NOTES:

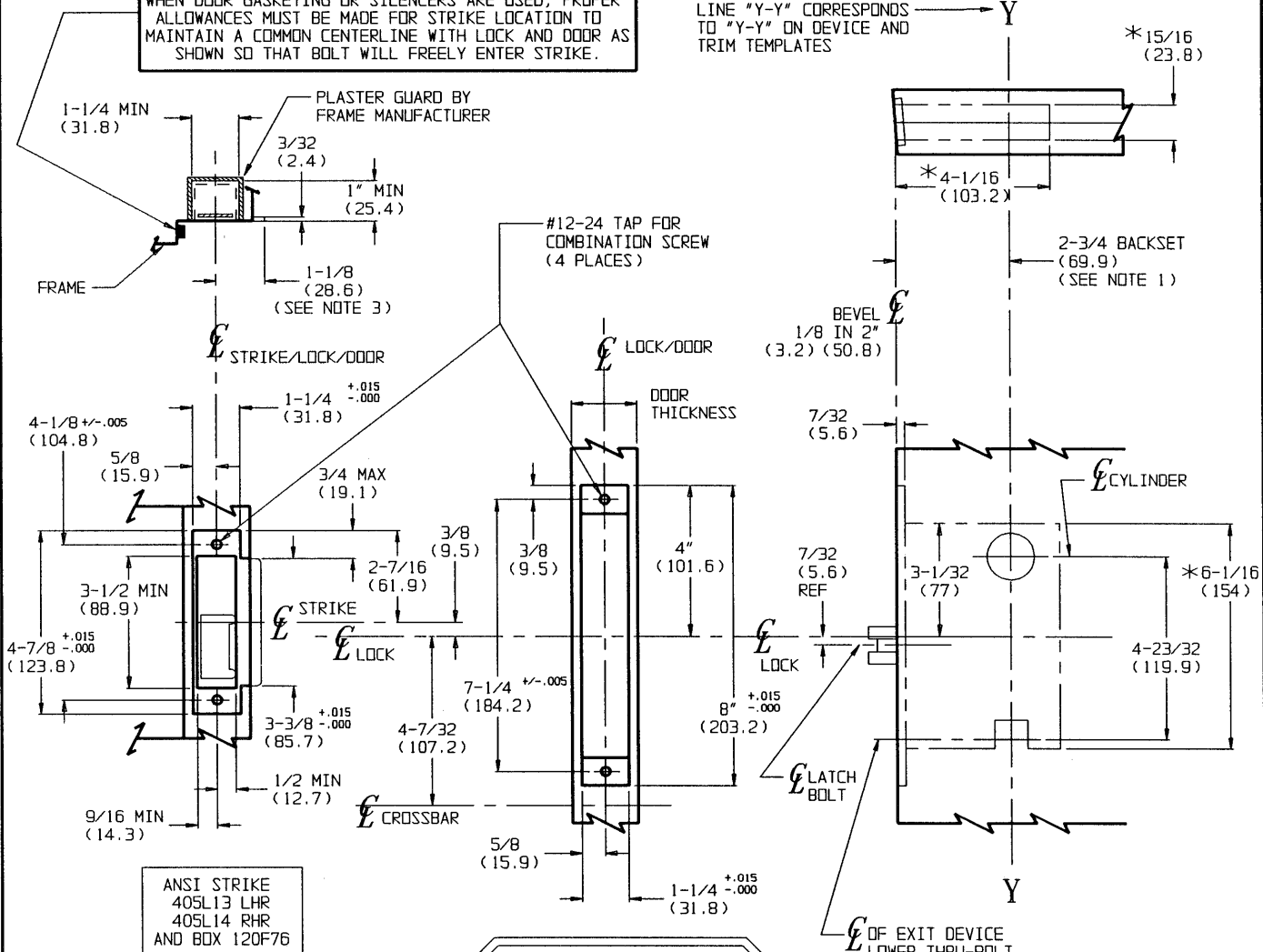
- BACKSET IS MEASURED FROM CENTERLINE OF BEVEL WHICH IS CENTERPOINT OF DOOR THICKNESS.
- WHEN PREPARING DOORS FOR LEAD WRAPPED LOCKS, ADD 1/8" (3.2) TO DIMENSIONS MARKED WITH ASTERISK TO ALLOW PROPER CLEARANCE.
- 1-1/8" (28.6) STRIKE LIP SUITS FRAME FOR 1-3/4" (44.5) THICK DOOR. LIP VARIES FOR OTHER DOOR THICKNESSES.
- DIMENSIONS GIVEN IN INCHES AND (MM).
- FOR PREPARATION OF TRIM, REFER TO SEPARATE TEMPLATE.

TEMPLATE CROSS REFERENCE

DESCRIPTION	TEMPLATE
ED7600 SERIES MORTISE DEVICE	T30578
OPEN BACK STRIKE	T30606

**CAUTION: DOOR AND FRAME MANUFACTURERS**

WHEN DOOR GASKETING OR SILENCERS ARE USED, PROPER ALLOWANCES MUST BE MADE FOR STRIKE LOCATION TO MAINTAIN A COMMON CENTERLINE WITH LOCK AND DOOR AS SHOWN SO THAT BOLT WILL FREELY ENTER STRIKE.



LHR SHOWN  
RHR OPPOSITE

INSIDE FACE OF DOOR  
(DEVICE SIDE)

TOLERANCES	
INCHES	(MM)
.005	(.127)
.015	(.381)

**RESPONSIBILITY**

Door and Frame Manufacturers are responsible for providing adequate construction or reinforcements for proper installation of hardware shown. All architectural builders hardware must be installed on properly reinforced doors and frames, regardless of the type, material, or method of construction.

MLE08 SERIES  
MLE09 SERIES

CROSSBAR NARROW STILE  
MORTISE EXIT LOCK



DO NOT SCALE DRAWING			
SUPERSEDES	VT30188	DR.	BTH
DATE	03/25/93	TEMPLATE NUMBER	T30610