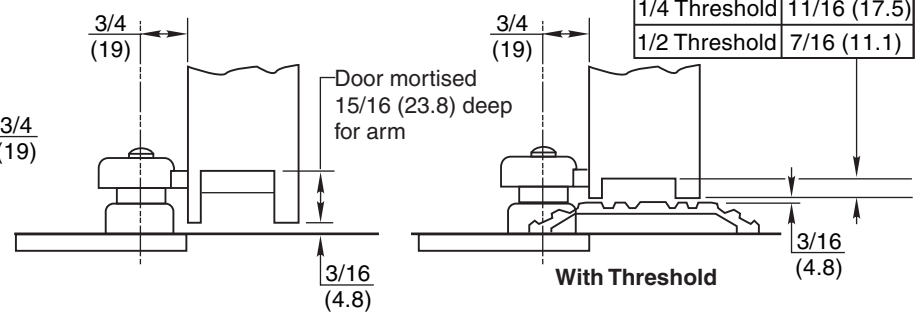
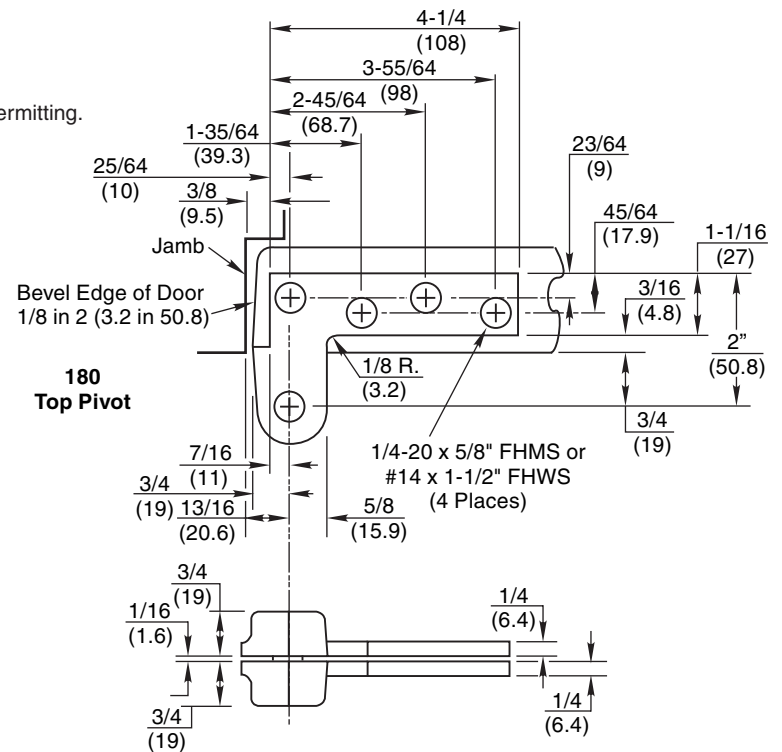
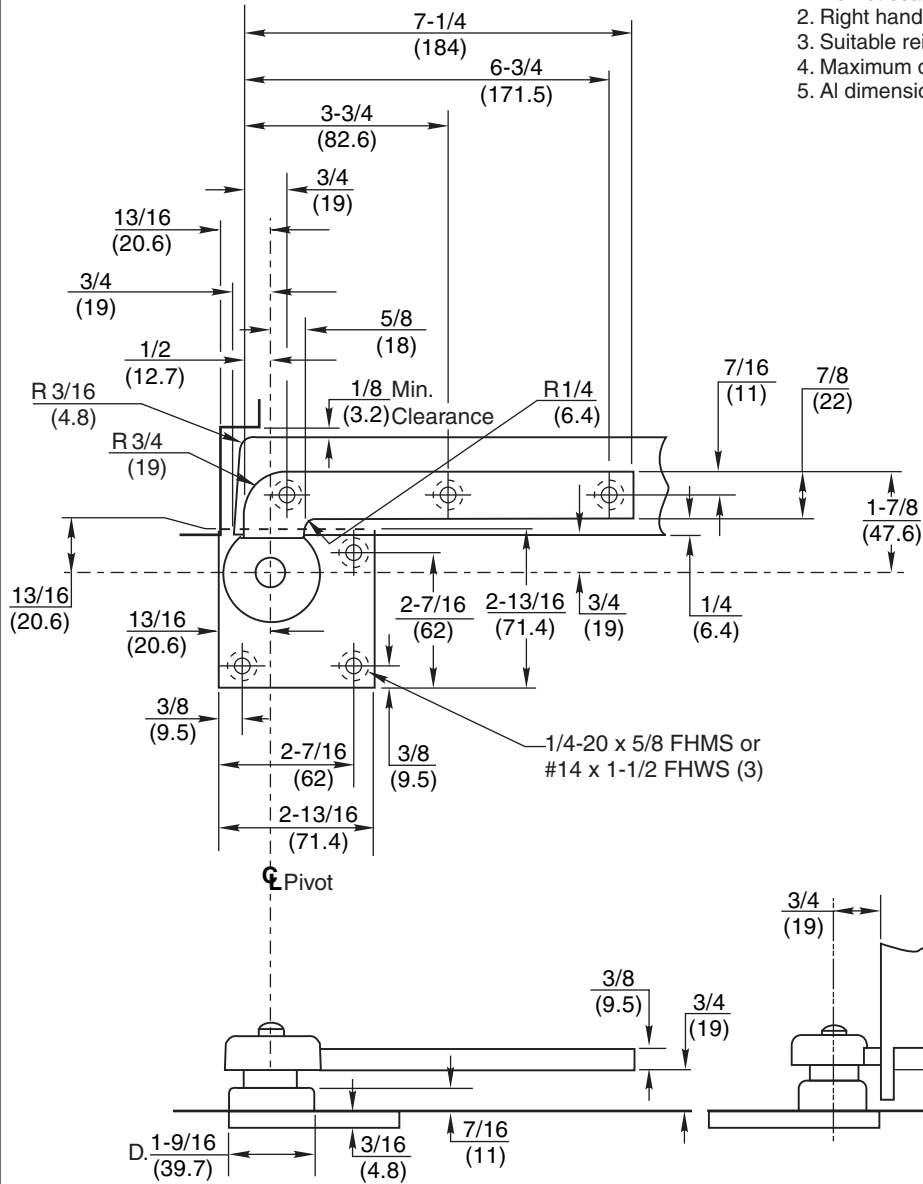


Notes:

1. Do not scale drawing.
2. Right hand shown.
3. Suitable reinforcing by others.
4. Maximum degree of opening 180°, trim permitting.
5. All dimensions are in inches(mm).



**F117/117 Pivot Set
 3/4" Offset**

Approved 2018-04-17

RIXSON®

ASSA ABLOY

www.rixson.com

TEMPLATE NUMBER	REV.	DATE
PS30005	3	04-18